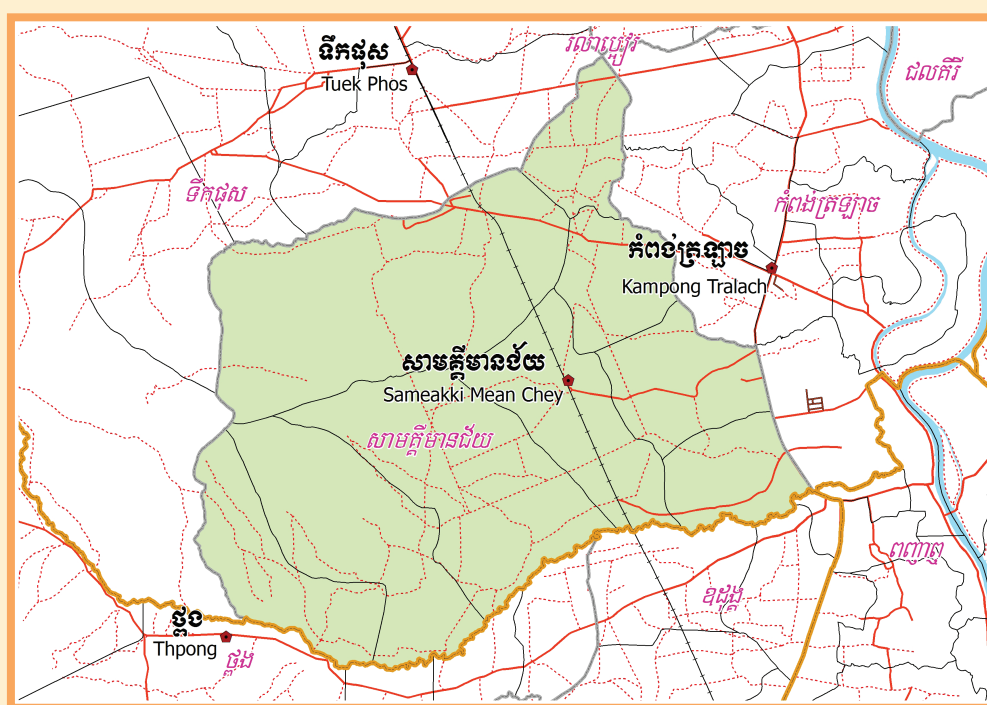


KINGDOM OF CAMBODIA
Nation Religion King



**National Committee for Sub-National
Democratic Development (NCDD)**



SAMEAKKI MEAN CHEY DISTRICT DATA BOOK 2009

District Code Nr: 407
Kampong Chhnang Province

October 2009

Sameakki Mean Chey District Data Book 2009

District Code Nr: 407

Kampong Chhnang Province

Table of Contents

List of Abbreviations	i
Glossary.....	ii
Preface	vi
Introduction	vii
SECTION A: GEOGRAPHY	1
1 Administration and Infrastructure.....	3
2 Land Use and Natural Resources.....	5
3 Geography	7
3.1 Land Area	7
3.2 Distances between Offices	7
SECTION B: DISTRICT PROFILE	9
1 General Information	11
1.1 Population of the District.....	11
1.2 Occupations	12
1.3 Property	14
2 Infrastructure and Economy.....	16
2.1 Roads in meters over 3 years.....	16
2.2 Sewerage Pipes in meters over 3 years.....	16
2.3 Drainage and Bridges	16
2.4 Services in the District	16
2.5 Agriculture.....	17
3 Social Aspects	28
3.1 Education	28
3.2 Health.....	34
3.3 Water and Sanitation	36
3.4 Vulnerable groups.....	40
3.5 Migration	42
4 Natural Resources and Environment (NRE).....	44
4.1 Families involved with NRE issues over 3 years	44
4.2 Percentage of Families involved with Natural Resource issues, by Commune, for 2008	44
4.3 Percentage Houses with access to Garbage collection and Families affected by environmental Pollution, by Commune, for 2008	44
4.4 Percentage Families using chemical Fertilizer and chemical Pesticides, by Commune, for 2008 ..	44
5 Administration and Security	45

5.1	Birth Registration across 3 years.....	45
5.2	Number of unregistered Infants born in 2008, by Commune	45
5.3	Registered criminal Cases over 3 years	45
5.4	Registered criminal Cases per 10,000 people, by Commune, for 2008.....	45
5.5	Number of registered Land Disputes, by Commune, in 2008	45
6	Gender	46
6.1	Registered Domestic Violence over 3 years.....	46
6.2	Percentage of registered cases of Families experiencing domestic Violence, by Commune, in 2008	46
6.3	Women's involvement over 3 years.....	46
6.4	Percentage of Female Participants in Civil Society and of 18-60 year women with uncertain Jobs, by Commune, in 2008	47
6.5	Female-headed Households over 3 years.....	47
6.6	Percentage female-headed Households and with Children of less than 5 years old, by Commune, in 2008	47
7	Indigenous People in the District	48
7.1	Ethnic Minorities in the District over 3 years.....	48
7.2	Other Minorities in the District over 3 years.....	48
	SECTION C: PLANS AND PROJECTS	49
8	Priorities and Plans	51
8.1	Priorities of Commune Councils for 2009 in the District by Sector	51
8.2	Temporary Agreements by Commune, for 2009	55
8.3	Outputs, estimated and actual costs of C/S Fund Projects between 2005 and 2008, by Commune	68
8.4	Total Expenditure on C/S Fund Projects by sector and commune between 2005 and 2008.....	69
8.5	Actual 2009 C/S Fund projects by Commune	70
9	District level Projects from 2006 to 2009	71
9.1	District Initiative Infrastructure Projects from 2006 to 2009	71
9.2	District Initiative Service Projects from 2006 to 2009	71
9.3	Inter Commune Council Projects in 2008 and 2009	72
9.4	Other Projects in 2008 and 2009	74
	SECTION D: SERVICES AND ORGANIZATIONS	75
10	Infrastructure.....	77
10.1	Length of and Expenditure on Roads in 2008, by District	77
10.2	Scale of and Expenditure on Irrigation in 2008, by District.....	77
10.3	Power Supply in 2008, by District	78
11	Health Facilities.....	79

11.1 Health Facilities in the Province, by Operational District.....	79
11.2 Health Facilities and Staff in the province, by Operational District.....	79
11.3 Deliveries in 2007 in the Province, by Operational District.....	81
12 Education	82
12.1 Schools, Classes, Students, Staff, for for all levels, for 2007/2008 by District.....	82
12.2 Characteristics of Schools and School Principals for 2007/2008 by Commune	82
12.3 Enrolment by Level of Education, 2006/2007 by Commune	83
12.4 Enrolment by Level of Education, 2007/2008 by Commune	83
12.5 Aspects of Enrolment for 2007/2008 by Commune.....	84
12.6 School Buildings for all schools in the District for 2007/2008, by Commune	84
12.7 Conditions of Classrooms and Existence of Separate School Office and Library, by Commune	85
12.8 Community Participation and Financing across all schools in the District for 2007/2008 by Commune	85
12.9 Percentage Student Flow Rates and Graduation by level 2006/2007, by Commune	86
13 Staff and Resources at the District	87
13.1 District Councilors elected in 2009	87
13.2 Committees of the Council.....	87
13.3 Board of Governors.....	88
13.4 Offices under Sala Krong, Sala Srok and Sala Khan	88
13.5 Municipality/District/Khan line offices.....	88
13.6 Properties and Equipment of District Administration	89
13.7 Registered Revenue of the District Administration in 2008	90
13.8 Services in the District	90
13.9 Civil Society Organizations active in the District.....	90
13.10 Private Sector Organizations.....	92
SECTION E: POVERTY DATA	93
14 Data on Poverty	95
14.1 Predicted Poverty Rates for 2009, by commune	95
14.2 Poverty data from survey.....	95

List of Abbreviations

#	Number
AGR	Agriculture
BR	Birth Registration
C. Pilot	Piloted Commune
C/S	Commune / Sangkat
CBO	Community-Based Organization
CDB	Commune Database
CDPD	Commune Development and Planning Database
CIP	Commune Investment plan
CLTS	Community Led-Total Sanitation
Comm.	Commune
Com Cov	Commune Covered
CPA	Complementary Package of Activities
CPS	Community Preschool
CCWC	Commune Committees for Women and Children
DANIDA	Danish International Development Agency
DDLG	Democratic Development and Local Governance Project (EC-UNDP)
DFID	Department For International Development (UK)
DIP	District Initiative Project
DIS	District Information System
District PDRD	District Office of Rural Development
District WP	District Work Plan
DIW	District Integration Workshop
DoLA	Department of Local Administration
Dr	Doctor
DWRM	District Office of Water Resource and Meterology
ECD	Early Childhood education (part of PE)
EMIS	Education Management Information System
Event IC	Celebration of International Days
FDH	Former District Hospital
GTZ	German Society for Technical Cooperation (Gesellschaft für Technische Zusammenarbeit GmbH)
Ha	Hectare
HC	Health Center
HC (NB)	Health Center (no building)
HH	Headed Household
HSI	Intervention for Health
HP	Health Post
HW	Hand Washing
ICC	Inter Commune Council
IFAD	International Fund for Agricultural Development
IND	Industry
Inter-commune	Inter-Commune Project Management Committee or Inter-commune project
IO	International Organization
LASED	Land Allocation for Socio-Economic Development
LGCR	Local Governance for Children's Rights
M&E	Monitoring and Evaluation
MA	Medical Assistant
MoEYS	Ministry of Education, Youth and Sports
MoH	Ministry of Health

MoP	Ministry of Planning
MPA	Minimum Package of Activities
MW1	Primary Midwives
MW2	Secondary Midwives
n/a	Not available
NCD	National Contracts Database
NCDD	National Committee for Sub-National Democratic Development
NGO	Non-Governmental Organization
NRML	Natural Resources Management and Livelihood
NU1	Primary Nurse
NU2	Secondary Nurse
OD	Operational District
ODF	Open Defecation Free
Ope. Costs	Operational Costs
Others	Other Staff
PBW	Public Works
PDoEYS	Provincial Department of Education, Youth and Sport
PDRD	Provincial Department of Rural Development
PDWRM	Provincial Department of Water Resource and Meteorology
PE	Parenting Education
PHAST	Participatory Hygiene and Sanitation Transformation
PHD	Provincial Health Department
PID	Project Information Database
PMC	Project Management Committee
Pop 04-05	Population Covered 2004 or 2005
PSDD	Project to Support Democratic Development through Decentralization and Deconcentration
RRD	Rural Road Development
RH	Referral Hospital
RILGP	Rural Investment and Local Governance Project
RPRP	Rural Poverty Reduction Program
RuLIP	Rural Livelihoods Improvement Program
SIDA	Swedish International Development Cooperation Agency
SPPA	Senior Provincial Program Advisor
TBA	Traditional Birth Attendant
UNDP	United Nations Development Project
UNICEF	United Nations Children's Fund
Vil	Village
Vil Cov	Village Covered
VIL-HC	Distance from Village to Health Center
WASH	Water, Sanitation and Hygiene
WRM	Water Resource and Meteorology

Glossary

C/S Fund: The Commune/Sangkat Fund is established and managed by the Government of Cambodia to provide financial support for development projects and administrative costs of Commune/Sangkat Councils. The amount is determined as a percentage of the National Budget (for 2009: 2.8% over the 2008 budget) and is expected to increase gradually over the years. The total 2009 budget under this fund is \$ 27,643,902 (of which \$ 19,272,170 is for Development Projects and \$ 8,371,731 for Administration). Under the Rural Investment and Local Governance Project the World Bank currently reimburses the costs of development projects if these meet the Bank's criteria.

CDB: the Commune Data Base is a national database, compiled by the Ministry of Planning, on the basis of detailed questionnaires, completed at village and commune level, which are then sent to the Departments of Planning for data entry. The most recent round of data collection took place at the end of 2008 (and is reflected in the District Data Books). Commune, District and Provincial Profiles can be generated from this database and should be available from provincial Departments of Planning.

CDPD: the Commune Development and Planning Database is a database maintained by Departments of Planning and Ministry of Planning, recording proposed activities as determined and prioritized by Commune and Sangkat Councils; the Temporary Agreements between these councils and supporting agencies, as decided at District Integration Workshops and details on projects that actually take place at commune, district and provincial levels.

CIP: The Commune Investment Plan is a rolling three-year plan, developed and decided by the Commune or Sangkat Council. It sets priorities and identifies the projects proposed for the years to come.

Commune and Sangkat (C/S): the Communes (in rural areas) and Sangkats (in urban areas) are the lowest and smallest units of local government. Councils are elected directly, once in five years, for the 1417 Communes and 204 Sangkats. In the C/S there are 14,119 villages, which have Village Chiefs, but don't constitute a formal level of local government.

DIP: the District Initiative Project is jointly supported by the MDLF (Multi-Donor Livelihood Facility (supporting the NRM&L Program)) and PSDD. In 2009 it covers 106 districts, 60% of the total in the country, with a budget of \$ 3.2 million. It is focused on capacity development in planning, democratic development, public competitive procurement, financial management and service delivery.

DIS: The District Information System is a national database maintained by NCDD, recording resources, staff, revenue, infrastructure and equipment available in the 193 Districts and Khans throughout the country. The last update took place in July 2009

District, Municipality and Khan constitutes the third level of Government in Cambodia. There are 159 rural Districts, 26 Municipalities and 8 Khans of Phnom Penh Capital. They all have Councils which were, for the first time, elected in May 2009, by the Commune/Sangkat Councilors. These councils have a mandate for 5 years.

DIW: District Integration Workshops are held between July and October, to bring Commune/Sangkat Councils, looking for support for their projects, together with the governmental and non-governmental agencies that may provide support.

ICC: Inter Communes Council projects are executed in 10 provinces under the Democratic and Decentralized Local Governance Project (DDLG). This five year project (2006-2010) is executed by Ministry of Interior and funded by the European Commission and UNDP. The project focuses on improving dialogue partnership and accountability; create a network of Commune Councils at the provincial and national level and support and contribute to local area development for poverty reduction. The work under the ICC component supports investments and services formulated through inter-commune dialogue and planning.

MEDiCAM: A non-profit and non-partisan membership organization for NGOs active in Cambodia's health sector. It is the primary networking agency for health-related NGOs

NCDD: the National Committee for sub-National Democratic Development is the inter-ministerial body charged with the implementation of the Organic Law (a key legislative document, adopted in 2008, outlining the envisaged decentralization). NCDD also channels substantial financial assistance by a number of Development Partners, to projects and programs at various levels. This amounted to over \$ 91 million in 2008. More information at: www.ncdd.gov.kh. This website also provides access to reports, manuals, legal documents, details on projects and more.

OD: the Operational Districts are the districts as defined and used by the Ministry of Health. These do not coincide with the 193 (Administrative) Districts and Khans, as used by all other RGC agencies. The Operational Districts are usually larger, and so there are 77 Operational Districts against 193 administrative Districts and Khans. However they do fit within the boundaries of administrative provinces.

PID: The Project Information Database is the database maintained by NCDD at national and sub national level, to follow all aspects of projects by Commune and Sangkat Councils, including the C/S Fund projects

Provincial Investment Fund (PIF)

The Provincial Investment Fund is allocated to all Provinces and Municipalities according to a population based formula. Part of the fund is earmarked for support to planning activities of the Provincial / Municipal Department of Planning; and to gender mainstreaming activities of the Provincial Department of Women's Affairs. The remaining "un-earmarked PIF" is allocated by PRDC to sectoral technical departments against established criteria and in response to proposals with prioritisation taking into account: priorities formulated by the CS Councils and aggregated by District into District Priority Activities Matrices (DPAM); alignment with national planning and poverty alleviation criteria, complementarity with other planned activities; and performance of the Department concerned in implementation of activities in previous years. With this provisional allocation, the Department then programs activities through the District Integration Process. Finally, the agreed activities, plus support costs amounting to no more than 25% of the total, are included in a sub-contract signed between PRDC and the Department, pursuant to the overall PSDD contract signed between NCDD and PRDC. Total budget has been around \$ 2 million per year.

Province: the 23 Provinces and Phnom Penh Capital City represent the 2nd layer of government. They vary in size, from very small, like Kep (approx. 36,000 people) and Pailin (approx. 70,000 people), or large but with small populations, like Mondulkiri (over 60,000 people), and Ratanakiri (over 153,000) to densely populated and large, like Kampong Cham (over 1.7 million people) and Kandal (approx. 1.4 Million people).

PSDD: the Project to Support Democratic Development through Decentralization and Deconcentration is funded by DFID (UK), SIDA (Sweden) and UNDP and runs from 2006 till the end of 2010 (including a one year extension). Annual budgets range from \$ 11 million to over \$ 18 million. The project provides core technical support to NCDD and to the provinces, financial support to the C/S Fund, District Initiative, Provincial Investment Fund and capacity building support through training, studies and advisory services.

RILGP: The Rural Investment and Local Governance Project is a World Bank funded project that provides substantial support to C/S Fund projects and to developing the required infrastructure, policies, systems and skills. It started in 2003 with a Loan for \$ 22 million for 2003-2007 and was then extended with a Grant of \$ 36 million for the period of 2007-2010. Discussions about a possible RILGP 2 are taking place between RGC and the World Bank.

RPRP: the Rural Poverty Reduction Project is a seven year project from 2004 till 2010, funded by IFAD and UNDP and implemented through the Ministry of Agriculture, Forestry and Fishery, supported by the Ministry of Interior and facilitated by NCDD. The project is active in the provinces Prey Veng and Svay Rieng and focuses on 120,600 households below poverty line. The objective is poverty reduction with the active participation of the poor through improved livelihoods, Strengthened capacity, Sustainable farming systems and natural resource management, new and/or rehabilitated infrastructure development, increase accessibly to technology, services and markets for their economic and social development.

RULIP: the Rural Livelihoods Improvement Project is implemented by the Ministry of Agriculture Forestry and Fisheries (MAFF)' Project Support Unit- PSU, with the NCDD playing the role of cooperating agency. Funded by IFAD and UNDP, the project will run till 2014. The target group consists of poor households who have little or even no land, few livestock or other assets and often many dependents. The main goal of the project is to directly or indirectly improve the livelihood systems, food security and incomes of a total of 33,900 rural poor, ethnic minority and female headed households in targeted village of Kratie, Preah Vihear and Ratanakiri provinces in a sustainable manner.

Seth Koma: The UNICEF funded Seth Koma program focuses on measurable action for children and women. During 2006 -2010 it is implemented in six provinces. Government and UNICEF pursue a set of inter-related goals, addressing critical stages of the life cycle of the child: a) Mothers have safe pregnancies and deliveries and healthy newborns; b) best possible start in life of infant; c) Children enter schools at the right age of six years; d) Children are protected from exploitation, abuse, violence, discrimination and other risks; and e) Youth and adolescents acquire life skills, express their views, participate in the decisions.

Preface

The Government of Cambodia attaches great importance to optimal use of scarce resources and to participatory planning and management at all levels. The Organic Law which was adopted in 2008 provides the legal context for further steps towards improving and decentralizing planning, management and monitoring, and towards greater accountability and transparency of institutions at sub-national levels.

The Government has established elected Councils at the sub-national levels, and we will progressively give them the responsibilities, together with the human and financial resources, to deliver a wide range of public services. They will be more democratic, more efficient, more transparent and accountable, better at addressing gender and other inequalities, and at fighting corruption. We recognize that development does not come from government alone; it needs the involvement of citizens, civil society and the private sector, and the new system will facilitate this.

A central element in this process is the availability of information on any aspect of development to all concerned parties. The newly elected Councillors at District and Khan level, line departments operating at these levels, but also NGOs, Development Partners, Commune Councillors and citizens throughout Cambodia need information on problems and requirements, resources and opportunities, services and agencies, plans and projects. They will need such information to better understand the present situation, set targets for the future, monitor progress, know what others are doing and to apply resources wisely and this is the reason the District Data books will be so valuable.

The District Data Books are a major step towards full transparency and towards informed planning and decision-making. They provide all available data at District, Khan, Commune and Sangkat level in easily accessible formats, in Khmer and English, through over 16,000 printed copies, CD-ROMs and the NCDD website.

This is the first time in Cambodia (and possibly in South East Asia) that such detailed information is made so widely available and NCDD should be commended for the hard work that has gone into this. We also thank the Ministry of Planning, which provided the detailed data of the Commune Data Base, the sectoral ministries and provincial authorities who contributed data and the Development Partners who provided financial support.

It is our sincere hope that the publication of the District Data Books will strengthen capacities, especially at district levels, for evidence-based development planning. We also hope that this information will deepen the understanding among Ministries, Provincial Authorities, Development Partners, NGOs and research agencies of the realities at commune and district levels.

We call upon all to use and distribute this information, complement or correct where appropriate and to contribute new data in the years to come.

Sar KHENG

Deputy Prime Minister, Minister of Interior and Chairman of NCDD

Introduction

Purpose

The purpose of the District Data Books is to bring together information on any aspect of life and development of Districts, Khans, Communes and Sangkat, together and make this widely available. The primary targets are the newly elected District Councilors, district level line departments, provincial agencies, Development Partners and NGOs operating at this level. They need detailed knowledge on current living conditions, natural resources, infrastructure, agriculture and other economic activities, current service levels, past and planned projects and available resources.

While much information exists on many of the above aspects, it is often hard to access that information and much is lost to reports, databases and statistics that are not widely shared. Data are often only available in one language and often out-of-date, and many reports cover only one sector or region.

We found that these problems are especially acute at the district level. Now that Districts are becoming a much more significant level of local government and development planning, there is an urgent need for wide-ranging data to be used for setting base-lines, planning and prioritizing, monitoring and learning.

Approach

We have attempted to identify and compile all available statistics, reports, maps and other data at district and/or commune level. From this we have selected information that is available for all or most districts, reasonably reliable and up-to-date, sufficiently detailed and of possible interest to development planners, decision makers, agencies and citizens.

The major sources of the information in these District Data Books are:

- a) The Commune Data Base information over the years 2006 to 2009 (the most recent data were collected late last 2008), as compiled by the Ministry of Planning
- b) Detailed information directly collected from the Ministry of Health, the Ministry of Education, Youth and Sports and (for maps) the Ministry of Land Management, Urban Planning and Construction
- c) The Project Information Database (PID) at NCDD (up-to-date)
- d) The Commune Development and Planning Database (CDPD) (up to date)
- e) The District Information System (DIS) (updated per Mid 2009)
- f) Direct data collection at provincial and district level on private sector, irrigation, roads, and electricity, through provincial agencies
- g) Medical data collected from MEDiCAM
- h) The ID Poor Project – for poverty data on a number of provinces and districts
- i) NCDD's work on predictive poverty rates
- j) Specific projects for outputs, plans and budgets (Seth Koma, RILGP, RPRP and ICC)

Limitations of the data

We are fully aware that the data we collected are not always complete, consistent or correct. While we have rejected information that was wrong or very incomplete, we decided not to aim for statistical and scientific perfection, but to include information that is useful, relevant

and comprehensive. We also accepted different sources for the same data as this may encourage discussion on the quality of the respective data.

We strongly encourage anyone who notes errors or incompleteness in these data to contact us and to share their data. We hope that the next round of producing such District Data Books can draw on wider sources and more complete data.

We encourage the District Administrations, who receive these data also in digital format, not only to use these for their planning and monitoring, but also to start correcting and updating these data and to share new data with NCDD for future use.

Contents

The information in the following pages is organized in five sections:

- a) **Geographical data:** this section provides maps on infrastructure and administration and on land use and natural resources management. These maps are also provided in large format to all Districts and Khans.
- b) **District Profile:** this presents wide ranging data, covering 2006 – 2009, at district and commune level, extracted from the Commune Data Base, but edited for better understanding.
- c) **Plans and Projects:** this section presents development priorities determined by Commune and Sangkat Councils, Temporary Agreements, outputs and expenditure of major projects at Commune and District level over 2006 – 2008 and plans and budgets for 2009.
- d) **Services and Organizations:** this section provides details on key infrastructure (roads, electricity, irrigation systems) and services in health and education at district and commune level. It also provides an inventory of resources at the District Administration, NGOs operating in the district and private sector agencies active in the district.
- e) **Poverty Data:** this section provides predicted poverty rates for 2009 for all districts and communes and detailed poverty data compiled and processed by the ID Poor project for those that have been covered by this project.

The future

It is our hope that this is the start of a longer-term process. We hope that a next edition of these District Data Books will offer more comprehensive, correct and up-to-date information. We hope that the District Administrations will not only start using this information, but also improve and update it. For this they are all provided with the full data set in digital format.

We invite agencies, projects and experts to send reports, statistics and maps that could be used for a next version to us and we invite all users of the District Data Books to inform us about errors, updates and inconsistencies. Please contact us through info@ncdd.gov.kh

We now invite you to browse through this data book. You may open this randomly or use the table of contents and go to the aspects that have your special interest.

We hope that you will be informed, surprised and assisted. We hope, above all, that this information will lead to a deeper understanding of causes and effects of poverty, to purposeful decisions on how to tackle those causes and to greater transparency in using scarce resources for the benefit of all.

Martin de Graaf
Program Advisor, PSDD/NCD

SECTION A: GEOGRAPHY

1 Administration and Infrastructure

Please see separate folder containing A3 maps.

2 Land Use and Natural Resources

Please see separate folder containing A3 maps.

3 Geography

3.1 Land Area

Total Land Area (ha)	Forest Land Area (ha)		Cultivation Land Area (ha)	Construction Land Area (ha)	Other Land Area (ha)
	Total	Flooded Forest Area			
71426	40496	0	24010	3690	3230

3.2 Distances between Offices

Location	Distance (Km)
From District Office to C/S Office of Chhean Laeung	38
From District Office to C/S Office of Khna Chhmar	14
From District Office to C/S Office of Krang Lvea	10
From District Office to C/S Office of Peam	31
From District Office to C/S Office of Sedthei	13
From District Office to C/S Office of Svay	21
From District Office to C/S Office of Svay Chuk	23
From District Office to C/S Office of Tbaeng Khpos	11
From District Office to C/S Office of Thlok Vien	10

SECTION B: DISTRICT PROFILE¹

¹ All data in this section come from the Commune Database (CDB) unless otherwise specified. These include primarily new CDB data, collected late 2008, and some data from earlier years. Please note that percentages are rounded to the nearest whole number.

1 General Information

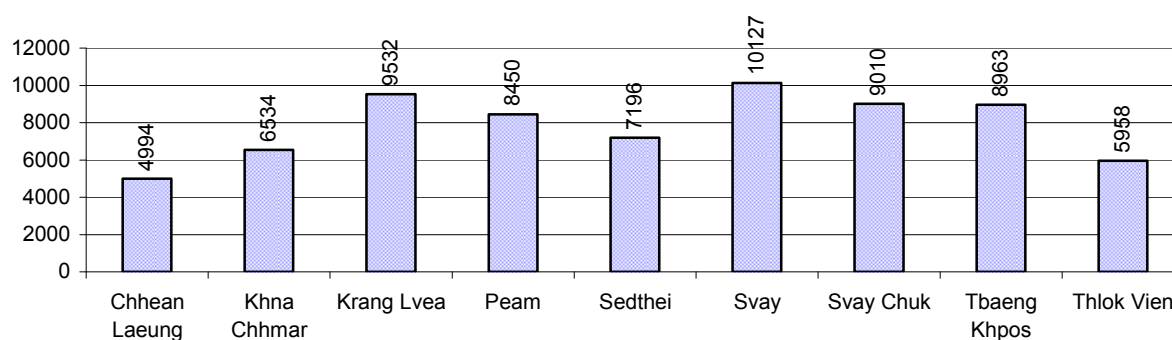
1.1 Population of the District

1.1.1 Total Population

Number of families	2005	2006	2007	2008
Total number of families	13,373 families	13,678 families	13,900 families	14,346 families
Increase (+)/Decrease (-) in nr of families		2%	2%	3%
Total population	67,317 pers	68,453 pers	70,224 pers	70,764 pers
Increase (+)/Decrease (-) in nr of people		2%	3%	1%
Number of female Headed Households (HH)	2,627 families	2,626 families	2,754 families	2,654 families

Note: Percentages of population and increase/decrease are calculated on basis of the previous year. A negative sign in front of the percentage indicates a decrease in population.

1.1.2 Population, by Commune, in 2008



1.1.3 Population, by Age Group, over 3 years

Population by age group	2006	2007	2008	
	%	%	%	Number
Age 0-5 years (as percentage of the population)	14%	14%	14%	10,257 persons
Male 0-5 yrs	51%	50%	51%	5,185 persons
Female 0-5 yrs	49%	50%	49%	5,072 persons
Age 6-17 (as percentage of the population)	32%	31%	31%	21,691 persons
Male 6-17 yrs	50%	50%	50%	10,938 persons
Female 6-17 yrs	50%	50%	50%	10,753 persons
Age 18-60 (as percentage of the population)	48%	49%	48%	34,231 persons
Male 18-60 yrs	47%	47%	47%	16,180 persons
Female 18-60 yrs	53%	53%	53%	18,051 persons
Age 61 above (as percentage of the population)	6%	6%	6%	4,585 persons
Male 61	41%	42%	44%	2,028 persons
Female 61	59%	58%	56%	2,557 persons

Note: The overall percentage for each age group is calculated on the basis of the total population. The gender distribution of each group is calculated on the basis of the population within that particular age group.

1.2 Occupations

1.2.1 Percentage of families with a particular Occupation over 3 years

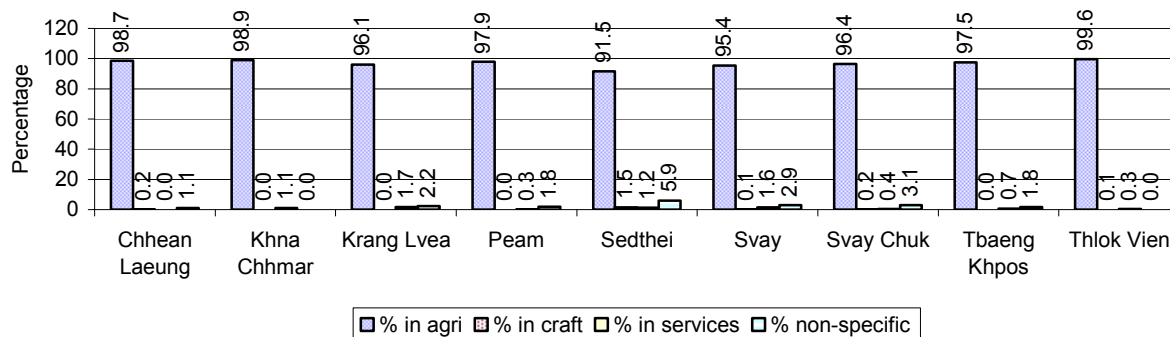
This table shows the percentage of the population who have a particular occupation (job), for example the percentage of the population in the district who are rice farmers, furniture crafter, trader, etc.

Description	2006	2007	2008	
	%	%	%	Number
Families whose main occupation is agriculture	99%	98%	97%	13,871 Families
Families whose primary occupation is rice farming	96%	96%	95%	13,661 Families
Families whose primary occupation is cultivating long-term crops	0%	0%	0%	22 Families
Families whose primary occupation is cultivating short-term crops	2%	2%	1%	100 Families
Families whose primary occupation is cultivating vegetable	0%	0%	0%	57 Families
Families whose primary occupation is fisherman	0%	0%	0%	6 Families
Families whose primary occupation is livestock farmer	0%	0%	0%	19 Families
Families whose primary occupation is NTFP collection	0%	0%	0%	6 Families
Families whose main occupation is craft work	0%	0%	0%	30 Families
Families, whose main occupation is in furniture craft, wooden, rattan, vine, bamboo	0%	0%	0%	8 Families
Families whose main occupation is in metal, aluminum, glass goods production	0%	0%	0%	2 Families
Families whose main occupation is food production	0%	0%	0%	2 Families
Families whose main occupation is tire, plastics and rubber goods production	0%	0%	0%	0 Families
Families whose main occupation is textile, clothing goods production	0%	0%	0%	1 Families
Families whose main occupation is in other production, not listed above	0%	0%	0%	17 Families
Families whose main occupation is services	1%	1%	1%	125 Families
Families whose main occupation is trade	0%	0%	0%	65 Families
Families whose main occupation is repair	0%	0%	0%	26 Families
Families whose main occupation is providing transport services	0%	0%	0%	23 Families
Families whose main occupation is providing other services	0%	0%	0%	11 Families
Families whose main occupation is not clear (or multi)	0%	1%	2%	320 Families

Note: The occupation percentages are calculated on the basis of the total number of families.

1.2.2 Percentage Families that work in one of four occupational sectors, by Commune in 2008

This table indicates the percentage of families involved in one of four occupation types: agriculture, craft, services or non-specific (other). Please note agriculture includes forestry activities such as cutting down trees and gathering gum from the trees.



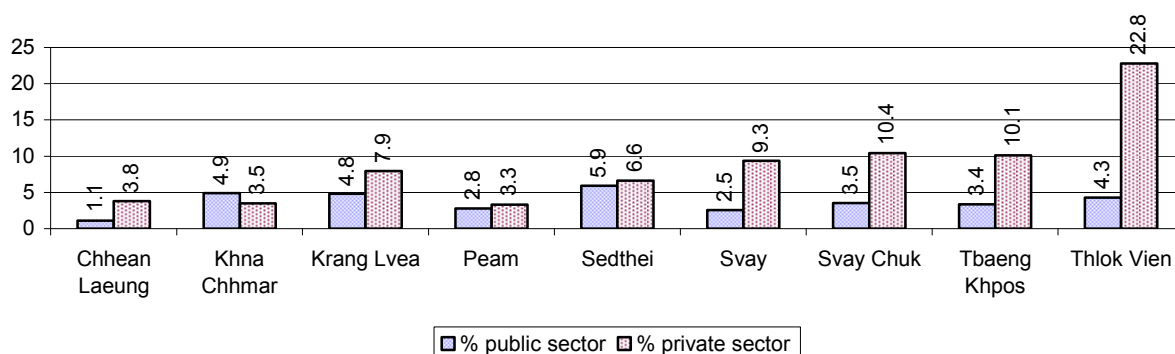
Note: Calculated on the basis of the total number of families within a commune.

1.2.3 Percentage of Families with public Sector, private Sector or uncertain Jobs, over 3 years

Description	2006	2007	2008	
	%	%	%	Number
Families that have a family member who is a government official, staff or worker	6%	3%	4%	535 families
Families that have a family member who is a private sector staff or worker	5%	11%	9%	1,232 families
Number of people aged 18-60 with uncertain/irregular jobs	6%	10%	2%	654 persons

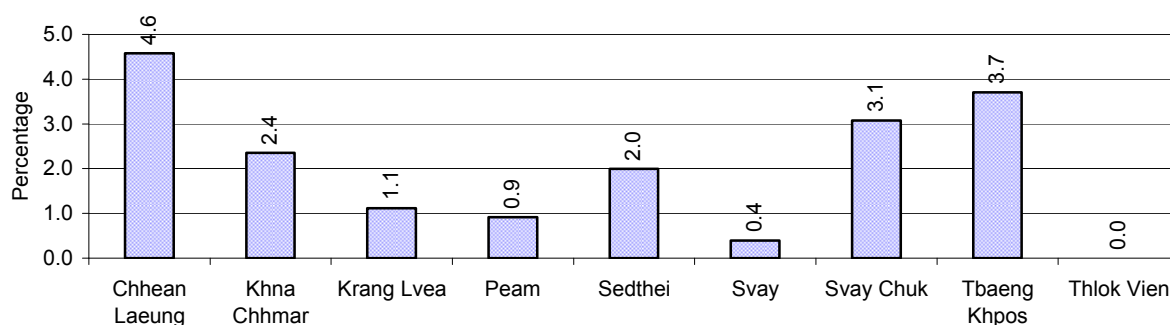
Note: In the first two rows percentages are calculated on the basis of the total number of families. In the third row the percentage is calculated on the basis of the total number of people aged 18-60 years.

1.2.4 Percentage of Families with public or private Sector Jobs, by Commune in 2008



Note: Calculated on the basis of the total number of families in the commune

1.2.5 Percentage of People aged 18-60 years with uncertain/irregular Jobs, by Commune, in 2008.



1.3 Property

1.3.1 Housing types and facilities over 3 years

This table shows the percentage of people living in a certain type of house. It also indicates how many houses have electricity or battery powered lights and how many have TV.

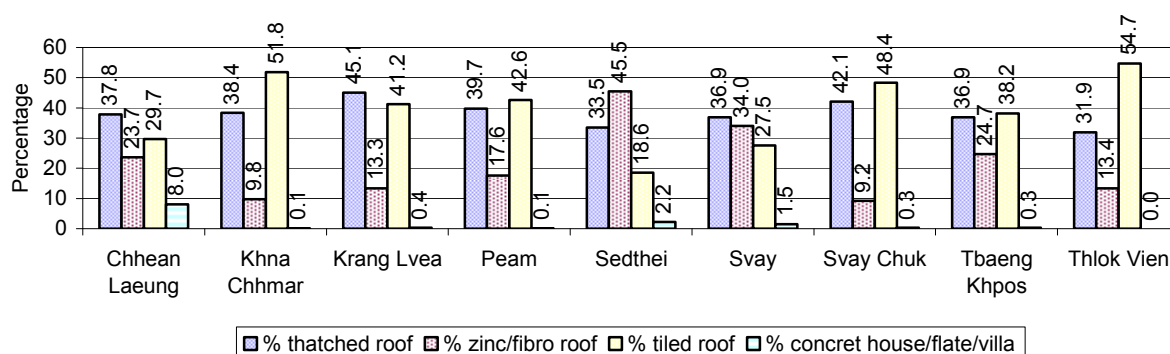
House Type	2006 %	2007 %	2008	
			%	Number
House with thatched roof	46 %	42 %	38 %	5,411 houses
House with zinc/fibro roof	17 %	20 %	21 %	3,001 houses
House with tiled roof	37 %	37 %	39 %	5,492 houses
Flats/apartments (with many families living)	0 %	1 %	1 %	127 houses
Concrete house or flat (with one family living)	0 %	0 %	0 %	48 houses
Villa house	0 %	0 %	0 %	7 houses
Houses with electricity	0 %	0 %	1 %	71 houses
Houses with battery light	43 %	51 %	58 %	8,211 houses
Houses with TV	34 %	41 %	46 %	6,436 houses

Note: Calculated against the total number of houses

1.3.2 Families living on public Land or without a permanent House

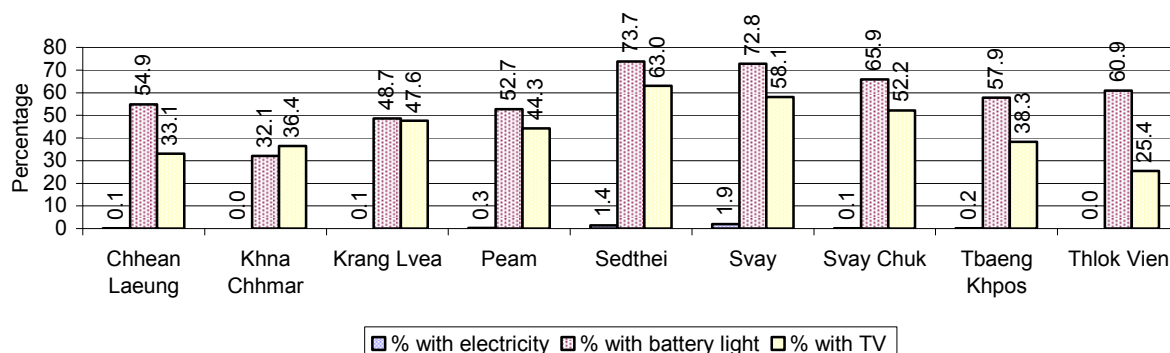
Living situation	2006	2007	2008
Families living in a house on public land	158 families	179 families	107 families
People, without permanent housing	14 person(s)	16 person(s)	32 person(s)

1.3.3 Percentage of Population living in a particular type of House, by Commune, in 2008



Note: Calculated against the total number of houses in each commune

1.3.4 Percentage of Houses with Electricity, Battery Lights and/or TVs, by Commune, in 2008



Note: Calculated against the total number of houses in each commune

1.3.5 Types of Vehicles and their ratio to Families across 3 years

This table shows the number of families per vehicle in the district. The last column shows the total number of each type of vehicle in the district for 2008.

Description	2006 ratio	2007 ratio	2008	
			Ratio	Number
Bicycle and bicycle with trailer	2	2	1	10,059
Ox-carts and horse-carts	1	1	1	10,788
Motorbike/with trailer	5	4	3	4,546
Motor tri-cycle	2,736	13,900	7,173	2
Large Transportation				
Total number of cars/trucks	91	59	66	217
Locally made vehicles	1,052	1,390	1,594	9
Trucks for goods transport	138	108	97	148
Buses/mini buses for passengers	1,954	2,317	1,104	13
Family cars	441	156	305	47
Agriculture machinery				
Tractors used for plowing	4,559	13,900	4,782	3
Power-tillage used for plowing	76	46	35	413
Other type of machinery				
Other type of machinery	N/A	1,544	1,594	9
Water transportation				
Row boats	13,678	N/A	N/A	0
Total number of motor boats				
Motor boats used for fishing	N/A	N/A	N/A	0
Motor boats used for passengers	N/A	N/A	N/A	0
Motor boats used for goods transporting	N/A	N/A	N/A	0

Note: Ratio of families to a particular type of vehicle is the result of the total number of families divided by total number of that type of vehicle. Other types of vehicles, such as bulldozer, excavator, rollers etc. are not listed.

2 Infrastructure and Economy

2.1 Roads in meters over 3 years

Description	2006	2007	2008
Bituminous road	4,000 m	0 m	0 m
DBST, Macadam road	2,500 m	0 m	0 m
Concrete road	0 m	0 m	0 m
Laterite road	149,462 m	69,335 m	127,913 m
Constructed earth road	63,250 m	55,660 m	210,260 m
Un-constructed earth road	56,300 m	39,929 m	43,464 m

2.2 Sewerage Pipes in meters over 3 years

Description	Sewage pipe length		
	2006	2007	2008
Total length of sewage pipe, diameter 30-50 cm	100 m	64 m	64 m
Length of newly constructed sewage pipe, diameter 30-50 cm	0 m	7 m	7 m
Length of sewage pipe, diameter 30-50 cm needs repair/rehabilitation	0 m	0 m	0 m
Total length of sewage pipe, diameter of pipe 60-100 cm	786 m	407 m	1,013 m
Length of newly constructed sewage pipe, diameter 60-100 cm	123 m	6 m	119 m
Length of sewage pipe, diameter 60-100 cm needs repair/rehabilitation	16 m	0 m	16 m
Sewage pipe, diameter of pipe over 100 cm	50 m	124 m	41 m
Length of newly constructed sewage pipe, diameter over 100 cm	0 m	1 m	1 m
Length of sewage pipe, diameter over 100 cm needs repair/rehabilitation	0 m	0 m	0 m

2.3 Drainage and Bridges

Construction Type	2006		2007		2008	
	place(s)	Length	place(s)	Length	place(s)	Length
Single pipe culvert	128	451m	85	244 m	113	427 m
Double-pipe culvert	16	58m	13	32 m	24	110 m
Box pipe culvert	11	30m	29	24m	31	110 m
Wooden bridge	11	161m	10	157m	12	207 m
Concrete bridge	19	225m	20	202m	24	274 m
Bale bridge	4	56m	2	50m	5	163 m
Spillway construction	0	0m	2	10m	3	160 m

2.4 Services in the District

Descriptions	Number of places by year		
	2006	2007	2008
Public			
Electricity generating stations	0	5	5
Health clinics	0	0	0
Private			
Bicycle and motorcycle repair places	38	44	49
Agricultural machinery, tools and equipment repair places	4	4	5
Electronic tool repair places	7	7	6
Battery-charging services	42	54	59
Handicraft places, wooden furniture and forest by-products	20	19	24
Other handicraft places (excluding furniture)	7	7	7

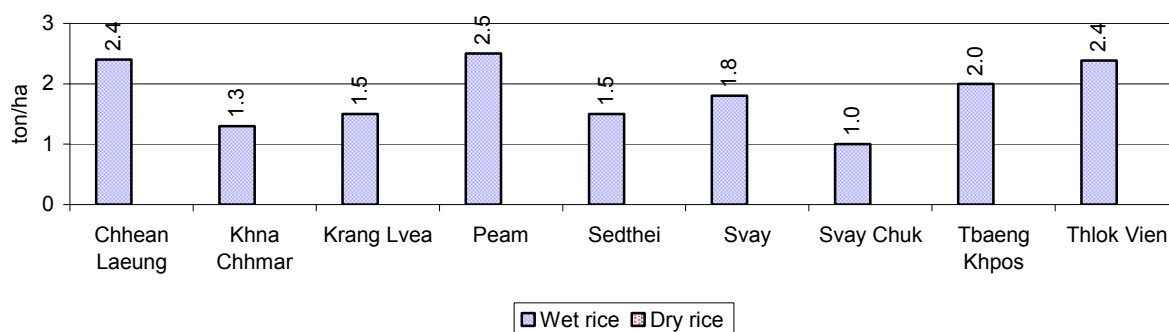
Descriptions	Number of places by year		
	2006	2007	2008
Small-scale services (hairstresser, phone service, massage, Karaoke, etc)	47	50	62
Small-scale food shop businesses (Food, groceries, drink shop, etc)	24	41	86
Small-scale rice mills	462	497	464
Medium or large-scale rice mills	4	4	4
Small-scale markets	2	3	3
Large-scale market	0	0	0
Alcohol refinery places	18	34	36
Pharmacies and small drug stores	0	0	0
Hotels	0	0	0
Guest houses	0	0	0
Restaurants	0	0	0
Gasoline stations	0	0	0

2.5 Agriculture

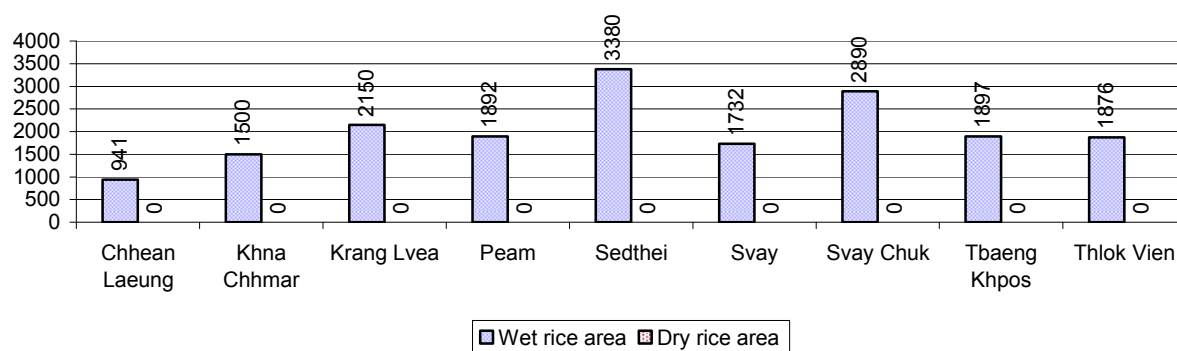
2.5.1 Rice cultivation in the District over 3 years

Description	2006	2007	2008
Total dry rice land area	0 ha	0 ha	0 ha
Actual dry rice cultivation area	0 ha	0 ha	0 ha
% actual cultivation to total land	-%	-%	-%
Total dry rice production	- tonne(s)	- tonne(s)	- tonne(s)
Average dry rice yield	- tonne(s)/ha	- tonne(s)/ha	- tonne(s)/ha
Total wet rice land area	21,463 ha	21,686 ha	21,541 ha
Actual wet rice cultivation area	18,062 ha	18,046 ha	18,258 ha
% actual cultivation to total land	84 %	83%	85%
Total wet rice production	25,326.94 tonne(s)	25,103.99 tonne(s)	33,239.70 tonne(s)
Average wet rice yield	1.4 tonne(s)/ha	1.4 tonne(s)/ha	1.8 tonne(s)/ha
Total intensive rice land area	3,380 ha	3,000 ha	0 ha
Actual intensive rice cultivation area	3,568 ha	360 ha	- ha
Average intensive rice yield	1.1 tonne(s)/ha	0.1 tonne(s)/ha	- tonne(s)/ha
Actual upland rice cultivation area	77 ha	73 ha	0 ha
Total upland rice production	135 tonne(s)	98 tonne(s)	- tonne(s)
Average upland rice yield	1.8 tonne(s)/ha	1.4 tonne(s)/ha	- tonne(s)/ha

2.5.2 Estimated wet and dry Season Rice Yield in tonne(s)/Ha, by Commune, in 2008



2.5.3 Cultivated wet and dry Season Rice areas in Ha, by Commune, in 2008



2.5.4 Estimated intensive Rice Yields in tonnes/Ha, by Commune, for 2008

There were no estimated intensive rice yields in this District in 2008

2.5.5 Estimated upland Rice Yield in tonnes/Ha, by Commune, for 2008

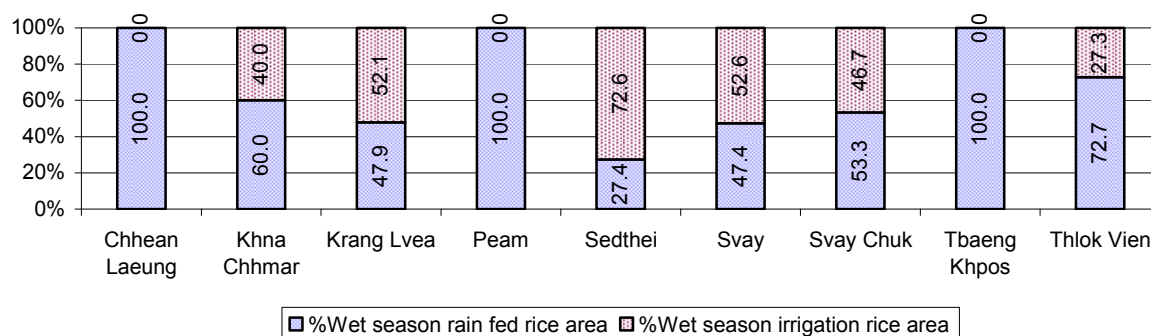
There were no estimated upland rice yields in this District in 2008

2.5.6 Wet season Rice irrigation across 3 years

Description		2006	2007	2008	
		%	%	%	Number
Total area of wet season rain fed rice land		65%	55%	62 %	11,311 ha
Percentage of wet season rice land that is irrigated; and for 2008 area in Ha		35 %	45 %	38 %	6,947 ha
Where	Area irrigated from canal/dam	94 %	48 %	48 %	3,368 ha
	Area irrigated from river, stream, lake, natural pond	6 %	35 %	33 %	2,293 ha
	Area irrigated from drilled well	0 %	16 %	19 %	1,287 ha
	Area irrigated from dug pond	0 %	0 %	0 %	0 ha

2.5.7 Water sources for wet Season Rice Cultivation, by Commune, in 2008

This chart shows the percentage of wet season rice cultivation receiving water from rain (natural) and from irrigation.



2.5.8 Access to Irrigation

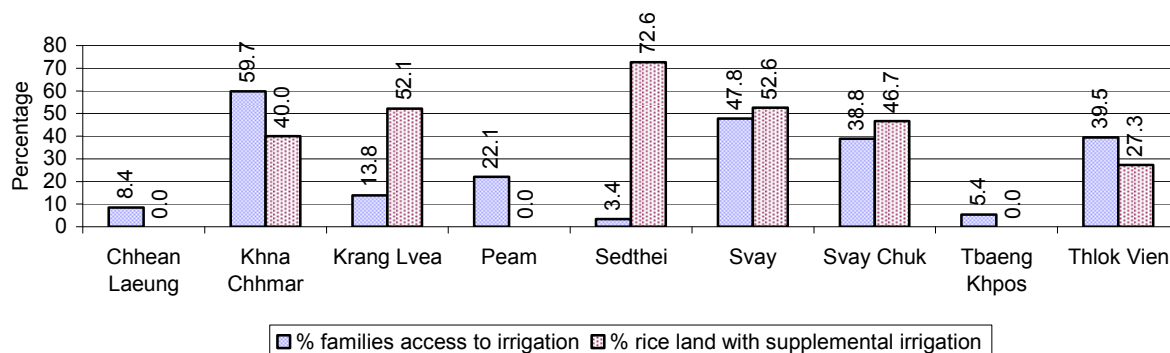
Description	2006 %	2007 %	2008	
			%	Number
Families who have access to irrigation water	24%	26%	27%	3,733 families
Families who have irrigation wells	0%	1%	1%	99 families

Note: Calculated against the total number of families are rice farmers

2.5.9 Number of Irrigation Wells over 3 years

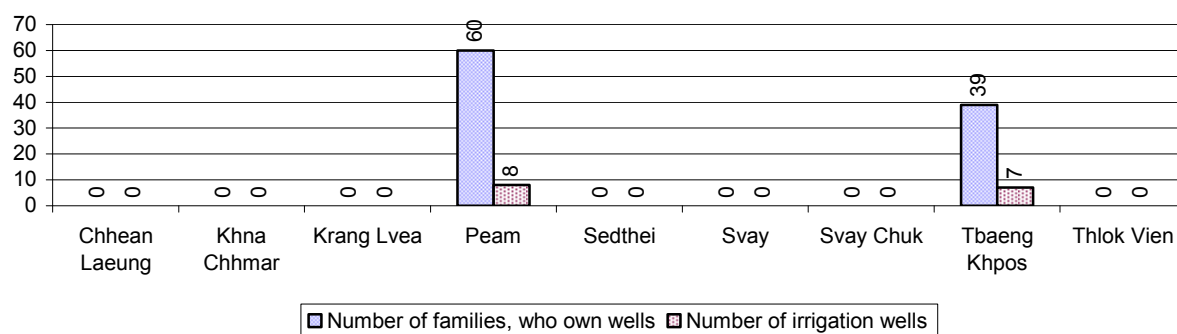
Description	2006	2007	2008
Number of irrigation wells	5 wells	12 wells	15 wells

2.5.10 Percentage of Families with access to (supplemental) Irrigation for wet Season Rice cultivation, by Commune, in 2008



Note: % of families, with access to irrigation is calculated against the total number of families, whose main occupation is rice farming. Irrigated wet rice land area is calculated against the total actual wet rice land cultivated areas

2.5.11 Irrigation Wells, by Commune, in 2008

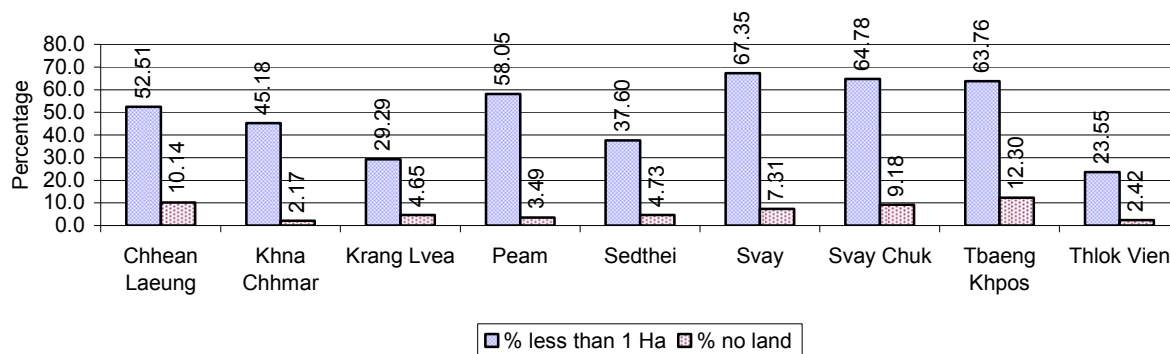


2.5.12 Farmers owning less than one hectare of Rice Land

Description	2006 %	2007 %	2008	
			%	Number
Families who have less than one hectare of rice land	46%	47%	51%	6,941 families
Families who do not own any rice land	6%	5%	6%	875 families

Note: Calculated on basis of total number of families who are rice farming

2.5.13 Percentage of Farmers with less than one Hectare or no Rice Land, by Commune, in 2008

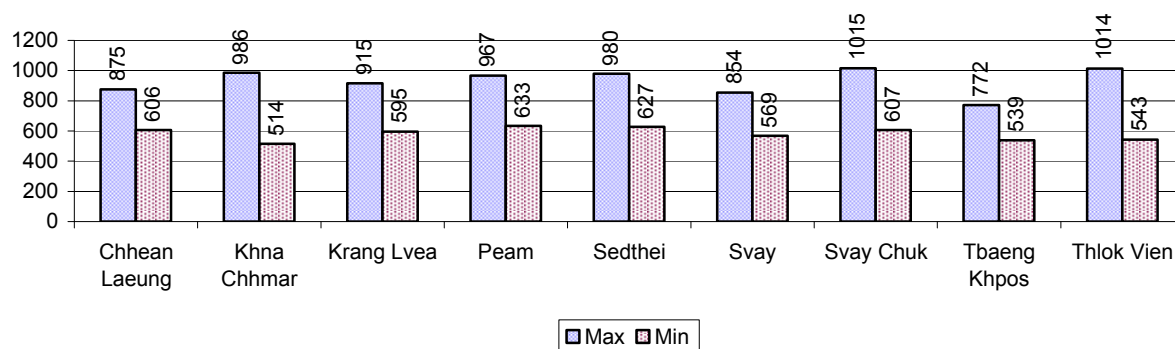


Note: Calculated on basis of total number of families who are rice farming

2.5.14 Average farm-gate Prices of Rice, over 3 years

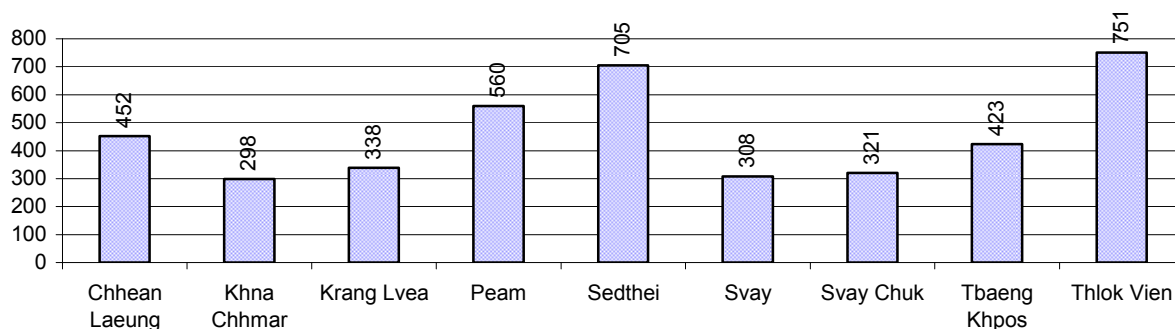
Description	2006	2007	2008
Maximum average farm gate price	612 Riels/Kg	789 Riels/Kg	931 Riels/Kg
Minimum average farm gate price	453 Riels/Kg	563 Riels/Kg	582 Riels/Kg
Average farm gate price	532 Riels/Kg	676 Riels/Kg	756 Riels/Kg
Average rice production per person	424 Kg/person	364 Kg/person	470 Kg/person

2.5.15 Minimum and maximum farm-gate Prices of Rice in Riel/kg, by Commune, in 2008



2.5.16 Production of Paddy in Kgs/Person, by Commune, in 2008

This table shows how much paddy (harvested rice) is produced in a year in a commune, in kgs per person.

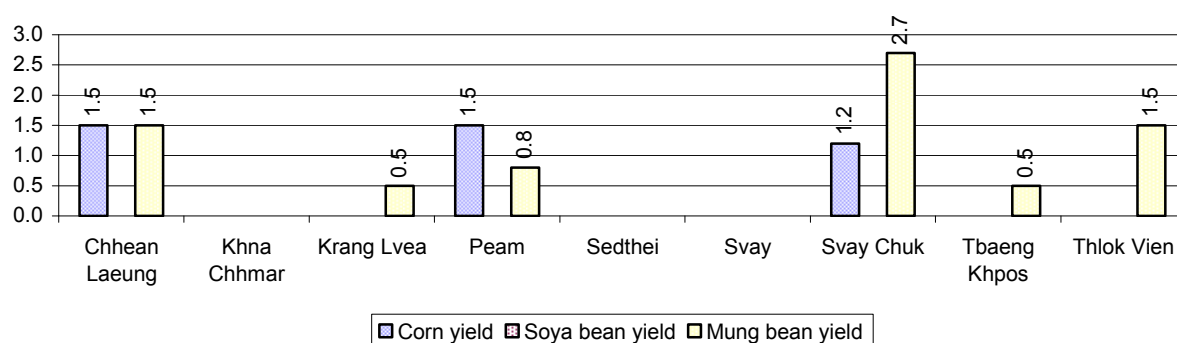


2.5.17 Production of other Crops, over 3 years

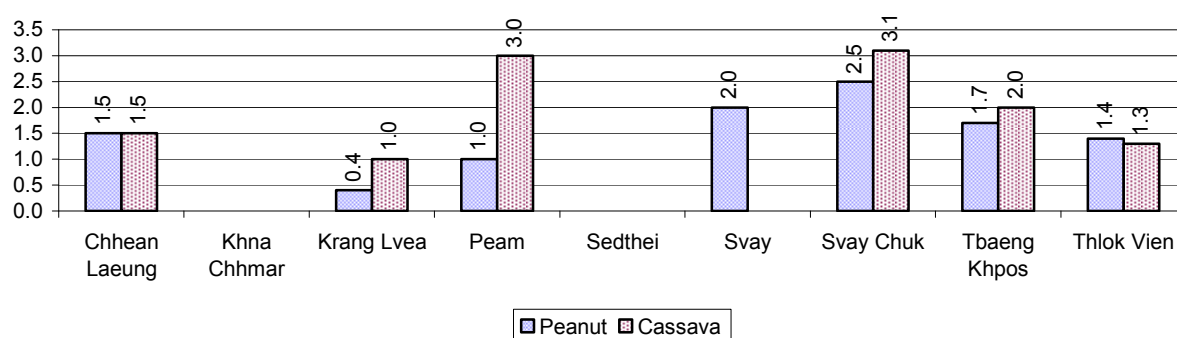
Crops	2006	2007	2008
Corn cultivation area	11 ha	394 ha	25 ha
Estimated corn yield	2.4 tonne(s)/ha	1.4 tonne(s)/ha	1.4 tonne(s)/ha
Estimated corn production	27 tonne(s)	551 tonne(s)	35 tonne(s)
Soya bean cultivation area	10 ha	0 ha	0 ha
Estimated Soya bean yield	2.0 tonne(s)/ha	- tonne(s)/ha	- tonne(s)/ha
Estimated Soya bean production	20 tonne(s)	- tonne(s)	- tonne(s)
Mungbean cultivation area	833 ha	1,022 ha	138 ha
Estimated Mungbean yield	1.2 tonne(s)/ha	1.1 tonne(s)/ha	1.3 tonne(s)/ha
Estimated Mungbean production	979 tonne(s)	1,107 tonne(s)	173 tonne(s)
Peanut cultivation area	249 ha	995 ha	609 ha
Estimated Peanut yield	1.7 tonne(s)/ha	1.4 tonne(s)/ha	1.5 tonne(s)/ha
Estimated Peanut production	431 tonne(s)	1,350 tonne(s)	913 tonne(s)
Cassava cultivation area	78 ha	232 ha	48 ha
Estimated Cassava yield	2.7 tonne(s)/ha	1.6 tonne(s)/ha	2.0 tonne(s)/ha
Estimated Cassava production	211 tonne(s)	379 tonne(s)	95 tonne(s)
Sweet potatoes cultivation area	43 ha	171 ha	22 ha
Estimated Sweet potatoes yield	2.0 tonne(s)/ha	1.7 tonne(s)/ha	1.8 tonne(s)/ha
Estimated Sweet potatoes	87 tonne(s)	281 tonne(s)	39 tonne(s)

Crops	2006	2007	2008
production			
Sesame cultivation area	11 ha	18 ha	0 ha
Estimated Sesame yield	1.6 tonne(s)/ha	1.0 tonne(s)/ha	- tonne(s)/ha
Estimated Sesame production	17 tonne(s)	18 tonne(s)	- tonne(s)

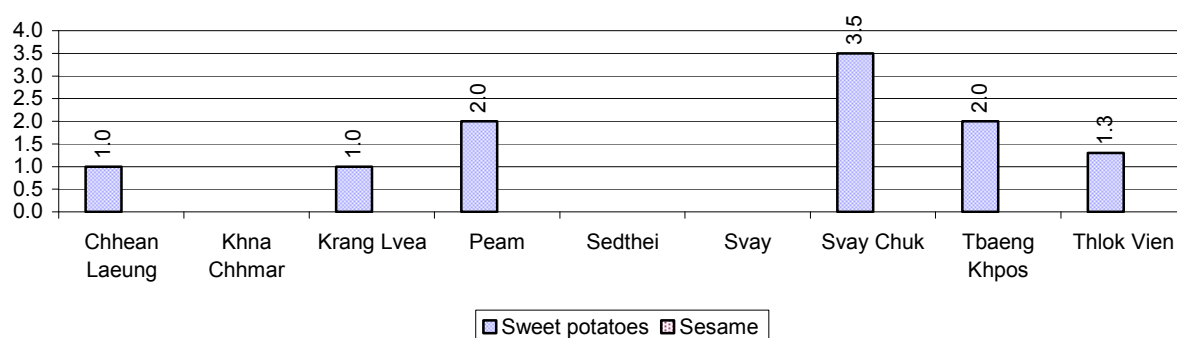
2.5.18 Yields of Corn, Soya beans and Mungbeans in tonne(s)/ha, by Commune, in 2008



2.5.19 Yields of Peanuts and Cassava in tonne(s)/ha by Commune, in 2008



2.5.20 Yields of Sweet Potatoes and Sesame in tonne(s)/ha, by Commune, in 2008



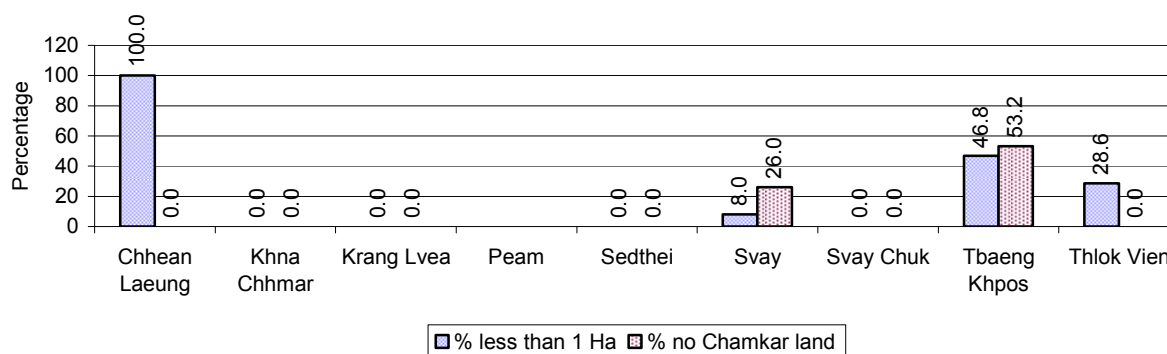
2.5.21 Percentage Farmers who own less than 1 Ha or no Chamkar land

Description	2006 %	2007 %	2008	
			%	Number
Families, who own less than 1ha of Chamkar land	2%	8%	21%	37 families
Families, with no Chamkar land	10%	2%	26%	46 families

Note 1: Calculated as a percentage of the total number of families whose main occupation is Chamkar (not rice) farming

Note 2: Chamkar land is no-rice land, i.e. other crops

2.5.22 Percentage Farmers owning less than 1 ha or no Chamkar land, by Commune, in 2008



Note: Percentage is calculated among families, who Chamkar farm as a main occupation, not the total population of the commune.

2.5.23 Percentage of Families raising Cattle/Buffalo, over 3 years

Description	2006 %	2007 %	2008	
			%	Number
Families raising cattle/buffalo	86%	87%	86%	12,388 families
Families raising cattle/buffalo as labor forces	77%	78%	75%	10,770 families

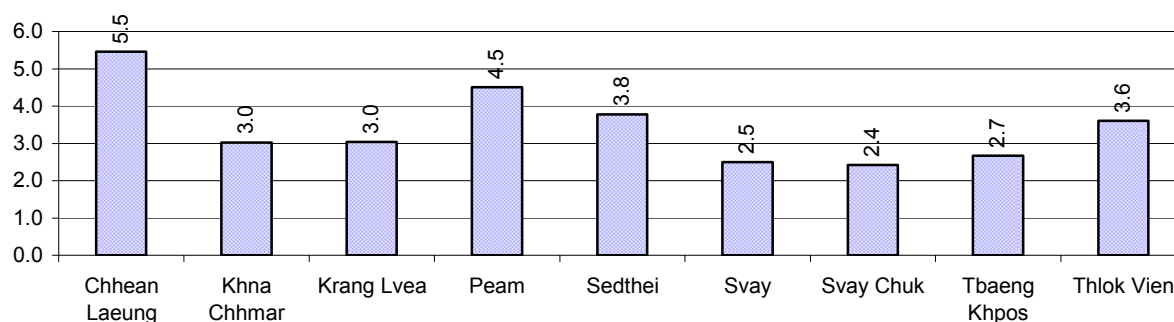
Note: Calculated against the total number of families.

2.5.24 Number of Cattle/buffalo being raised, over 3 years

Description	2006	2007	2008
Total number of cattle/buffalo	37,922 head(s)	40,773 head(s)	40,960 head(s)
Average cattle/buffalo per families	3.2 head(s)/families	3.4 head(s)/families	3 head(s)/families

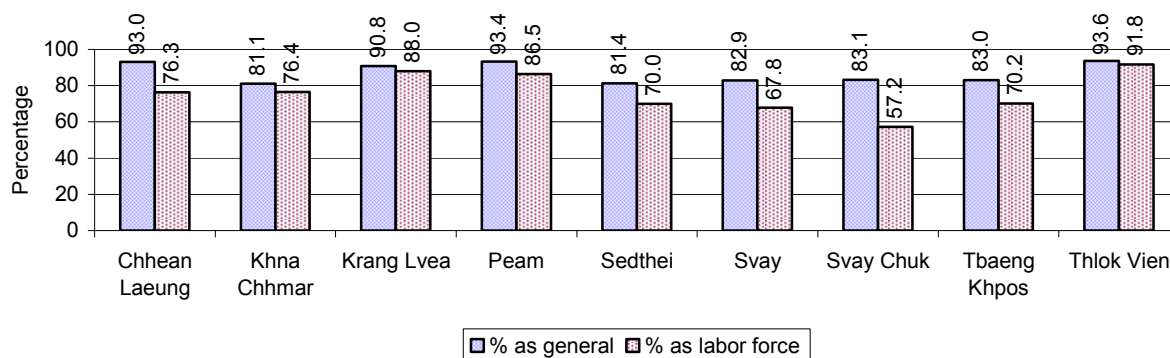
Note: Calculated by dividing total number of cattle/buffalo by total number of cattle/buffalo raising families

2.5.25 Average number of Cattle/Buffalo per Family, by Commune, in 2008



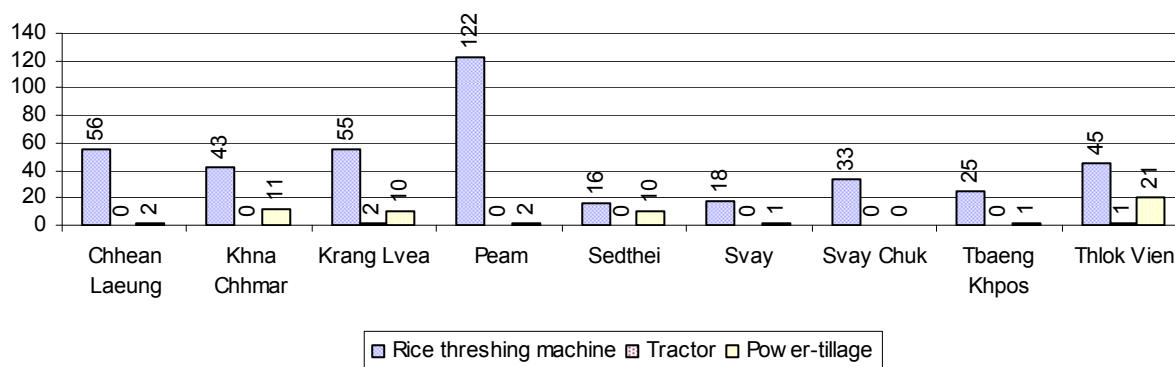
Note: Calculated by dividing total number of cattle/buffalo by total number of cattle/buffalo raising families

2.5.26 Percentage Families raising Cattle/Buffalo, for general and labor purposes in 2008, by Commune



Note: Calculated using the total number of families raising cattle/buffalo against the total number of families.

2.5.27 Type and number of agricultural Machines, by Commune, in 2008

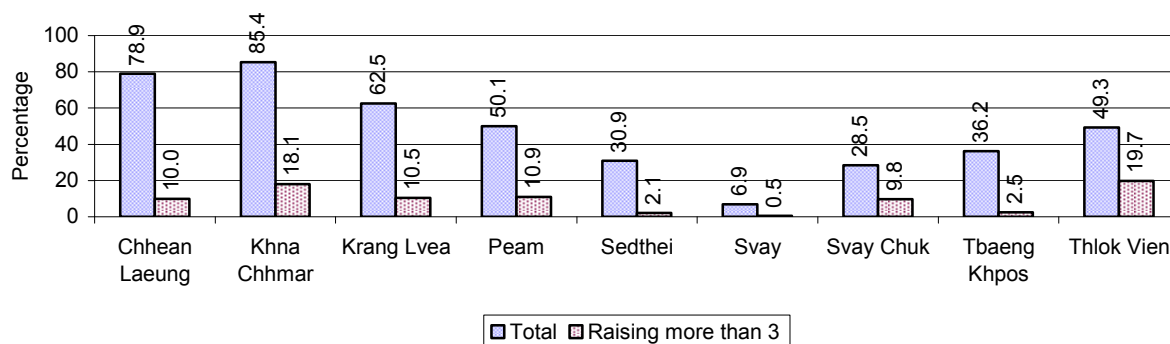


2.5.28 Livestock-producing Households over 3 years

Description	2006 %	2007 %	2008	
			%	Number
Total number of families raising pigs	50%	44%	44%	6,304 families
number of families raising more than 3 pigs	6%	6%	9%	1,226 families
Total number of families raising chickens	86%	87%	89%	12,812 families
number of families raising more than 3 chickens	69%	69%	72%	10,299 families
Total number of families raising ducks	5%	6%	4%	645 families
number of families raising more than 5 ducks	4%	4%	3%	468 families
Total number of families raising goats or sheep	0%	0%	0%	12 families
Total number of families raising horses	0%	0%	0%	52 families

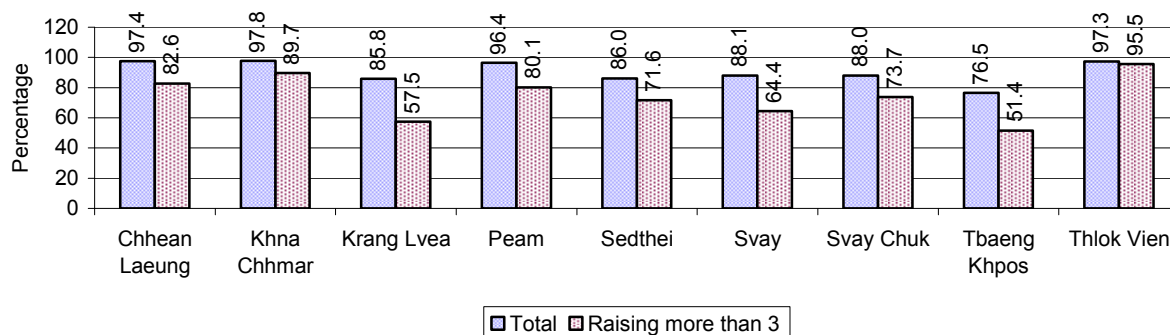
Note: Calculated against the total number of families

2.5.29 Percentage Families raising Pigs, by Commune, in 2008



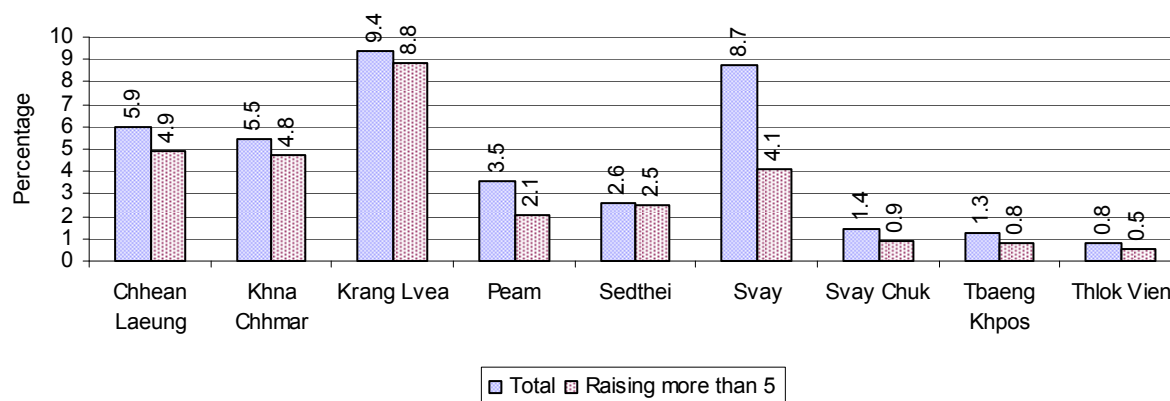
Note: Calculated against the total number of families in the commune

2.5.30 Percentage Families raising Chickens, by Commune, in 2008



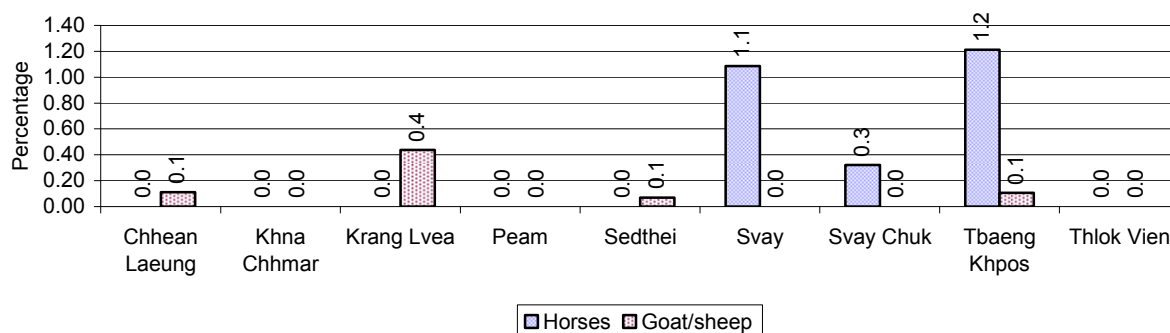
Note: Calculated against the total number of families in the commune

2.5.31 Percentage Families raising Ducks, by Commune, in 2008



Note: Calculated against the total number of families in the commune

2.5.32 Percentage Families raising Horses, Goats or Sheep, by Commune, in 2008

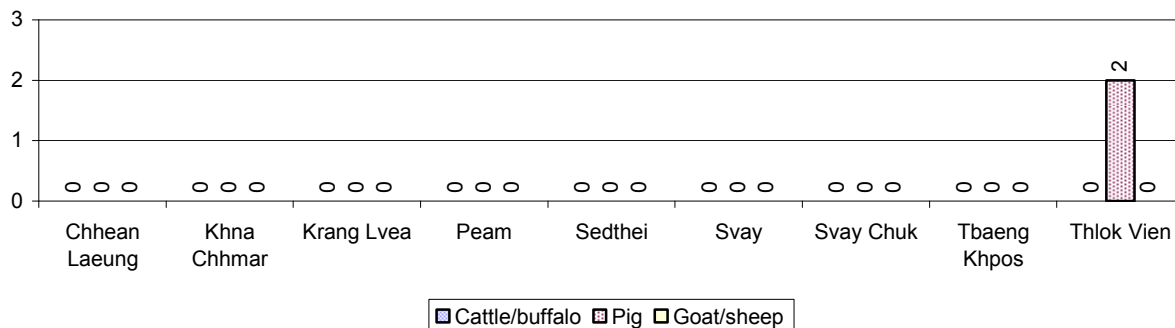


Note: Calculated against the total number of families in the commune

2.5.33 Livestock Farms over 3 years

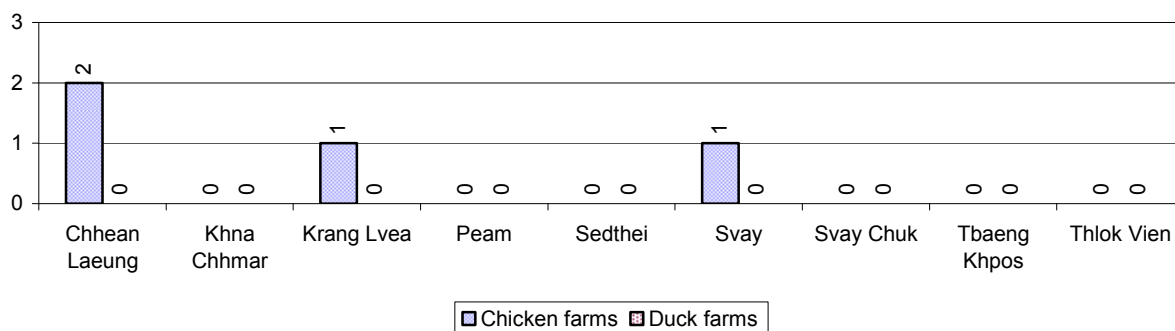
Description	2006	2007	2008
Number of cattle/buffalo farms	1 farm(s)	0 farm(s)	0 farm(s)
Number of pig farms	2 farm(s)	0 farm(s)	2 farm(s)
Number of goat/sheep farms	1 farm(s)	1 farm(s)	0 farm(s)
Number of chicken farms	4 farm(s)	5 farm(s)	4 farm(s)
Number of duck farms	1 farm(s)	0 farm(s)	0 farm(s)

2.5.34 Number Livestock Farms, by Commune in 2008



Note: Number of farms are recorded by the village chief, not by counting number of livestock in each farm

2.5.35 Number Chicken and Duck Farms, by Commune, for 2008



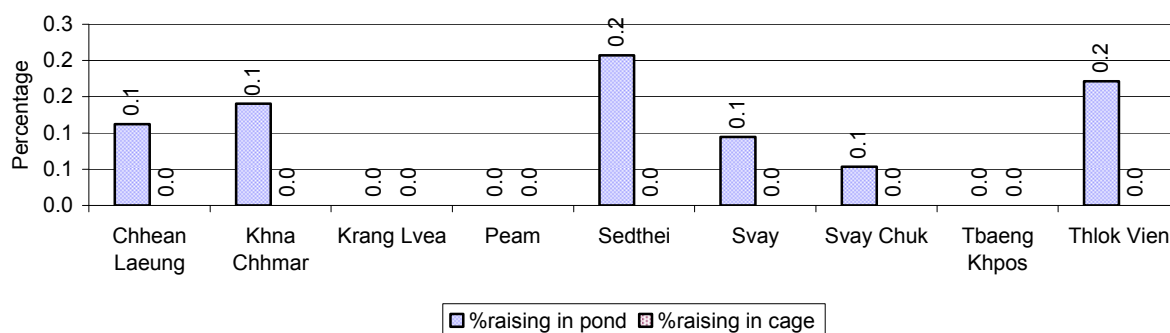
Note: Number of farm places recorded by village chief, not by counting number of livestock in each farm

2.5.36 Families raising Fish over 3 years

Description	2006	2007	2008
Total number of families raising fish	12 families	18 families	11 families
% families raising fish	0%	0%	0%
Number families raising fish in pond	12 families	18 families	11 families
% families raising fish in pond	0%	0%	0%
Number fish pond	12 pond(s)	18 pond(s)	11 pond(s)
No. of ponds per family	1.0 pond/families	1.0 pond/families	1.0 pond/families
Number of families raising fish in cage	0 families	0 families	0 families
%families raising fish in cage	0%	0%	0%
Number of fish cage	0 cage(s)	0 cage(s)	0 cage(s)
No. of fish cage per family	- cage /families	- cage /families	- cage /families

Note: % of families raising fish or fish in ponds or cages is calculated as a percentage of the total number of families.

2.5.37 Percentage of Families raising Fish, by Commune, in 2008



Note: Calculated as a percentage of the total number of families in the commune.

2.5.38 Shrimp and Prawn Farming over 3 years

Description	2006	2007	2008
Number of families raising shrimps	0 families	0 families	0 families
% Families raising shrimps	0%	0%	0%
Number of shrimp ponds	0 pond	0 pond	0 pond
Total area raising shrimps	0 ha	0 ha	0 ha
Area per family	-ha/families	-ha/families	-ha/families
Number of families raising prawns	0 families	0 families	0 families
% families raising prawns	0%	0%	0%
Number prawn ponds	0 pond	0 pond	0 pond
Ponds per families	- pond/families	-pond/families	-pond/families
Number of prawn cages	0 cage	0 cage	0 cage
Cages per families	0 cage /families	0 cage /families	0 cage /families

Note: Percentage of families raising either prawns or shrimp is calculated against the number of families, who do aquaculture farming, NOT the total population.

2.5.39 Numbers of Families raising Shrimps and number of Shrimp Ponds, by Commune, in 2008

There were none of these in this District in 2008

2.5.40 Number of Families raising Prawn and Number of Prawn Ponds/Cages, by Commune, in 2008

There were none of these in this District in 2008

3 Social Aspects

3.1 Education

3.1.1 Kindergarten in the District over 3 years

Description	2006	2007	2008
Number of community kindergarten schools	5 school(s)	3 school(s)	3 school(s)
Number of community kindergarten class rooms	5 room(s)	3 room(s)	3 room(s)
Number of community kindergarten classes	5 class(es)	3 class(es)	3 class(es)
Number of community kindergarten teachers	5 person(s)	3 person(s)	2 person(s)
Number of women community kindergarten teachers	5 women	3 women	2 women
Number of state and private kindergarten schools	3 school(s)	2 school(s)	3 school(s)
Number of state and private kindergarten class rooms	4 room(s)	5 room(s)	5 room(s)
Number of state and private kindergarten classes	4 class(e)s	5 class(es)	6 class(es)
Number of state and private kindergarten teachers	5 person(s)	5 person(s)	6 person(s)
Number of women state and private kindergarten teachers	5 women	5 women	6 women

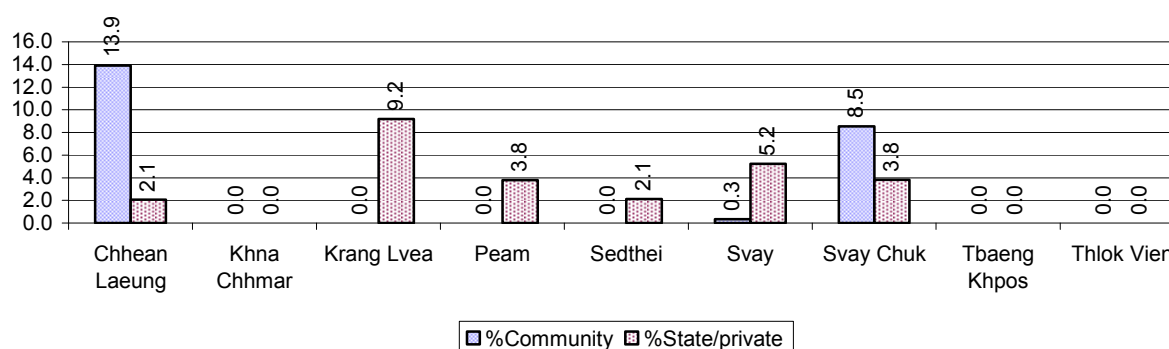
3.1.2 Percentage enrolment at Kindergarten level over 3 years

This table shows the percentage of the total 3-5 year old population attending kindergarten.

Description	2006 %	2007 %	2008	
			%	Number
Total percentage of children, 3-5 yrs, go to kindergarten	10%	4%	6%	359 person(s)
Percentage of children, 3-5 yrs, go community kindergarten	4%	1%	2%	137 person(s)
Percentage children, 3-5 yrs, go state/private kindergarten	6%	3%	3%	222 person(s)

Note: Calculated against the total for that age group

3.1.3 Percentage of Children 3-5 yrs attending Kindergarten, by Commune, in 2008



3.1.4 Basic Education over 3 years

Primary School

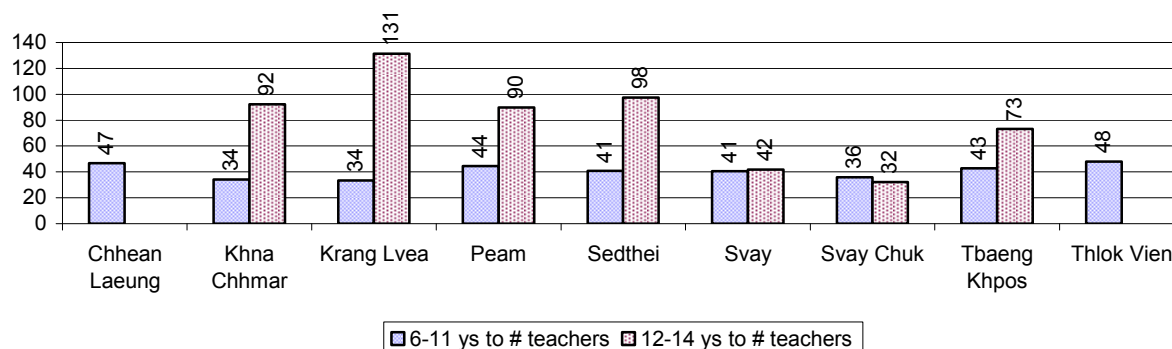
Description	2006	2007	2008
Number of primary schools	42 school(s)	31 school(s)	31 school(s)
Number of primary school rooms	238 room(s)	222 room(s)	222 room(s)
Number of primary classes	327 class(es)	312 class(es)	316 class(es)
Number of primary teachers	252 person(s)	252 person(s)	260 person(s)
Ratio of children 6-11 yrs to school	264	338	333
Ratio of children 6-11 yrs to school room	47	47	46
Ratio of children 6-11 yrs to class	34	34	33
Ratio of children 6-11 yrs to teacher	44	42	40

Note: According to education norm, children 6-11 yrs should attend primary school, while 12-14 yrs should be in lower secondary school, but in reality this varies.

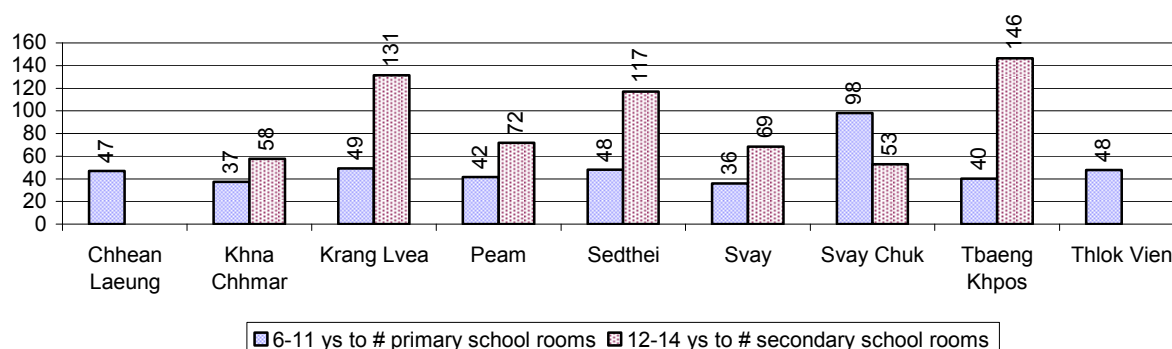
Lower Secondary School

Description	2006	2007	2008
Number of lower secondary schools	5 school(s)	6 school(s)	7 school(s)
Number of lower secondary school rooms	31 room(s)	45 room(s)	59 room(s)
Number of lower secondary classes	27 class(es)	32 class(es)	50 class(es)
Number of lower secondary teachers	27 person(s)	55 person(s)	76 person(s)
Ratio children 12-14 yrs to school	1,158	994	802
Ratio of children 12-14 yrs to school room	187	133	95
Ratio of children 12-14 yrs to class	214	186	112
Ratio of children 12-14 yrs to teacher	214	108	74

3.1.5 Ratio of 6-11 year old and 12-14 year old Children to number of Teachers, by Commune, in 2008



3.1.6 Ratio of 6-11 year old and 12-14 year old Children to number of School Rooms, by Commune, in 2008



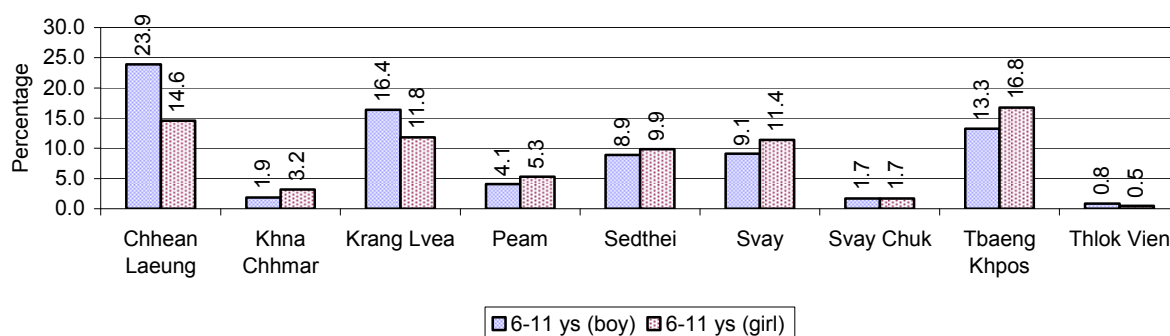
3.1.7 Enrolment status at Primary Level over 3 years

Description	2006 %	2007 %	2008	
			%	Number
Total children aged 6-11 years old	16%	15%	15%	10,317 person(s)
Total children aged 6-11 who are in school	84%	90%	91%	9,436 person(s)
Total children aged 6-11 who are not in school	16%	10%	9%	881 person(s)
Total girls aged 6-11 years old	16%	14%	14%	5,146 person(s)
Total girls aged 6-11 who are in school	84%	92%	92%	4,713 person(s)
Total girls aged 6-11 who are not in school	16%	8%	8%	433 person(s)
Total boys aged 6-11 years old	17%	16%	15%	5,171 person(s)
Total boys aged 6-11 who are in school	85%	88%	91%	4,723 person(s)
Total boys aged 6-11 who are not in school	15%	12%	9%	448 person(s)

Note 1: Percentage is calculated on the basis of the total number of children within 6-11 year age group for the first 3 rows and for the total girls and the total boys aged 6-11 yrs.

Note 2: Number of girls aged 6-11 who are in & not in school is calculated against the total number of girls aged 6-11 yrs. Number boys, 6-11 yrs who are in & not in school are calculated against the total number of boys aged 6-11 yrs.

3.1.8 Percentage of 6-11 year old Children not in School, by Commune, in 2008



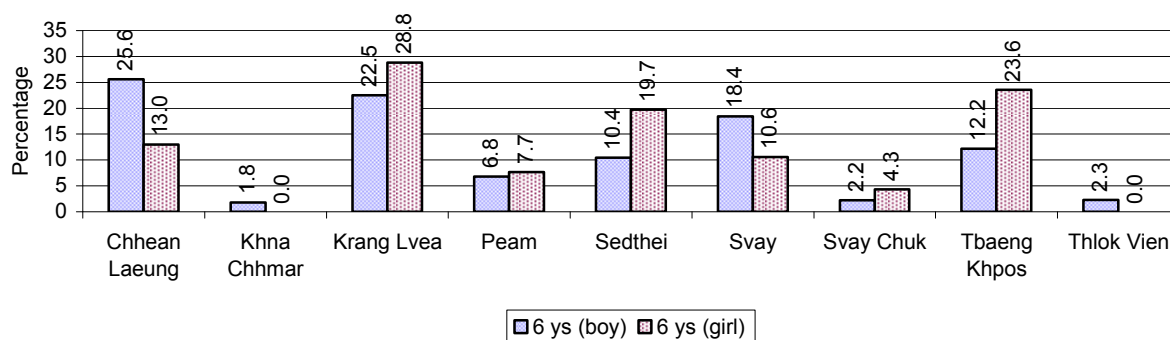
Note: calculated on the basis of the total number of children within 6-11 year age group in the commune.

3.1.9 Enrolment of 6 year old Children over 3 years

Description	2006 %	2007 %	2008	
			%	Number
Total % and number of children aged 6 years old	4%	4%	4%	3,056 person(s)
Total % of children aged 6 years old in school	83%	88%	86%	2,642 person(s)
Total % of children aged 6 years old not in school	17%	12%	14%	414 person(s)

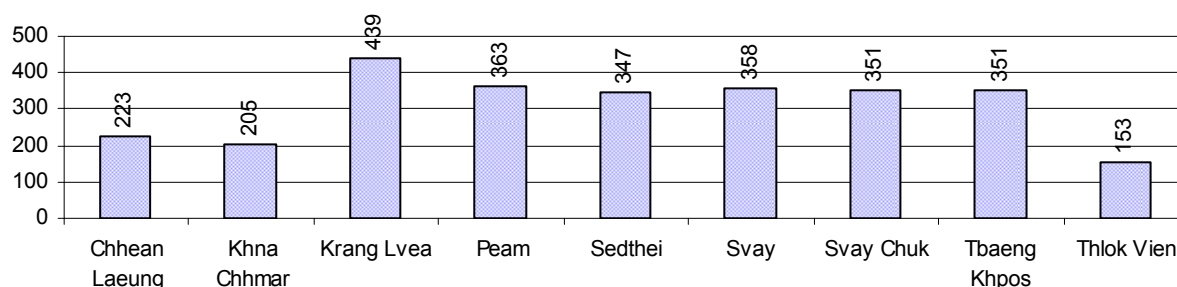
Note: First row calculated as a percentage of total population. Second and third row calculated as a percentage of the total number of 6 year olds.

3.1.10 Percentage of 6 year old Children not in School, by Commune, in 2008



Note: Calculated as a percentage of total 6 year old population

3.1.11 Number of 5 year old Children in each Commune in 2008

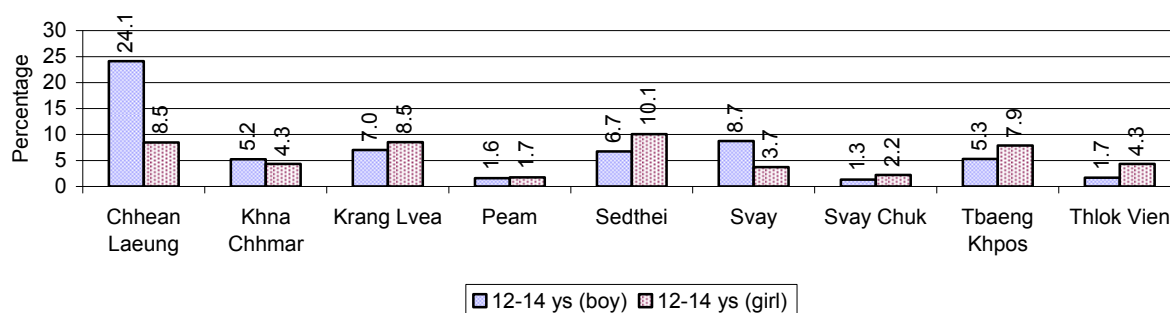


3.1.12 Enrolment at Lower Secondary Level over 3 years

Description	2006 %	2007 %	2008	
			%	Number
Total children aged 12-14 years old	8%	8%	8%	5,616 person(s)
Children aged 12-14 years old in school	86%	89%	94%	5,293 person(s)
Children aged 12-14 years old not in school	14%	11%	6%	323 person(s)
Total girls aged 12-14 years old	8%	8%	8%	2,761 person(s)
Girls aged 12-14 years old in school	84%	88%	94%	2,608 person(s)
Girls aged 12-14 years old not in school	16%	12%	6%	153 person(s)
Total boys aged 12-14 years old	9%	9%	8%	2,855 person(s)
Boys aged 12-14 years old in school	89%	90%	94%	2,685 person(s)
Boys aged 12-14 years old not in school	11%	10%	6%	170 person(s)

Note: Percentage is calculated on the basis of number of the total number of children within 12-14 yrs group, except for the first row of each section which is calculated on the basis of the total population.

3.1.13 Percentage of 12-14 year olds not in School, by Commune, in 2008



Note: Calculated as a percentage of the total 12-14 year old population in each commune

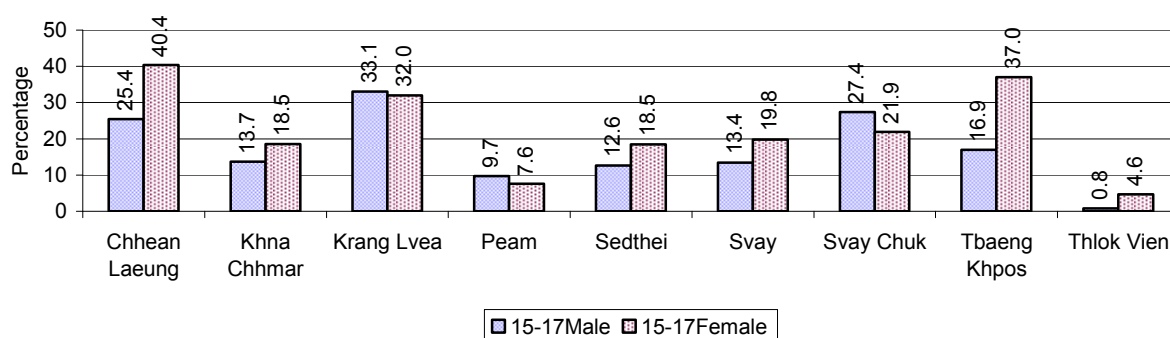
3.1.14 Upper Secondary Schools over 3 years

Description	2006	2007	2008
Number of upper secondary schools	1 school(s)	1 school(s)	1 school(s)
Number of upper secondary school rooms	14 room(s)	18 room(s)	18 room(s)
Number of upper secondary classes	27 class(es)	29 class(es)	26 class(es)
Number of upper secondary teachers	29 person(s)	37 person(s)	44 person(s)
Ratio of 15-17 yr olds to number of school	5,157	5,606	5,758
Ratio of 15-17 yr olds to number of school room	368	311	320
Ratio of 15-17 yr olds to number of classes	191	193	221
Ratio of 15-17 yr olds to number of teacher	178	152	131

3.1.15 Enrolment of 15-17 year old teenagers over 3 years

Description	2006	2007	2008
Number of teenage, 15-17 years old	5,157 person(s)	5,606 person(s)	5,758 person(s)
Number of teenage, 15-17 years old, who are not studying	1,292 person(s)	1,236 person(s)	1,212 person(s)
Percentage of teenage, 15-17 years old not studying	25%	22%	21%

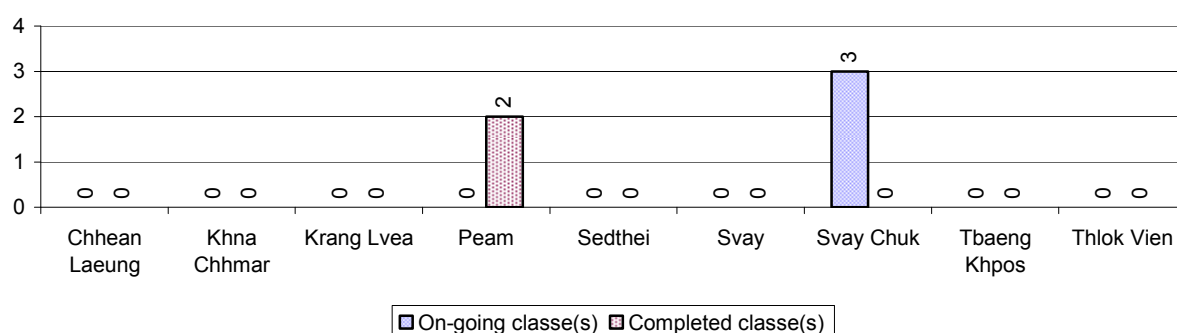
3.1.16 Percentage of 15-17 year old Teenagers not at School, by Commune, in 2008



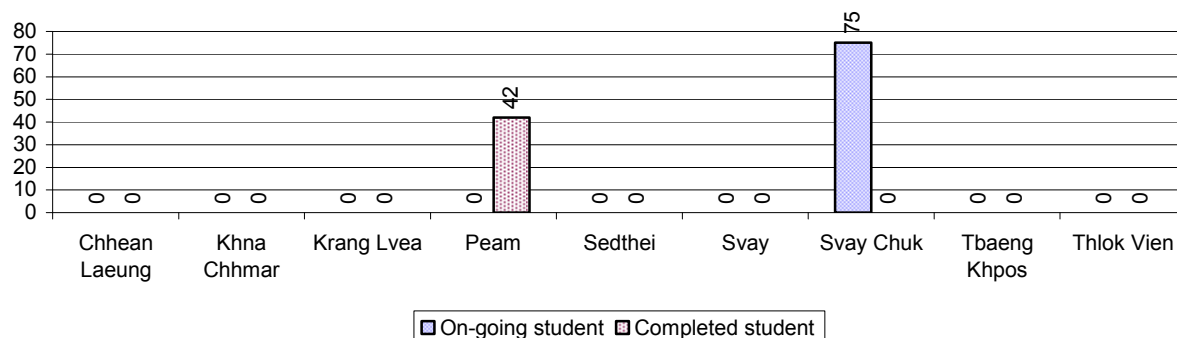
3.1.17 Literacy Classes as of 2008

Literacy classes	Organized by:		Other Program(s)	Total
	PDoEYS	NGOs		
Number of On-going literacy classes	3 class(es)	0 class(es)	0 class(es)	3 class(e(s)
Number of literacy students in on-going classes	75 person(s)	0 person(s)	0 person(s)	75 person(s)
Completed literacy class(es)	2 classes	0 classes	0 classes	2 classes
Number of literacy students that have completed literacy classes	42 person(s)	0 person(s)	0 person(s)	42 person(s)
Number of students that passed	42 person(s)	0 person(s)	0 person(s)	42 person(s)

3.1.18 Number of on-going and completed Literacy Classes, by Commune, in 2008



3.1.19 Students of on-going & completed Literacy Classes, by Commune, in 2008

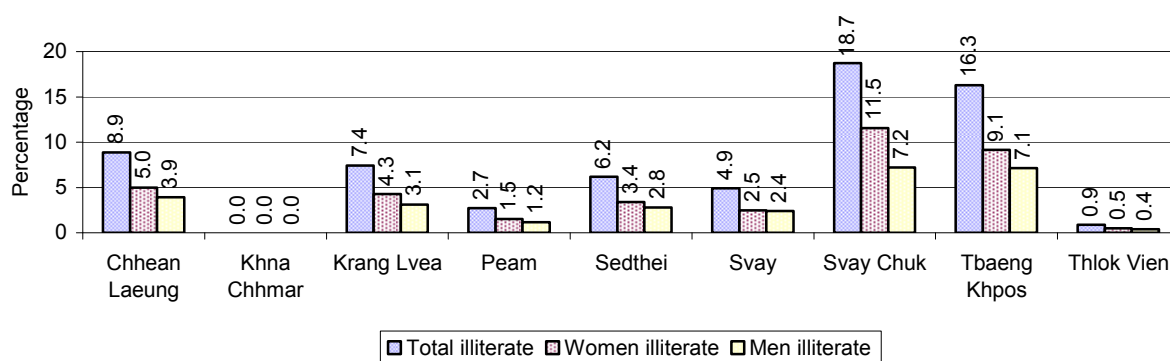


3.1.20 Percentage of illiterate People between 15-60, over 3 years

Illiteracy Status	2006 %	2007 %	2008	
			%	Number
Illiterate people, 15-60 years old	11%	10%	8%	3,110 person(s)
Illiterate females, 15-60 years old	7%	6%	4%	1,788 person(s)
Illiterate people, 15-17 years old	7%	5%	4%	233 person(s)
Illiterate females, 15-17 years old	4%	3%	2%	106 person(s)
Illiterate people, 18-24 years old	8%	5%	3%	314 person(s)
Illiterate females, 18-24 years old	4%	3%	2%	190 person(s)
Illiterate people, 25-60 years old	13%	14%	11%	2,563 person(s)
Illiterate females, 25-60 years old	8%	8%	6%	1,492 person(s)

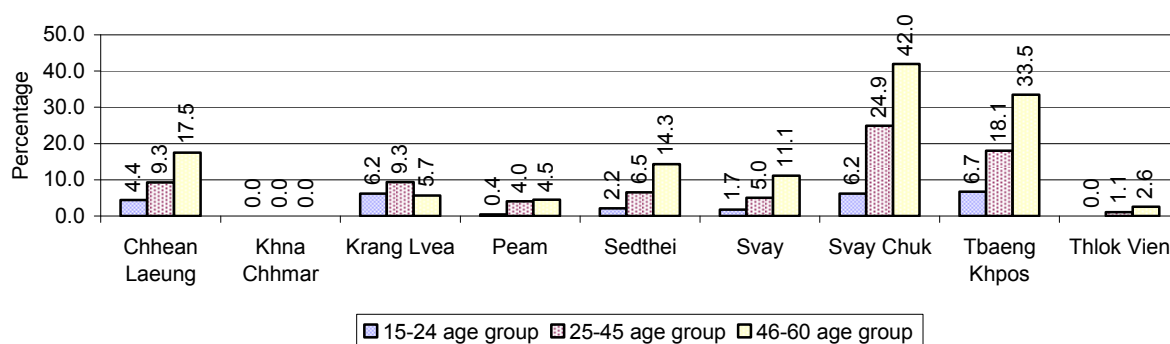
Note: Percentage is calculated on the basis of number of people in age each group.

3.1.21 Percentage illiterate People among 15-60 yrs old, by Commune, in 2008



Note: Percentages are calculated on the basis of number of people in that age group.

3.1.22 Percentage illiterate People for 15-24 yrs, 25-45 yrs and 46-60 yrs, by Commune, in 2008



Note: Percentage of illiterate people in each age group is calculated on the basis of number of people in that age group.

3.2 Health

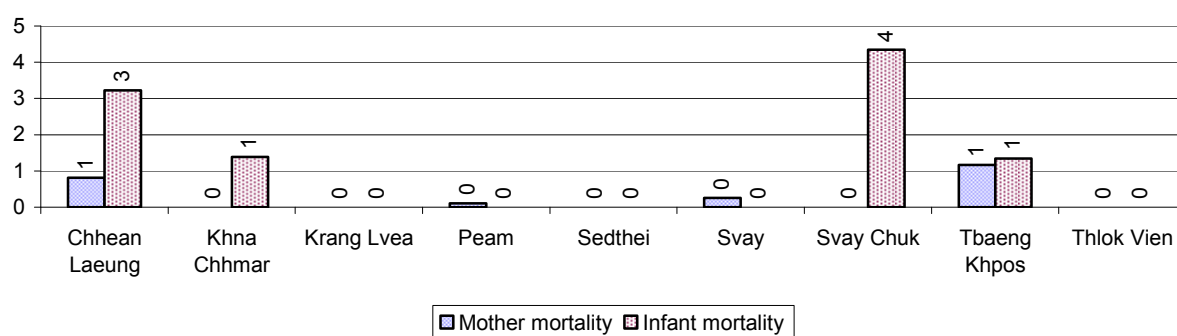
3.2.1 Health Situation of Women and Children, over 3 years

Description	2006	2007	2008
Number families with a birth during the year	1,220 families	1,401 families	1,255 families
Number of women who had their baby delivered by a TBA	666 person(s)	521 person(s)	237 person(s)
Percentage of women who had their baby delivered by a TBA	55 %	37 %	19 %
Number of women who had their baby delivered by a midwife	554 person(s)	880 person(s)	1,018 person(s)
Percentage of women had their baby delivered by a midwife	45 %	63 %	81 %
Number of mothers who died within 1 month of giving birth	6 person(s)	7 person(s)	21 person(s)
Mothers who died within 1 month of giving birth per 100,000 families having a delivery	492	500	1,673
Number of infants born during the year	1,220 person(s)	1,402 person(s)	1,282 person(s)
Number of Infants who died within 1 month	26 person(s)	27 person(s)	9 person(s)

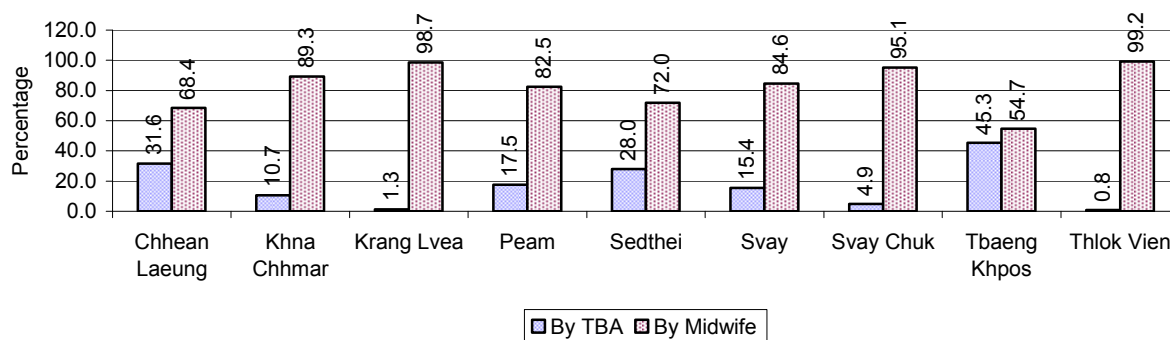
Description	2006	2007	2008
Infants mortality within 1 month per 1,000 births	21	19	7
Number of children who died below the age of 5.	31 person(s)	69 person(s)	15 person(s)
Number of infants, aged 9-12 months, born during the year	849 person(s)	940 person(s)	900 person(s)
Nr. infants, aged 9-12 months, not receiving full immunization	55 person(s)	63 person(s)	116 person(s)
% of 9-12 months infants, not receiving full immunization	6 %	7 %	13 %

Note: TBA = Traditional Birth Attendant

3.2.2 Mothers dying within 0 days to 1 month of giving Birth and Infants dying within 1 month in 2008, by Commune

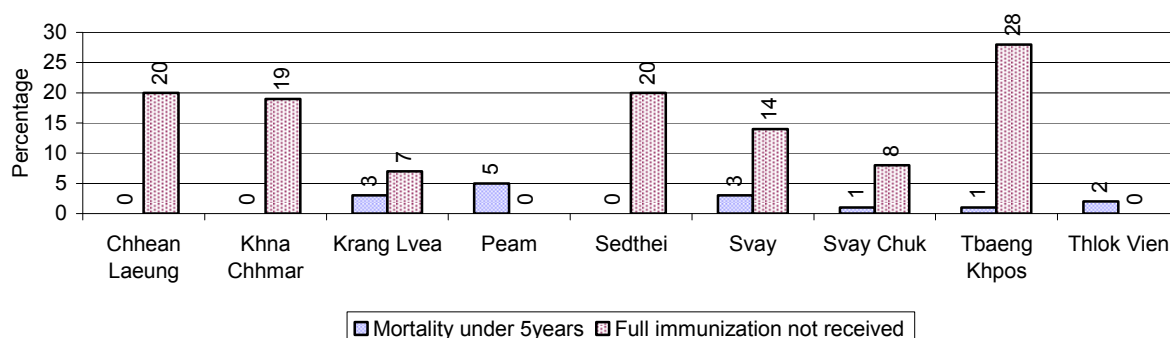


3.2.3 Percentage of Women delivering with a TBA or Midwife, by Commune



Note: Calculated as a percentage of total deliveries

3.2.4 Percentage of Children dying below 5 & of 9-12 months not receiving full Immunization, by Commune, in 2008



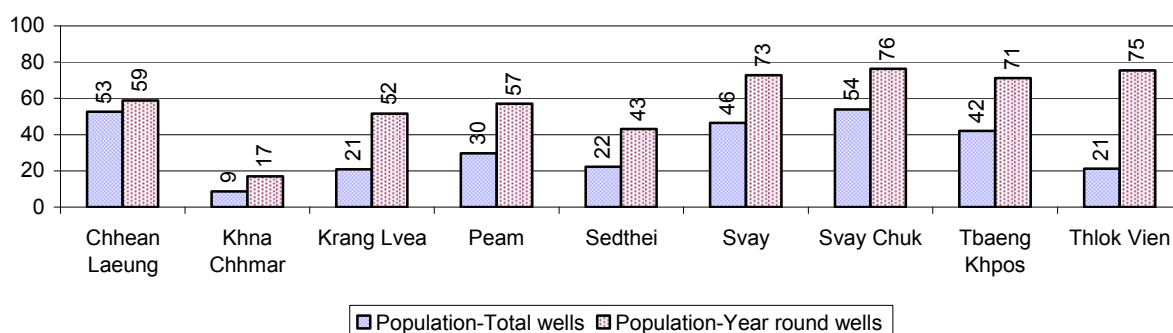
Note: Mortality rate calculated as a percentage of the total 5 year old population. Lack of immunization received calculated as a percentage of the total number 9-12 months olds there are

3.3 Water and Sanitation

3.3.1 Number of different types of Wells over 3 years

Type of wells	Number of wells by year		
	2006	2007	2008
<i>Total number of pumped or mixed wells</i>	1,154	1,182	1,222
Year-round usable pumped or mixed wells	800	884	910
Dry season unusable pump or mixed wells	354	298	312
Pump or mixed wells needing repair/rehabilitation	166	192	147
<i>Total number of ring wells</i>	1,345	1,497	1,568
Year-round usable ring wells	395	467	521
Dry season unusable ring wells	950	1,030	1,047
Ring wells needing repair/rehabilitation	314	225	264
<i>Total number of unprotected dug wells</i>	354	176	146
Year-round usable unprotected dug wells	160	41	45
Dry season unusable unprotected dug wells	194	135	101

3.3.2 Ratio of People to Wells, by Commune, in 2008

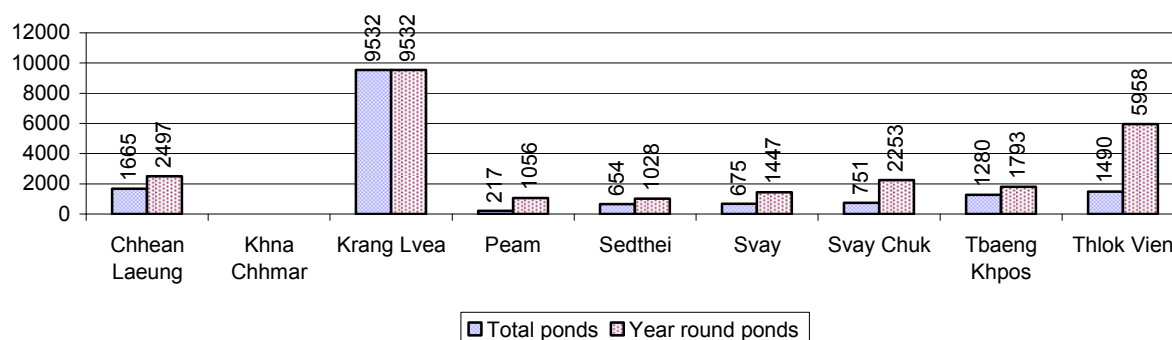


Note: Year-round wells excluding unprotected wells

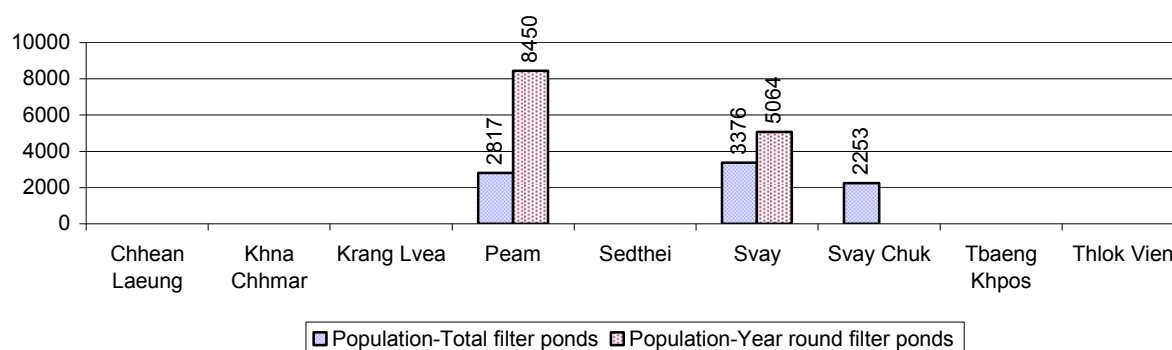
3.3.3 Potable Ponds over 3 years

Type of Pond	2006	2007	2008
<i>Total number of normal-type ponds</i>	105 pond	77 pond	92 pond
Year-round usable normal-type ponds	26 pond	29 pond	35 pond
Dry season unusable normal-type ponds	79 pond	48 pond	57 pond
Normal-type ponds needing repair/rehabilitation	41 pond	42 pond	47 pond
<i>Total number of filter ponds</i>	27 pond	16 pond	10 pond
Year-round usable filter ponds	7 pond	5 pond	3 pond
Filter ponds, dry season unusable	20 pond	11 pond	7 pond
Filter ponds needing repair/rehabilitate	18 pond	11 pond	7 pond

3.3.4 Ratio of People to normal Ponds, by Commune in 2008



3.3.5 Ratio of People to Filter Ponds, by Commune, in 2008

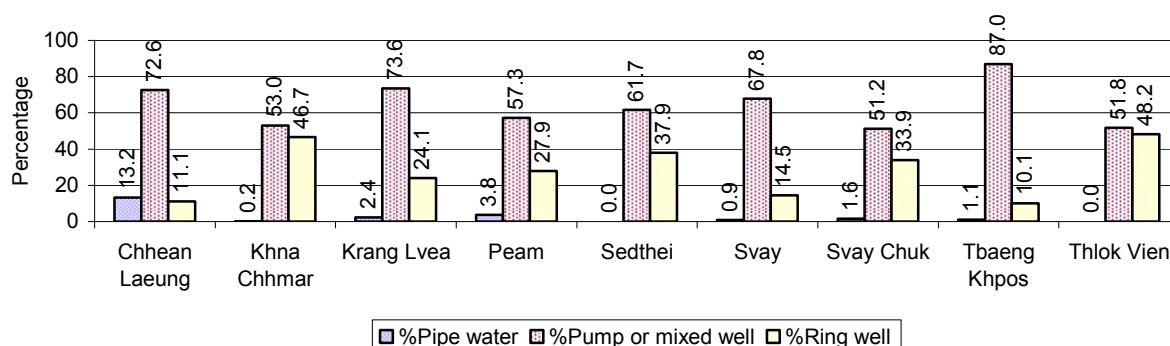


3.3.6 Source of potable Water for Households, over 3 years

Water sources	2006 %	2007 %	2008	
			%	Number
Families using water from purification system	0%	1 %	2 %	298 families
Families using water from pump, mixed wells	68%	57 %	65 %	9,265 families
Families using water from ring wells and open dug wells	26%	33 %	27 %	3,923 families
Families using water from pond	4%	4 %	3 %	436 families
Families using water from rain water storage	1%	0 %	1 %	122 families
Families using water from rivers, lakes, natural ponds and reservoirs	2%	5 %	2 %	302 families

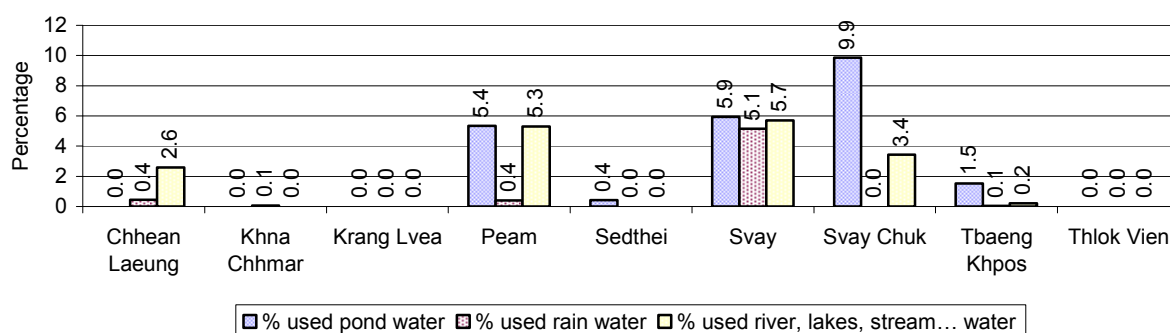
Note: Calculated as a percentage of the total number of families.

3.3.7 Percentage Families using different Water Sources, by Commune, in 2008



Note: Calculated as a percentage of the total number of families in each commune

3.3.8 Percentage Families using Water from Rain Water Storage, Ponds and natural Sources (rivers/lakes/natural ponds/reservoirs), by Commune, 2008



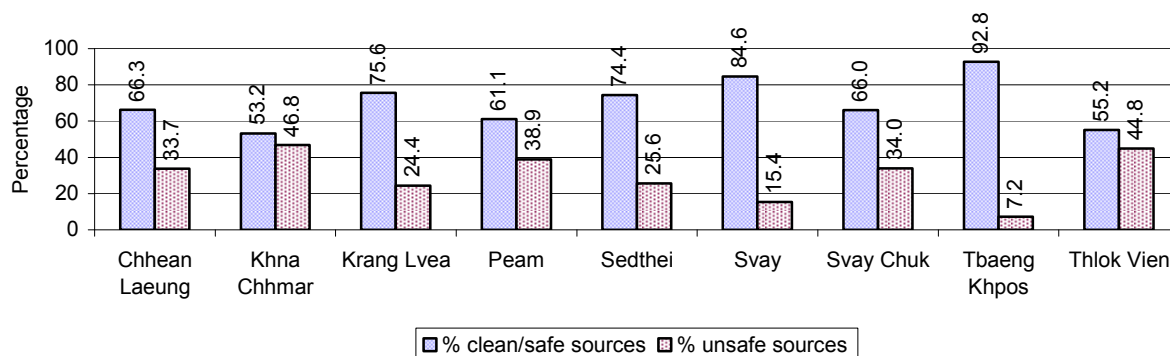
Note: Calculated as a percentage of the total number of families in each commune

3.3.9 Drinking Water Sources in the dry Season over 3 years

Percentage Families that get drinking water from:	2006 %	2007 %	2008	
			%	Number
from clean/safe sources	71 %	66 %	72 %	10,280 families
from unsafe sources	29 %	34 %	28 %	4,066 families

Note: Calculated as a percentage of the total number of families.

3.3.10 Percentage Families using safe and unsafe Water Sources in the dry Season, by Commune, in 2008



Note: Calculated as a percentage of the total number of families in each commune.

3.3.11 Drinking Water Purification by Households, over 3 years

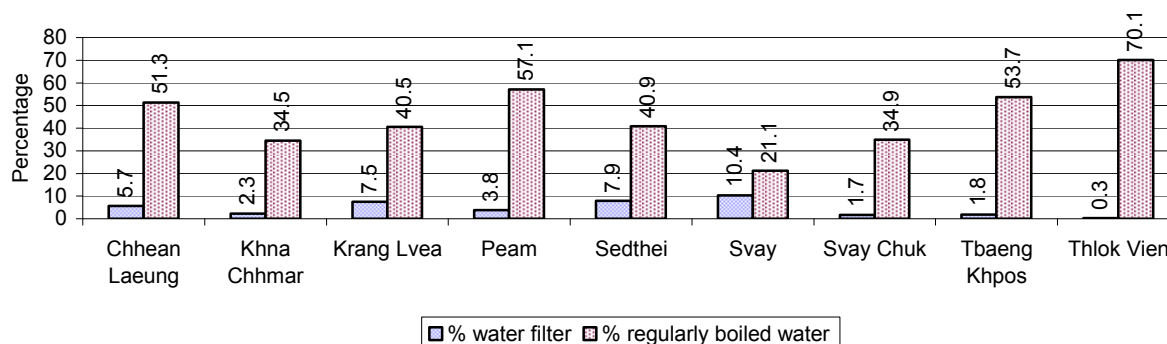
This table shows the different ways families make water safe for drinking.

Families, who:	2006	2007	2008	
	%	%	%	Number
Filter water for drinking	1%	1%	5 %	691 families
Boil water for drinking	33%	41%	43 %	6,191 families

Note: Calculated as a percentage of the total number of families

3.3.12 Percentage Families filtering Water or regularly boiling Water, by Commune, in 2008

This graph shows the different ways families make drinking water safe.



Note: Calculated on as a percentage of the total number of families in each commune.

3.3.13 Families' access to Water, over 3 years

Families access to water	2006	2007	2008	
	%	%	%	Number
Families with water at home or in less than 150m	73%	35%	51 %	7,350 families
Families with water 150m or more away from home	25%	13%	17 %	2,387 families

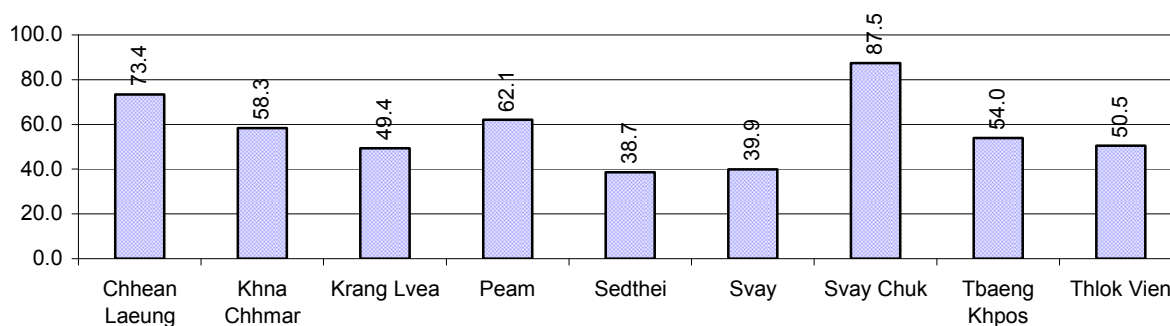
Note: Calculated as a percentage of the total number of families

3.3.14 Ratio of people to Latrines over 3 years

Description	2006	2007	2008	
	Ratio	Ratio	Ratio	Number
Ratio of people to latrines	86.1	70.2	53.0	1,336.0

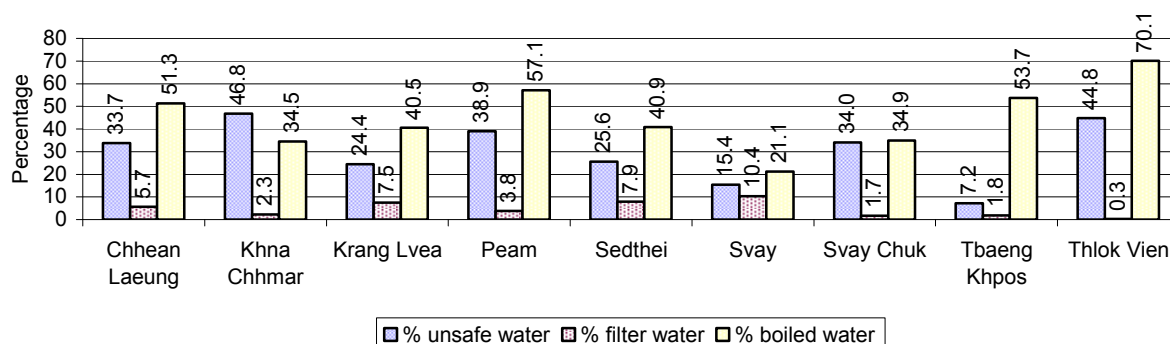
Note: Ratio calculated by dividing the number of houses with latrines by the total population

3.3.15 Ratio of People to Latrines, by Commune, in 2008



Note: Ratio calculated by dividing the number of houses with latrines by the total population in a Commune.

3.3.16 Percentage of Families drinking boiled, filtered or unsafe Water, by Commune, in 2008



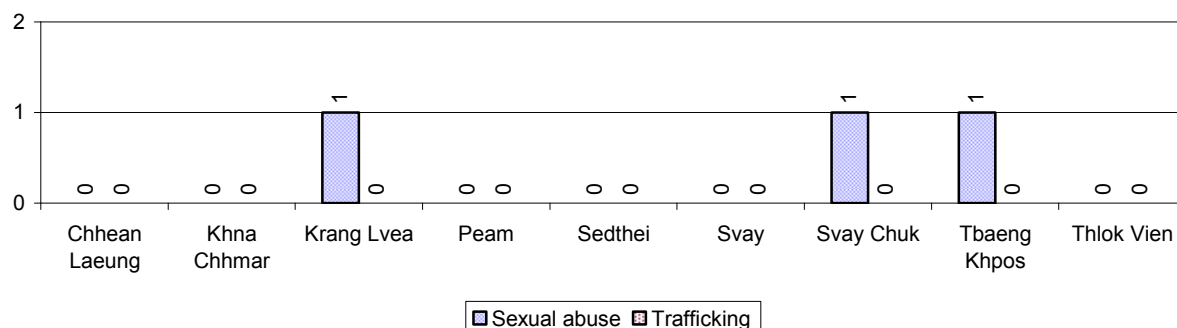
Note: Calculated as a percentage of the total number of families in each commune.

3.4 Vulnerable groups

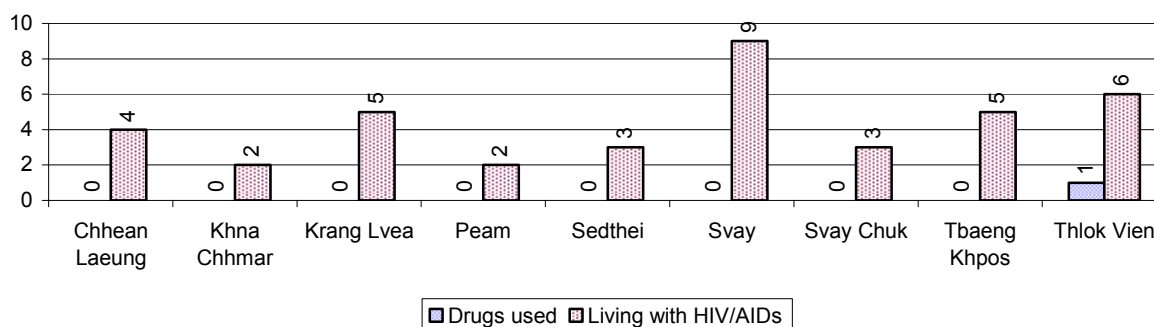
3.4.1 Vulnerable Groups in need of special Protection over 3 years

Vulnerable groups	2006	2007	2008
Victims of sexual abuse	8 person(s)	4 person(s)	3 person(s)
Victims of human trafficking	0 person(s)	2 person(s)	0 person(s)
Families with family member(s) using drugs	0 families	3 families	1 families
Families with family member(s) living with HIV/AIDS	41 families	44 families	39 families
Children under 18 yrs old whose parent died of AIDS	108 person(s)	81 person(s)	93 person(s)
Orphaned/abandoned children under 18 yrs old (all cases)	439 person(s)	456 person(s)	468 person(s)
Elderly persons without guardian	263 person(s)	140 person(s)	116 person(s)
Disabled people able to earn an income	132 person(s)	210 person(s)	142 person(s)
Disabled people unable to earn an income	119 person(s)	266 person(s)	219 person(s)
Disabled people under 18 yrs old	125 person(s)	86 person(s)	67 person(s)
Victims of natural disasters	1,940 families	675 families	862 families
Victims of land mines and unexploded weapons	43 person(s)	7 person(s)	5 person(s)

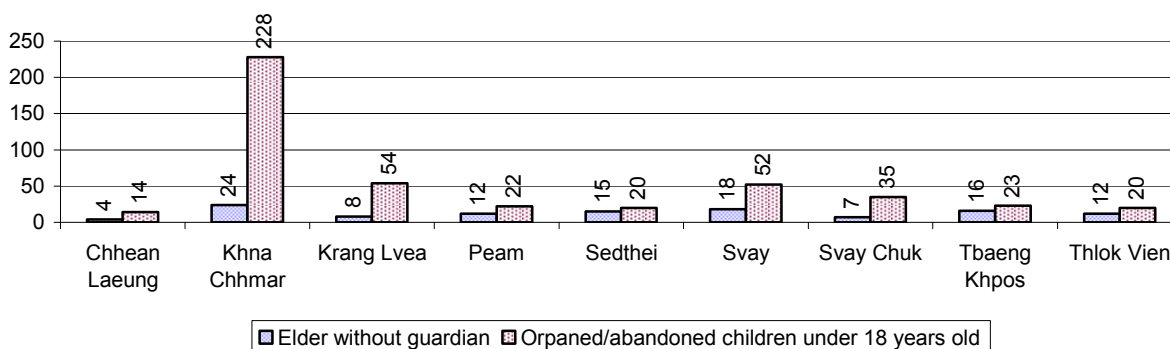
3.4.2 Registered Victims of sexual Abuse or Trafficking, by Commune, for 2008



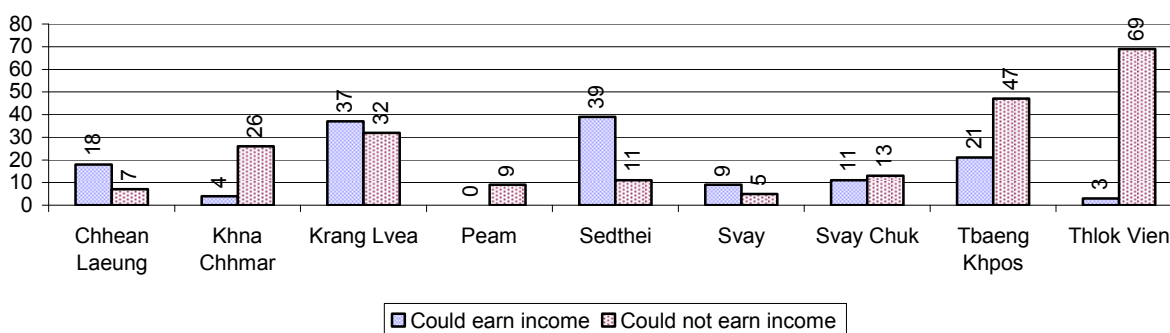
3.4.3 Registered Families with Member(s) using Drugs or living with HIV/AIDS, by Commune, for 2008



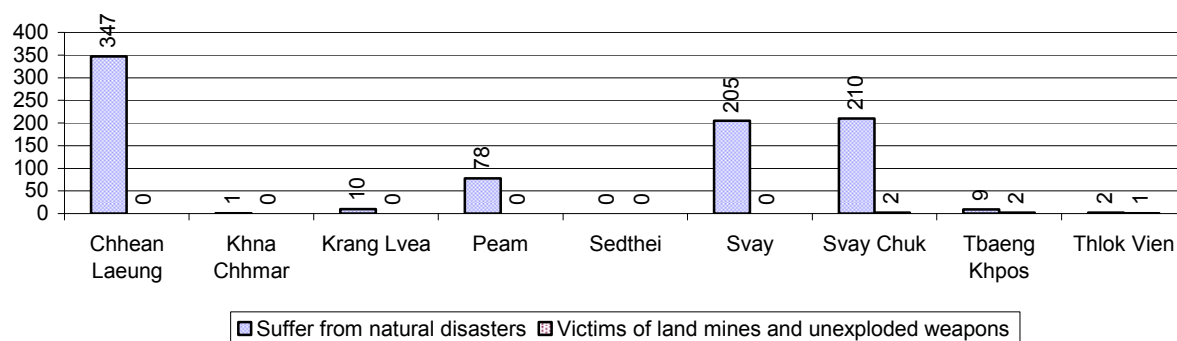
3.4.4 Elderly Persons without a Guardian and orphaned/abandoned Children under 18 years old, by Commune, for 2008



3.4.5 Number of disabled People who could or could not earn an Income, by Commune, for 2008



3.4.6 Number of Families who suffered from natural Disasters, and number of Victims of Land Mines and unexploded Weapons, by Commune, in 2008



3.5 Migration

3.5.1 Migration over 3 years

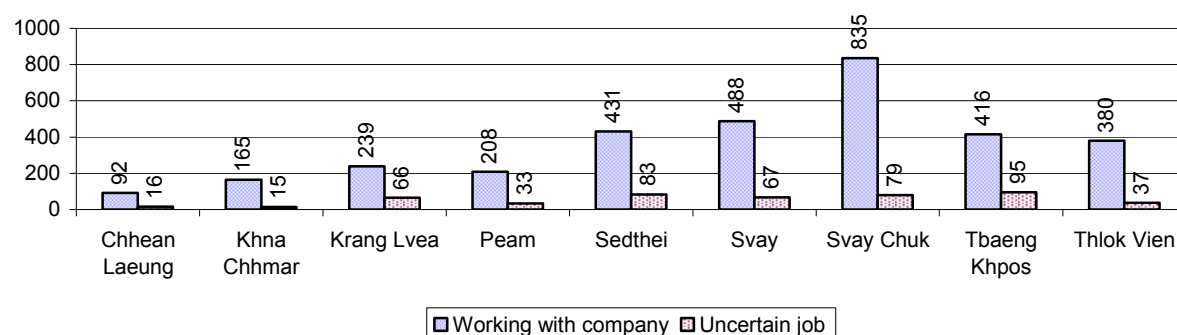
Description	2006	2007	2008
Number of families permanently in-migrated	67families	97 families	114 families
Total number of people	292 person(s)	367 person(s)	352 person(s)
Total number of female	158 person(s)	195 person(s)	188 person(s)
Number of families permanently out-migrated	124 families	115 families	115 families
Total number of people	578 person(s)	496 person(s)	493 person(s)
Total number of female	313 person(s)	257 person(s)	243 person(s)
Number of families staying temporarily	62 families	44 families	73 families
Total number of people	195 person(s)	139 person(s)	170 person(s)
Total number of female	107 person(s)	64 person(s)	75 person(s)

3.5.2 Job Migration

Description	2006	2007	2008
Number of people migrated to work with company/factory	9%	9%	10% 3,254 persons
Number of people migrated to work, but have uncertain jobs	2%	2%	1% 491 persons

Note: Calculated as a percentage of the total population of 18-60 year olds

3.5.3 Number of People working outside their home Villages in a Company/Factory or with an uncertain Job in 2008

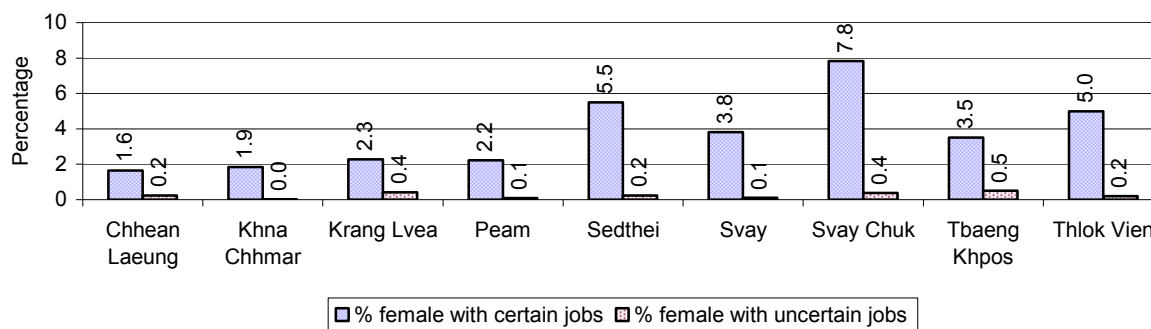


3.5.4 Female migration over 3 years

Description	2006 %	2007 %	2008	
			%	Number
Total number of migrants	5.2%	5.4%	5.3%	3,745 person(s)
Number of female migrants	3.8%	4.0%	4.1%	2,884 person(s)
Total number of migrants, who go to work with company/factory (with certain jobs)	4.1%	4.4%	4.6%	3,254 person(s)
Number of female migrants with certain jobs	3.5%	3.7%	3.8%	2,706 person(s)
Total number of migrants with uncertain jobs	1.1%	1.0%	0.7%	491 person(s)
Number of female migrants with uncertain jobs	0.3%	0.3%	0.3%	178 person(s)

Note: Calculated as a percentage of the total population

3.5.5 Percentage female Migrants with certain and uncertain Jobs, by Commune, in 2008



Note: Calculated as a percentage of the total population of the commune

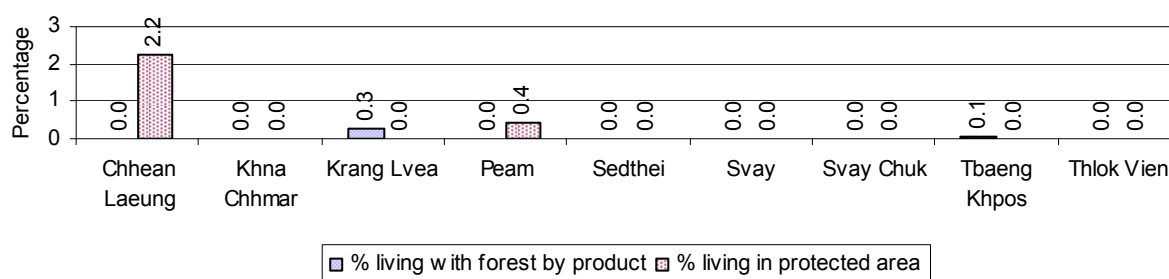
4 Natural Resources and Environment (NRE)

4.1 Families involved with NRE issues over 3 years

Description	2006 %	2007 %	2008	
			%	Number
Families living with forest by products	0 %	0 %	0 %	6 families
Families living in a protected area	1 %	0 %	0 %	27 families
Houses with access to garbage collection service	1 %	0 %	0 %	1 families
Families affected by environmental pollution	0 %	1 %	0 %	61 families
Families using chemical fertilizer	68 %	65 %	56 %	7,967 families
Families using chemical pesticide	9 %	12 %	7 %	1,017 families

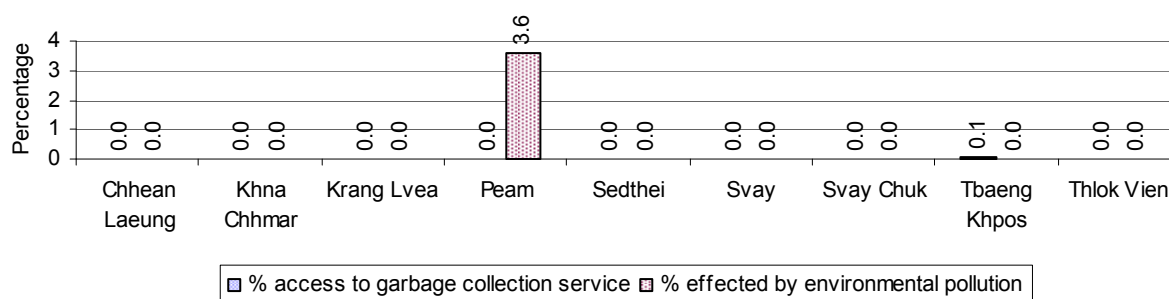
Note: Calculated as a percentage of the total number of families

4.2 Percentage of Families involved with Natural Resource issues, by Commune, for 2008



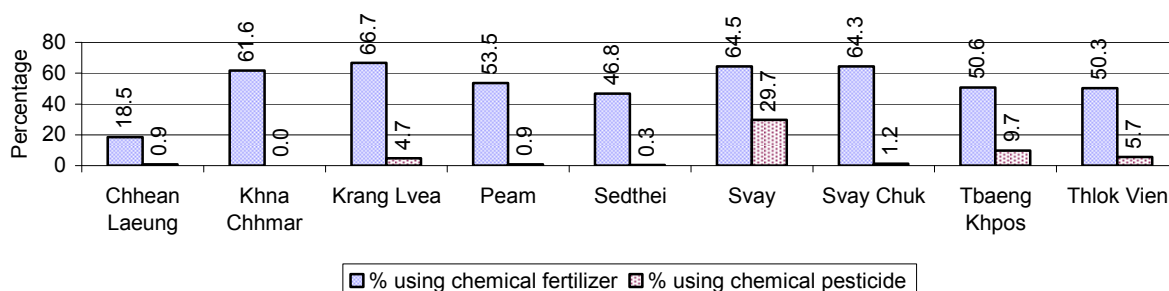
Note: Calculated as a percentage of the number of families in each commune

4.3 Percentage Houses with access to Garbage collection and Families affected by environmental Pollution, by Commune, for 2008



Note: Garbage collection is calculated as a percentage of the total number of houses in each commune and families affected by environmental pollution is calculated as a percentage of the total number of families in each commune.

4.4 Percentage Families using chemical Fertilizer and chemical Pesticides, by Commune, for 2008



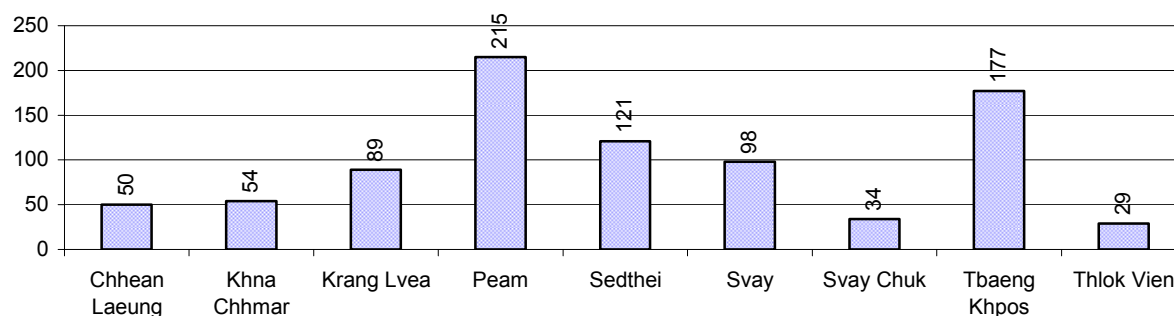
Note: Calculated as a percentage of the total number of families in each commune

5 Administration and Security

5.1 Birth Registration across 3 years

Description	2006	2007	2008
Number of infants to be registered	1,194 person(s)	1,375 person(s)	1,273 person(s)
Number of unregistered infants the year	501 person(s)	861 person(s)	867 person(s)
Percentage of infants unregistered	42 %	63 %	68 %

5.2 Number of unregistered Infants born in 2008, by Commune

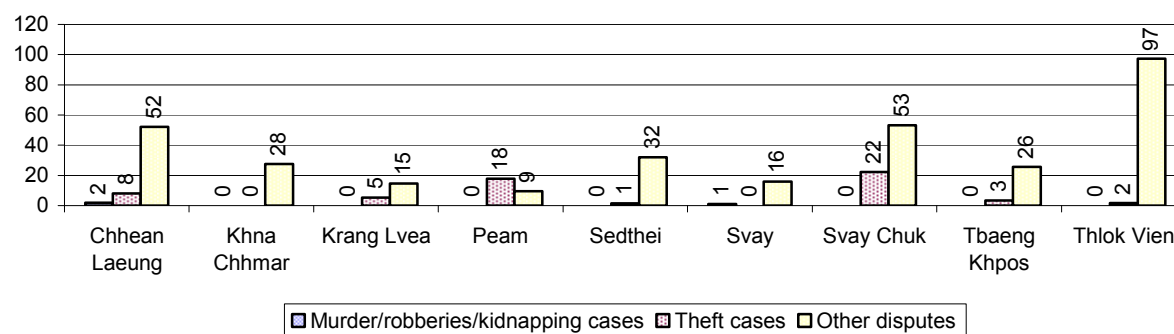


5.3 Registered criminal Cases over 3 years

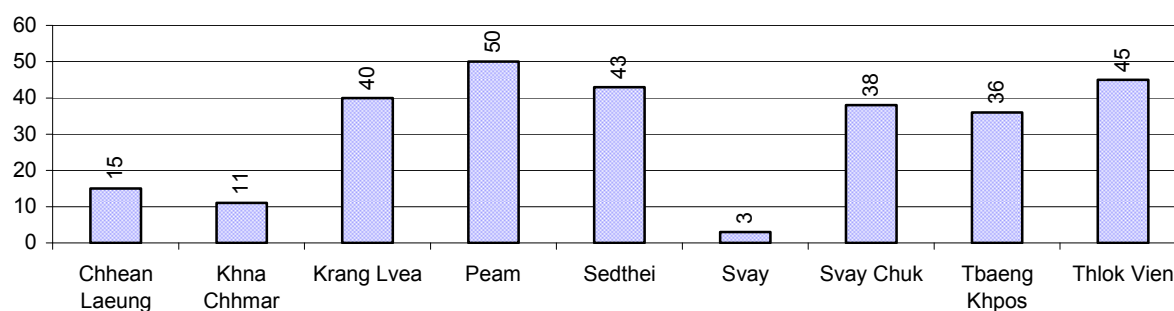
Description	2006	2007	2008
Murders, robberies and kidnapping cases	5 case(s)	6 case(s)	2 case(s)
Theft cases	114 case(s)	64 case(s)	49 case(s)
land dispute cases	202 case(s)	312 case(s)	281 case(s)
Other disputes cases	156 case(s)	241 case(s)	234 case(s)

Note: this reflects only registered criminal cases

5.4 Registered criminal Cases per 10,000 people, by Commune, for 2008



5.5 Number of registered Land Disputes, by Commune, in 2008

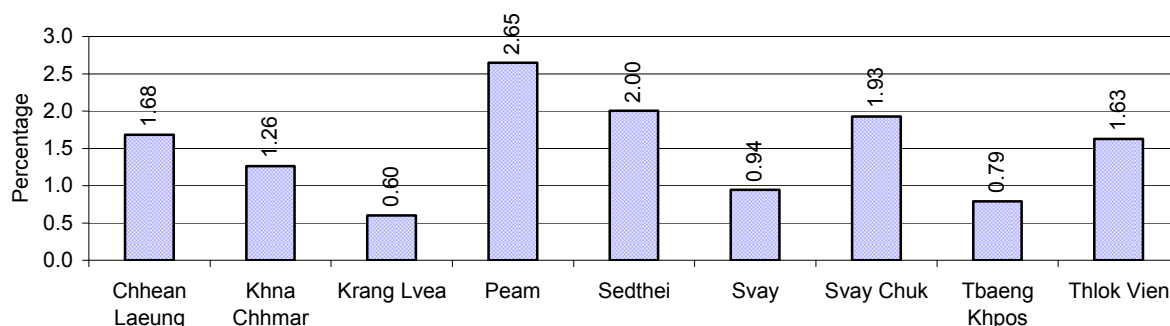


6 Gender

6.1 Registered Domestic Violence over 3 years

Description		2006	2007	2008
Families experiencing domestic violence		252 families	277 families	208 families(s)
% families experiencing domestic violence		2 %	2 %	1 %
Domestic violence cases reported by village chiefs		83 case(s)	258 case(s)	177 case(s)
Type	Physical violence	32 case(s)	112 case(s)	68 case(s)
	Sexual violence	1 case(s)	5 case(s)	19 case(s)
	Mental violence	37 case(s)	75 case(s)	54 case(s)
	Household economic violence	13 case(s)	66 case(s)	36 case(s)
Number of administrative decisions on domestic violence		64 case(s)	207 case(s)	131 case(s)
% of administrative decisions on domestic violence		77 %	80 %	74 %

6.2 Percentage of registered cases of Families experiencing domestic Violence, by Commune, in 2008



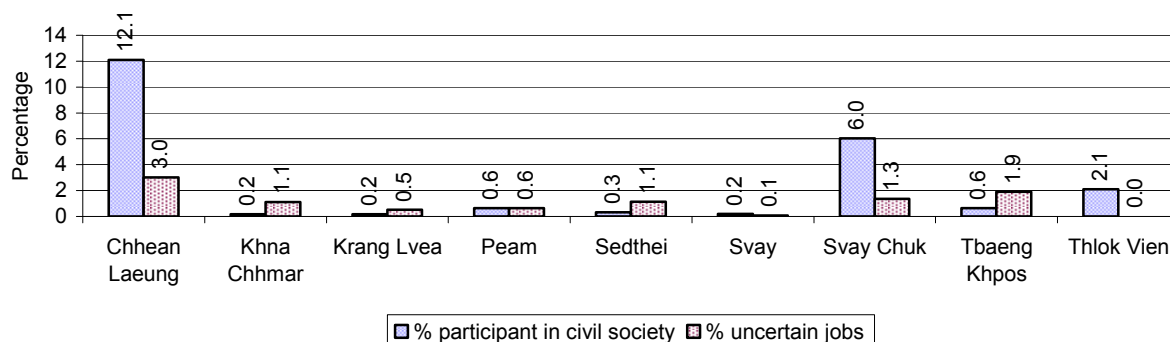
Note: Calculated as a percentage of the total number of families in each commune

6.3 Women's involvement over 3 years

Description	2006 %	2007 %	2008	
			%	Number
People participating in civil society	4%	3%	4%	2,856 person(s)
Women participating in civil society	2%	1%	2%	1,455 person(s)
People, 18-60 yrs, with uncertain/irregular jobs	6%	10%	2%	654 person(s)
Women, 18-60 yrs, with uncertain/irregular jobs	3%	5%	1%	340 person(s)

Note: Participation can be in NGOs, CBOs, credit groups, women's unions, parties and other civil society organizations. The first section is calculated as a percentage of the total population. The second section is calculated as a percentage of the total 18-60 year old population.

6.4 Percentage of Female Participants in Civil Society and of 18-60 year women with uncertain Jobs, by Commune, in 2008



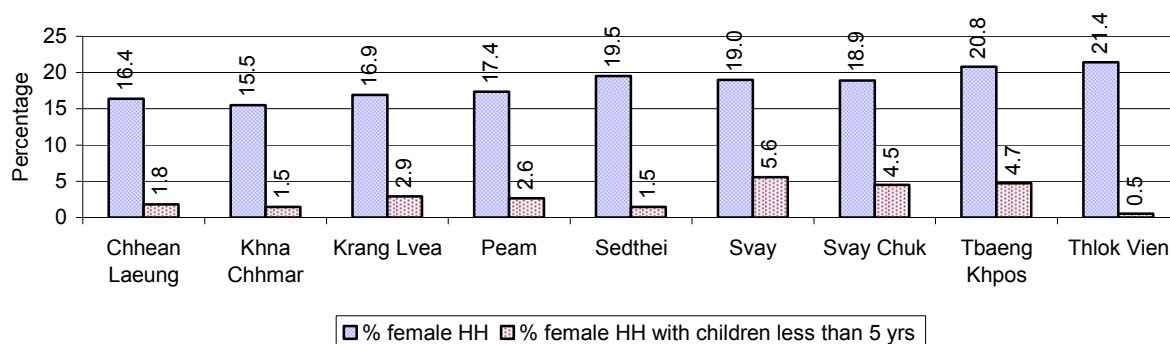
Note: Percentage of female participants in civil society is calculated as a percentage of the total population per commune. The percentage of 18-60 years old women with uncertain jobs is calculated as a percentage of the total 18-60 year old population per commune.

6.5 Female-headed Households over 3 years

Families with:	2006	2007	2008	
	%	%	%	Number
Households in which a woman is the family head	19%	20%	18%	2,654 families
Households in which a woman is the family head with children of less than 5 yrs	4%	4%	3%	454 families

Note: Calculated as a percentage of the total number of families

6.6 Percentage female-headed Households and with Children of less than 5 years old, by Commune, in 2008



Note: Calculated as a percentage of the total number of families in each commune
HH: Headed Household

7 Indigenous People in the District

7.1 Ethnic Minorities in the District over 3 years

Race of indigenous	2006		2007		2008	
	# families	# population	# families	# population	# families	# population
Phnong	0 families	0 person(s)	0 families	0 person(s)	0 families	0 person(s)
Kouy	0 families	0 person(s)	0 families	0 person(s)	0 families	0 person(s)
Stieng	0 families	0 person(s)	0 families	0 person(s)	0 families	0 person(s)
Mil	0 families	0 person(s)	0 families	0 person(s)	0 families	0 person(s)
Kroal	0 families	0 person(s)	0 families	0 person(s)	0 families	0 person(s)
Thmorn	0 families	0 person(s)	0 families	0 person(s)	0 families	0 person(s)
Khaonh	0 families	0 person(s)	0 families	0 person(s)	0 families	0 person(s)
Tompouonn	0 families	0 person(s)	0 families	0 person(s)	0 families	0 person(s)
Charay	0 families	0 person(s)	0 families	0 person(s)	0 families	0 person(s)
Kroeung	0 families	0 person(s)	0 families	0 person(s)	0 families	0 person(s)
Kavet	0 families	0 person(s)	0 families	0 person(s)	0 families	0 person(s)
Saouch	0 families	0 person(s)	0 families	0 person(s)	0 families	0 person(s)
Lun	0 families	0 person(s)	0 families	0 person(s)	0 families	0 person(s)
Kachak	0 families	0 person(s)	0 families	0 person(s)	0 families	0 person(s)
Praov	0 families	0 person(s)	0 families	0 person(s)	0 families	0 person(s)
Others	0 families	0 person(s)	0 families	0 person(s)	0 families	0 person(s)
Total	0 families	0 person(s)	0 families	0 person(s)	0 families	0 person(s)

Note: "Others" refer to other ethnic groups which are not listed.

7.2 Other Minorities in the District over 3 years

Minority	2006		2007		2008	
	# families	# population	# families	# population	# families	# population
Khmer Islamic	651 families	3,358 person(s)	566 families	2,814 person(s)	941 families	3,977 person(s)
Vietnamese	1 families	8 person(s)	1 families	16 person(s)	1 families	10 person(s)
Laos	0 families	0 person(s)	0 families	0 person(s)	0 families	6 person(s)

Note: Number of indigenous and minority population are additional data, so some village may not recorded.

SECTION C: PLANS AND PROJECTS

8 Priorities and Plans

8.1 Priorities of Commune Councils for 2009 in the District by Sector

The District Priority Activity Matrix (DPAM) data are taken from the CDPD. The DPAM is used for the District Integration Workshop (DIW), to show what kind of projects the commune has proposed in their Commune Investment Plan (CIP) for 2009. Donors, departments and other agencies then consider which projects they want to support and which projects they are not interested in. This results in Temporary Agreements between the Commune Council and the Supporter (NGO, Department, private donor, etc), as shown in table 8.2

No.	Project Name	Chhean Laeung	Khna Chhmar	Krang Lvea	Peam	Sedthei	Svay	Svay Chuk	Tbaeng Khpos	Thlok Vien	Req.Proj ect
		40701	40702	40703	40704	40705	40706	40707	40708	40709	Total
Economic											
1	Compost fertilizer training	16 Compo st-heap		10 time	12 demo	10 training	3 training	10 demo	2 training	14 Compost- heap	9
2	Chemical and pesticide application training	8 time			12 time	10 time		10 time		7 time	5
3	Mixed farming system training	4 training			6 time		3 training	10 training		7 time	5
4	IPM training						13 training				1
5	Subsidiary cropping technique training								1 training		1
6	Animal vaccination request	8 time	7 time		12 time	10 time	13 time				6
7	Animal raising training	4 training	7 time	10 training	6 time		13 training	10 training			6
8	Rice seed request			2 T	4000 Kg			5000 Kg	1000 Kg		4
9	Calf for raising request	8 Head							10 Head		2
10	Sow for raising request								15 Head		1
11	Road maintenance committee								1 training		1
12	Earth road construction		4565 m	7100 m		1 Line	5230 m			2500 m	5
13	Laterite/natural gravel road construction	1600 m	3000 m		2500 m			5710 m	3782 m		5
14	Culvert construction			3 place	2 place		65 place	1 place		2 place	5
15	Bridger construction					2 place				2 place	2
16	Laterite/natural gravel road repairing	10000 m		7500 m	7500 m	22000 m	8050 m	8000 m		2200 m	7
17	Irrigation feasibility study				6 set						1

District Data Book 2009: Development Plans and Projects

No.	Project Name	Chhean Laeung	Khna Chhmar	Krang Lvea	Peam	Sedthei	Svay	Svay Chuk	Tbaeng Khpos	Thlok Vien	Req.Proj ect
		40701	40702	40703	40704	40705	40706	40707	40708	40709	Total
18	Canal construction	1 Line			1 Line	600 m	1013 m	1 Line			6
19	Dam construction	1 place						1 place	2 gate		3
20	Water gate construction	2 place	1 place	2 place				1 place			4
21	Irrigation wells construction								2 well		1
22	Spillway construction									20 m	1
23	Water gate plug construction						1 place				1
24	Canal repairing		2500 m								1
25	Dam repairing		1 place		2 place						2
Social											
1	Family planning								2 time		1
2	Antenatal care service accessibility improvement					10 time					1
3	HIV/AIDS awareness education				12 time			10 time			2
4	Transmitted disease education and prevention	8 time									1
5	Health education service at health center			10 time							1
6	Health education on water use hygiene		7 time							7 time	2
7	Children immunization provision	7 time						10 time			2
8	Dengue fever education programme				12 time			10 time			2
9	Maternal health care service activation/creation	4 time		10 time	12 time						3
10	Latrine construction	16 toilet			60 toilet	150 toilet	52 toilet	100 toilet		7 toilet	6
11	Latrine use education		7 time							7 time	2
12	Sanitation education						13 training	10 time		7 time	3
13	Commune health center construction								1 building		1
14	Village health post construction	1 place			1 place						2
15	Patient transportation means							1 set			1

District Data Book 2009: Development Plans and Projects

No.	Project Name	Chhean Laeung 40701	Khna Chhmar 40702	Krang Lvea 40703	Peam 40704	Sedthei 40705	Svay 40706	Svay Chuk 40707	Tbaeng Khpos 40708	Thlok Vien 40709	Req.Proj ect Total
	established										
16	Water filter equipment supply							500 Container			1
17	Pump wells construction	16 well		32 well	12 well		26 well	10 well	13 well	8 well	7
18	Ring wells construction					2 well	26 well				2
19	Ponds construction				2 place	2 Pond	13 place	10 Pond	5 Pond	1 place	6
20	Pump wells repairing	7 well	14 well								2
21	Ring wells repairing		14 well							4 well	2
22	School building	3 room				3 schools					2
23	Kindergarten school construction/repair				1 place	10 schools	13 place	2 place	1 building		5
24	Motivating pupil's parents for school enrollment	8 time				10 time	7 training	10 time	2 time	7 time	6
25	School enrollment encouragement project				2 time						1
26	School materials support to poor pupils	8 time							45 person		2
27	Scholarship provision to poor pupils			364 person			158 person	200 person		53 person	4
28	Vocational training				6 training	7 training	3 training	5 training		7 time	5
29	Teacher/volunteer teacher training							1 time			1
30	Youth moral education	8 time									1
31	Food/materials support to disabled family			85 person							1
32	Food/materials support to orphan		32 person	364 person							2
NREM											
1	Environmental awareness and law education	8 time			12 time			10 time			3
2	Forestry law education								2 time		1
3	Waste dumping creation/improvement			1 place			1 place				2
Administration and Security											
1	Civil registration				6 time			10 time			2

District Data Book 2009: Development Plans and Projects

No.	Project Name	Chhean Laeung 40701	Khna Chhmar 40702	Krang Lvea 40703	Peam 40704	Sedthei 40705	Svay 40706	Svay Chuk 40707	Tbaeng Khpos 40708	Thlok Vien 40709	Req.Proj ect Total
	encouragement										
2	Land law dissemination	8 time	7 time	10 time	12 time	10 time	2 training	10 time	2 time	7 time	9
3	Provision of land titles/certificates					10 time	1489 doc				2
4	Social land concession project					10 ha					1
5	Gangs gathering educated for local security					3 time					1
6	Drug business/use prevention				12 time						1
7	Law/regulation dissemination	8 time	7 time		12 time		13 training	10 time		7 time	6
8	Human right and related law education	8 time			12 time			10 time			3
9	Water pump group establishment								1 set		1
Gender											
1	Gender mainstreaming concept training	8 time			6 time			10 time			3
2	Gender mainstreaming among local people		7 time								1
3	Gender concept/equity mainstreaming									7 time	1
4	Women capacity building for social participation				6 time						1
5	Woman and children's rights dissemination				6 time			10 time			2
6	Women vocational training			361 person							1
7	Law against domestic violence dissemination	8 time	7 time	10 time	6 time	10 time	13 training	10 time		7 time	8
8	Domestic violence education leaflet distribution								3 time		1
9	Swindle trick of broker prevention education	8 time						10 time			2

Source: CDPD – District Priority Matrix

8.2 Temporary Agreements by Commune, for 2009²

At the District Integration Workshop (DIW) the Supporters (donors, agencies, private donors, NGOs, etc.) identify which projects/activities they would like to support or they put forward their own projects to be implemented in a particular commune. Once there is agreement between Commune Councils and Supporters on specific projects a **Temporary Agreement** is signed by the commune and the Supporter to show their mutual commitment to the identified projects/activities.

It is important to keep in mind that such Temporary Agreements do not necessarily result in implementation.

8.2.1 Temporary Agreements for 2009 as per DIW 2008 for Commune: Chhean Laeung

Commune GIS	Commune	Temporary Agreements				Supporter	Funding Source	Listed in CIP befor DIW
		Project Name	Quantity	Unit	Est.Cost (K.Riels)			
Economic								
40701	Chhean Laeung	Animal raising training	4	training	800	Lutheran World Federation/Department for world Service		✓
40701	Chhean Laeung	Dam construction	1	place	35000	Lutheran World Federation/Department for world Service		✓
40701	Chhean Laeung	Animal vaccination request	8	time	2240	Lutheran World Federation/Department for world Service		✓
40701	Chhean Laeung	Chemical fertilizer technique extension	8	time	800	Lutheran World Federation/Department for world Service		☐
40701	Chhean Laeung	Mixed farming system training	4	training	800	Lutheran World Federation/Department for world Service		✓
40701	Chhean Laeung	Compost fertilizer training	8	Compost-heap	1120	Lutheran World Federation/Department for world Service		✓
40701	Chhean Laeung	Anlong Trach's dam repairing	1	place	18500	Lutheran World Federation/Department for world Service		☐
40701	Chhean	Cash credit	2	place	2450	Lutheran World		☐

² Not all the data from the CDPD has been translated to English, this has resulted in some cells in the TA tables being blank.

District Data Book 2009: Development Plans and Projects

Commune GIS	Commune	Temporary Agreements				Supporter	Funding Source	Listed in CIP before DIW
		Project Name	Quantity	Unit	Est.Cost (K.Riels)			
	Laeung					Federation/Department for world Service		
Social								
40701	Chhean Laeung	Pump wells repair	6	well	2500	Department of Rural Development		✓
40701	Chhean Laeung	Spin wells construction	1	well	2000	Lutheran World Federation/Department for world Service		□
40701	Chhean Laeung	Pump wells construction	3	well	18000	Lutheran World Federation/Department for world Service		✓
40701	Chhean Laeung	Water transport cart support	4	set	800	Lutheran World Federation/Department for world Service		□
40701	Chhean Laeung	School materials support to poor pupils	8	time	800	Lutheran World Federation/Department for world Service		✓
40701	Chhean Laeung	Transmitted disease education and prevention	8	time	1800	Lutheran World Federation/Department for world Service		✓
40701	Chhean Laeung	Latrine construction	16	toilet	3200	Lutheran World Federation/Department for world Service		✓
40701	Chhean Laeung	Khmer's cultures and customs dissemination	1	time	480	Department of Culture and Fine Arts		□
NREM								
40701	Chhean Laeung	Environmental law dissemination	8	time	800	Lutheran World Federation/Department for world Service		□
40701	Chhean Laeung	Environmental awareness and law education	1	training	300	Department of Environment		✓
Administration and Security								
40701	Chhean Laeung	Human right and related law education	5	time	800	Lutheran World Federation/Department for		✓

District Data Book 2009: Development Plans and Projects

Commune GIS	Commune	Temporary Agreements				Supporter	Funding Source	Listed in CIP before DIW
		Project Name	Quantity	Unit	Est.Cost (K.Riels)			
						world Service		
40701	Chhean Laeung	Land law dissemination	8	time	800	Lutheran World Federation/Department for world Service		✓
40701	Chhean Laeung	Community forest land demarcation	1	time	800	Lutheran World Federation/Department for world Service		□
40701	Chhean Laeung	Social land concession project formulation	450	ha	120	Lutheran World Federation/Department for world Service		□
Gender								
40701	Chhean Laeung	Law against domestic violence dissemination	5	time	800	Lutheran World Federation/Department for world Service		✓
40701	Chhean Laeung	Swindle trick of broker prevention education	5	time	800	Lutheran World Federation/Department for world Service		✓
40701	Chhean Laeung	Gender mainstreaming concept training	5	time	800	Lutheran World Federation/Department for world Service		✓

8.2.2 Temporary Agreements for 2009 as per DIW 2008 for Commune: Khna Chhmar

Commune GIS	Commune	Temporary Agreements				Supporter	Funding Source	Listed in CIP before DIW
		Project Name	Quantity	Unit	Est.Cost (K.Riels)			
Economic								
40702	Khna Chhmar	Earth road repairing	4565	m	40000	Department of Rural Development		<input type="checkbox"/>
40702	Khna Chhmar	Animal raising training	1	training	400	World Vision International - Cambodia		<input checked="" type="checkbox"/>
Social								
40702	Khna Chhmar	Khmer's cultures and customs dissemination	1	time	480	Department of Culture and Fine Arts		<input type="checkbox"/>

Commune GIS	Commune	Temporary Agreements				Supporter	Funding Source	Listed in CIP before DIW
		Project Name	Quantity	Unit	Est.Cost (K.Riels)			
40702	Khna Chhmar	Latrine use education	2	training	800	World Vision International - Cambodia		✓
40702	Khna Chhmar	Health education on water use hygiene	1	training	400	World Vision International - Cambodia		✓
Gender								
40702	Khna Chhmar	Gender mainstreaming among local people	1	training	400	World Vision International - Cambodia		✓
40702	Khna Chhmar	Law against domestic violence dissemination	1	training	400	World Vision International - Cambodia		✓

8.2.3 Temporary Agreements for 2009 as per DIW 2008 for Commune: Krang Lvea

Commune GIS	Commune	Temporary Agreements				Supporter	Funding Source	Listed in CIP befor DIW
		Project Name	Quantity	Unit	Est.Cost (K.Riels)			
Economic								
40703	Krang Lvea	Animal raising training	10	training	3200	World Vision International - Cambodia		✓
40703	Krang Lvea	Compost fertilizer training	10	time	4000	World Vision International - Cambodia		✓
Social								
40703	Krang Lvea	Scholarship provision to poor pupils	64	person	2000	World Vision International - Cambodia		✓
40703	Krang Lvea	Maternal health care service activation/creation	400	person	3000	World Vision International - Cambodia		✓
40703	Krang Lvea	Health education service at health center	10	time	4000	World Vision International - Cambodia		✓
40703	Krang Lvea	Pump wells construction	6	well	250	Department of Rural Development		✓
NREM								
40703	Krang Lvea	Water pollution and harmful waste management dissemination	1	training	400	Department of Environment		☐
Gender								

Commune GIS	Commune	Temporary Agreements				Supporter	Funding Source	Listed in CIP before DIW
		Project Name	Quantity	Unit	Est.Cost (K.Riels)			
40703	Krang Lvea	Women vocational training	10	training	5000	World Vision International - Cambodia		✓
40703	Krang Lvea	Law against domestic violence dissemination	10	time	4000	World Vision International - Cambodia		✓

8.2.4 Temporary Agreements for 2009 as per DIW 2008 for Commune: Peam

Commune GIS	Commune	Temporary Agreements				Supporter	Funding Source	Listed in CIP before DIW
		Project Name	Quantity	Unit	Est.Cost (K.Riels)			
Economic								
40704	Peam	Compost fertilizer training	12	demo	480	Lutheran World Federation/Department for world Service		✓
40704	Peam	Mixed farming system training	6	training	2400	Lutheran World Federation/Department for world Service		✓
40704	Peam	Animal vaccination request	12	time	3360	Lutheran World Federation/Department for world Service		✓
40704	Peam	Animal raising training	6	time	2400	Lutheran World Federation/Department for world Service		✓
40704	Peam	Irrigation feasibility study	6	set	6000	Lutheran World Federation/Department for world Service		✓
40704	Peam	Chemical and pesticide application training	12	time	2400	Lutheran World Federation/Department for world Service		✓
40704	Peam	Culvert construct	2	place	4000	Lutheran World Federation/Department for world Service		✓
Social								
40704	Peam	Latrine construction	30	toilet	18000	Lutheran World		✓

District Data Book 2009: Development Plans and Projects

Commune GIS	Commune	Temporary Agreements				Supporter	Funding Source	Listed in CIP befor DIW
		Project Name	Quantity	Unit	Est.Cost (K.Riels)			
						Federation/Department for world Service		
40704	Peam	Vocational training	3	training	3000	Lutheran World Federation/Department for world Service		✓
40704	Peam	HIV/AIDS awareness education	12	training	120	Lutheran World Federation/Department for world Service		✓
40704	Peam	Pump wells repair	3	well	1500	Department of Rural Development		□
40704	Peam	Maternal health care service activation/creation	12	time	120	Lutheran World Federation/Department for world Service		✓
NREM								
40704	Peam	Environmental law dissemination	11	time	220	Lutheran World Federation/Department for world Service		□
40704	Peam	Environmental awareness and law education	1	training	300	Department of Environment		✓
Administration and Security								
40704	Peam	Land law dissemination	12	time	230	Lutheran World Federation/Department for world Service		✓
40704	Peam	Drug business/use prevention	12	time	300	Lutheran World Federation/Department for world Service		✓
Gender								
40704	Peam	Woman and children's rights dissemination	6	time	2000	Lutheran World Federation/Department for world Service		✓
40704	Peam	Gender mainstreaming concept training	6	time	2000	Lutheran World Federation/Department for world Service		✓
40704	Peam	Law against domestic violence	6	time	2000	Lutheran World		✓

Commune GIS	Commune	Temporary Agreements				Supporter	Funding Source	Listed in CIP before DIW
		Project Name	Quantity	Unit	Est.Cost (K.Riels)			
		dissemination				Federation/Department for world Service		

8.2.5 Temporary Agreements for 2009 as per DIW 2008 for Commune: Sedthei

Commune GIS	Commune	Temporary Agreements				Supporter	Funding Source	Listed in CIP before DIW
		Project Name	Quantity	Unit	Est.Cost (K.Riels)			
Economic								
40705	Sedthei	Chemical and pesticide application training	1	schools	400	Department of Agriculture Forestry and Fisheries		✓
40705	Sedthei	Compost fertilizer training	10	training	4000	Lutheran World Federation/Department for world Service		✓
40705	Sedthei	Animal vaccination request	10	time	40000	Lutheran World Federation/Department for world Service		✓
40705	Sedthei	Laterite road repairing	8000	m	40000	Department of Rural Development		✓
Social								
40705	Sedthei	Latrine construction	150	toilet	90000	Lutheran World Federation/Department for world Service		✓
NREM								
40705	Sedthei	Environmental law dissemination	1	training	300	Department of Environment		☐

8.2.6 Temporary Agreements for 2009 as per DIW 2008 for Commune: Svay

Commune GIS	Commune	Temporary Agreements				Supporter	Funding Source	Listed in CIP befor DIW
		Project Name	Quantity	Unit	Est.Cost (K.Riels)			
Economic								
40706	Svay	Animal vaccination request	7	time	2000	Lutheran World Federation/Department for world Service		✓
40706	Svay	Livestock raising training	1	training	400	World Vision International - Cambodia		☐
40706	Svay	Agriculture technique training	1	training	400	World Vision International - Cambodia		☐
40706	Svay	Culvert construct	21	place	21000	Lutheran World Federation/Department for world Service		✓
40706	Svay	Mixed farming system training	3	training	1200	Lutheran World Federation/Department for world Service		✓
40706	Svay	Irrigated canal construction	1	place	5000	Lutheran World Federation/Department for world Service		✓
40706	Svay	IPM training	7	training	2800	Lutheran World Federation/Department for world Service		✓
40706	Svay	Compost fertilizer training	1	training	350	World Vision International - Cambodia		✓
40706	Svay	Animal raising training	7	training	2500	Lutheran World Federation/Department for world Service		✓
40706	Svay	Earth road construction	2	Line	5000	Lutheran World Federation/Department for world Service		✓
Social								
40706	Svay	Ring wells construction	15	well	9000	Lutheran World Federation/Department for world Service		✓
40706	Svay	Latrine construction	28	toilet	16800	Lutheran World Federation/Department for world Service		✓
40706	Svay	Pump wells construction	2	well	2000	Lutheran World Federation/Department for world Service		✓
40706	Svay	Scholarship provision to poor pupils	1	time	5000	Lutheran World Federation/Department for world Service		✓
40706	Svay	Motivating pupil's parents for school enrollment	1	training	400	World Vision International - Cambodia		✓
40706	Svay	Sanitation education	7	training	2500	Lutheran World Federation/Department for world Service		✓

Commune GIS	Commune	Temporary Agreements				Supporter	Funding Source	Listed in CIP befor DIW
		Project Name	Quantity	Unit	Est.Cost (K.Riels)			
40706	Svay	Vocational training	3	training	1200	Lutheran World Federation/Department for world Service		✓
40706	Svay	Water pollution and harmful waste management training	1	training	300	Lutheran World Federation/Department for world Service		□
40706	Svay	Skill training	1	training	400	World Vision International - Cambodia		□
40706	Svay	Pond construction	1	place	10000	Lutheran World Federation/Department for world Service		✓
Administration and Security								
40706	Svay	Land law dissemination	2	training	800	Lutheran World Federation/Department for world Service		✓
Gender								
40706	Svay	Domestic violence law dissemination	1	training	500	World Vision International - Cambodia		□
40706	Svay	Law against domestic violence dissemination	7	training	2800	Lutheran World Federation/Department for world Service		✓

8.2.7 Temporary Agreements for 2009 as per DIW 2008 for Commune: Svay Chuk

Commune GIS	Commune	Temporary Agreements				Supporter	Funding Source	Listed in CIP befor DIW
		Project Name	Quantity	Unit	Est.Cost (K.Riels)			
Economic								
40707	Svay Chuk	Mixed farming system training	10	training	4000	Lutheran World Federation/Department for world Service		✓
40707	Svay Chuk	Compost fertilizer training	10	training	4000	Lutheran World Federation/Department for world Service		✓
40707	Svay Chuk	Laterite road repairing	7	km	30000	Department of Rural Development		✓
40707	Svay Chuk	Chemical and pesticide application training	10	training	4000	Lutheran World Federation/Department for world Service		✓
40707	Svay	Animal raising training	10	training	4000	Lutheran World		✓

District Data Book 2009: Development Plans and Projects

Commune GIS	Commune	Temporary Agreements				Supporter	Funding Source	Listed in CIP before DIW
		Project Name	Quantity	Unit	Est.Cost (K.Riels)			
	Chuk					Federation/Department for world Service		
Social								
40707	Svay Chuk	Sanitation education	10	training	4000	Lutheran World Federation/Department for world Service		✓
40707	Svay Chuk	Vocational training	3	person	1000	Lutheran World Federation/Department for world Service		✓
40707	Svay Chuk	Pump wells construction	2	well	1200	Lutheran World Federation/Department for world Service		✓
40707	Svay Chuk	Latrine construction	30	toilet	18000	Lutheran World Federation/Department for world Service		✓
40707	Svay Chuk	Pond construction	1	Pond	5000	Lutheran World Federation/Department for world Service		✓
40707	Svay Chuk	HIV/AIDS awareness education	10	training	4000	Lutheran World Federation/Department for world Service		✓
40707	Svay Chuk	Children immunization provision	10	time	4000	Department of Health		✓
40707	Svay Chuk	Scholarship provision to poor pupils	1	person	1000	Lutheran World Federation/Department for world Service		✓
NREM								
40707	Svay Chuk	Environmental law dissemination	8	training	320	Lutheran World Federation/Department for world Service		□
40707	Svay Chuk	Environmental awareness and law education	1	training	300	Department of Environment		✓
Administration and Security								
40707	Svay	Land law dissemination	10	training	4000	Lutheran World		✓

Commune GIS	Commune	Temporary Agreements				Supporter	Funding Source	Listed in CIP before DIW
		Project Name	Quantity	Unit	Est.Cost (K.Riels)			
	Chuk					Federation/Department for world Service		
Gender								
40707	Svay Chuk	Law against domestic violence dissemination	10	training	2000	Lutheran World Federation/Department for world Service		✓
40707	Svay Chuk	Woman and children's rights dissemination	5	training	2000	Lutheran World Federation/Department for world Service		✓
40707	Svay Chuk	Gender mainstreaming concept training	5	training	2000	Lutheran World Federation/Department for world Service		✓
40707	Svay Chuk	Swindle trick of broker prevention education	5	training	1500	Lutheran World Federation/Department for world Service		✓

8.2.8 Temporary Agreements for 2009 as per DIW 2008 for Commune: Tbaeng Khpos

Commune GIS	Commune	Temporary Agreements				Supporter	Funding Source	Listed in CIP befor DIW
		Project Name	Quantity	Unit	Est.Cost (K.Riels)			
Economic								
40708	Tbaeng Khpos	Road maintenance committee	1	training	400	Lutheran World Federation/Department for world Service		✓
40708	Tbaeng Khpos	Compost fertilizer training	2	training	800	Lutheran World Federation/Department for world Service		✓
40708	Tbaeng Khpos	Laterite road construction	5	km	20000	Department of Rural Development		✓
Social								
40708	Tbaeng Khpos	Pump wells repair	3	well	2400	Department of Rural Development		☐
40708	Tbaeng	School materials support to poor	45	person	500	Lutheran World		✓

Commune GIS	Commune	Temporary Agreements				Supporter	Funding Source	Listed in CIP before DIW
		Project Name	Quantity	Unit	Est.Cost (K.Riels)			
	Khpos	pupils				Federation/Department for world Service		
40708	Tbaeng Khpos	Pump wells construction	13	well	5000	Lutheran World Federation/Department for world Service		✓
Administration and Security								
40708	Tbaeng Khpos	Land law dissemination	2	time	800	Lutheran World Federation/Department for world Service		✓
Gender								
40708	Tbaeng Khpos	Domestic violence education leaflet distribution	3	time	1200	Lutheran World Federation/Department for world Service		✓

8.2.9 Temporary Agreements for 2009 as per DIW 2008 for Commune: Thlok Vien

Commune GIS	Commune	Temporary Agreements				Supporter	Funding Source	Listed in CIP befor DIW
		Project Name	Quantity	Unit	Est.Cost (K.Riels)			
Economic								
40709	Thlok Vien	Chemical and pesticide application training	1	time	400	World Vision International - Cambodia		✓
40709	Thlok Vien	Mixed farming system training	1	training	400	World Vision International - Cambodia		✓
Social								
40709	Thlok Vien	Khmer's cultures and customs dissemination	1	time	120	Department of Culture and Fine Arts		☐
40709	Thlok Vien	Sanitation education	1	time	400	World Vision International - Cambodia		✓
40709	Thlok Vien	Health education on water use hygiene	1	time	400	World Vision International - Cambodia		✓
40709	Thlok Vien	Motivating pupil's parents for school enrollment	1	time	4000	World Vision International - Cambodia		✓

District Data Book 2009: Development Plans and Projects

40709	Thlok Vien	Scholarship provision to poor pupils	1	time	1000	World Vision International - Cambodia		✓
40709	Thlok Vien	Pump wells construction	1	well	2000	Department of Rural Development		✓
40709	Thlok Vien	Vocational training	2	training	4000	World Vision International - Cambodia		✓
Gender								
40709	Thlok Vien	Gender concept/equity mainstreaming	1	training	350	World Vision International - Cambodia		✓
40709	Thlok Vien	Law against domestic violence dissemination	1	training	250	World Vision International - Cambodia		✓

Source: CDPD, District Level Detail TA resulting from DIW

8.3 Outputs, estimated and actual costs of C/S Fund Projects between 2005 and 2008, by Commune

Commune	Project Type	Budget Year	Output		Quantity	Unit	Unit Cost MR	
			Description	Type			Estimate	Actual
Chhean Laeung	Rural Domestic Water Supplies	2005	Pond with no filter	New	2	Place	21.43	20.57
Chhean Laeung	Rural Transport	2006	Laterite road	Upgrade	3.3	Km	22.46	28.20
Chhean Laeung	Rural Transport	2006	Double pipe culvert	New	1	Place	5.95	28.20
Chhean Laeung	Rural Transport	2007	Laterite road	Upgrade	3.06	Km	26.54	26.30
Chhean Laeung	Rural Transport	2008	Triple pipe culvert	New	2	Place	20.65	25.00
Chhean Laeung	Rural Transport	2008	Single pipe culvert	New	0	Place	4.53	25.00
Khna Chhmar	Irrigation	2005	Single cell box culvert with gate	New	2	Place	26.16	19.36
Khna Chhmar	Rural Transport	2006	Earth road	Repair	0.2	Km	5.01	34.20
Khna Chhmar	Rural Transport	2006	Double pipe culvert	New	2	Place	8.27	34.20
Khna Chhmar	Rural Transport	2006	Triple pipe culvert	New	2	Place	15.22	34.20
Khna Chhmar	Rural Transport	2006	Single pipe culvert	New	4	Place	6.97	34.20
Khna Chhmar	Rural Transport	2007	Single pipe culvert	New	1	Place	2.48	29.80
Khna Chhmar	Rural Transport	2007	Laterite road	Upgrade	2.632	Km	27.53	29.80
Khna Chhmar	Rural Transport	2008	Laterite road	Repair	1.556	Km	30.05	30.06
Krang Lvea	Irrigation	2005	Single cell box culvert with gate	New	1	Place	22.23	20.53
Krang Lvea	Rural Transport	2005	Triple pipe culvert	New	1	Place	7.14	6.78
Krang Lvea	Irrigation	2006	Single cell box culvert with gate	New	1	Place	31.81	31.00
Krang Lvea	Irrigation	2007	Single cell box culvert with gate	New	1	Place	32.39	32.19
Krang Lvea	Rural Transport	2008	Laterite road	Repair	2.264	Km	32.51	32.51
Peam	Rural Transport	2005	Single pipe culvert	New	1	Place	1.60	17.37
Peam	Rural Transport	2005	Laterite road	Repair	1.05	Km	24.20	17.37
Peam	Rural Transport	2006	Single pipe culvert	New	1	Place	1.71	31.22
Peam	Rural Transport	2006	Concrete bridge, single span	New	1	Place	35.87	31.22
Peam	Rural Transport	2007	Laterite road	Upgrade	3.75	Km	36.60	36.35
Peam	Rural Transport	2008	Single pipe culvert	New	1	Place	8.39	28.50
Peam	Rural Transport	2008	Triple pipe culvert	New	2	Place	20.06	28.50
Sedthei	Rural Transport	2005	Laterite road	Repair	2.85	Km	23.73	22.07
Sedthei	Rural Transport	2006	Laterite road	Upgrade	3.52	Km	31.56	31.10
Sedthei	Irrigation	2007	Single cell box culvert with gate	New	1	Place	28.70	28.50
Sedthei	Irrigation	2008	Small water gate	New	1	Place	28.81	28.80
Svay	Irrigation	2005	Small water gate	New	1	Place	4.58	23.28
Svay	Irrigation	2005	Single cell box culvert with gate	New	2	Place	24.61	23.28
Svay	Rural Transport	2006	Laterite road	Upgrade	1.786	Km	34.82	40.09

Commune	Project Type	Budget Year	Output		Quantity	Unit	Unit Cost MR	
			Description	Type			Estimate	Actual
Svay	Rural Transport	2006	Single pipe culvert	New	2	Place	2.72	40.09
Svay	Rural Transport	2007	Laterite road	Upgrade	2.87	Km	31.58	31.20
Svay	Rural Transport	2008	Laterite road	Repair	1.319	Km	33.13	33.13
Svay Chuk	Irrigation	2005	Earth dam	Repair	0.17	Km	2.39	16.05
Svay Chuk	Irrigation	2005	Single cell box culvert with gate	New	1	Place	12.84	16.05
Svay Chuk	Irrigation	2005	Canal	Repair	0.18	Km	2.53	16.05
Svay Chuk	Irrigation	2005	Single pipe Culvert with gate	Repair	1	Place	3.63	16.05
Svay Chuk	Irrigation	2006	Small water gate	New	2	Place	10.17	42.87
Svay Chuk	Irrigation	2006	Single cell box culvert with gate	New	1	Place	33.09	42.87
Svay Chuk	Rural Transport	2007	Laterite road	Upgrade	1.751	Km	33.03	32.80
Svay Chuk	Rural Transport	2008	Double pipe culvert	New	0	Place	4.38	31.47
Svay Chuk	Rural Transport	2008	Laterite road	Repair	1.169	Km	23.06	31.47
Svay Chuk	Rural Transport	2008	Single pipe culvert	New	2	Place	4.04	31.47
Tbaeng Khpos	Rural Transport	2005	Laterite road	New	1.5	Km	22.26	26.00
Tbaeng Khpos	Rural Transport	2005	Single pipe culvert	New	3	Place	5.11	26.00
Tbaeng Khpos	Rural Transport	2006	Laterite road	Upgrade	2.82	Km	35.05	33.50
Tbaeng Khpos	Rural Transport	2007	Laterite road	Upgrade	3.312	Km	31.89	31.40
Tbaeng Khpos	Rural Transport	2008	Laterite road	Repair	2.064	Km	27.12	34.06
Thlok Vien	Irrigation	2005	Single cell box culvert with gate	New	1	Place	22.03	21.00
Thlok Vien	Irrigation	2006	Single cell box culvert with gate	New	1	Place	31.14	30.00
Thlok Vien	Rural Transport	2007	Laterite road	Upgrade	3.325	Km	29.83	29.62
Thlok Vien	Rural Transport	2008	Single pipe culvert	New	0	Place	2.53	27.09
Thlok Vien	Rural Transport	2008	Laterite road	Repair	1.206	Km	24.57	27.09

Source: PID

8.4 Total Expenditure on C/S Fund Projects by sector and commune between 2005 and 2008

Sector	Total Cost in Million Riels								
	Chhean Laeung	Khna Chhmar	Krang Lvea	Peam	Sedthei	Svay	Svay Chuk	Tbaeng Khpos	Thlok Vien
Irrigation		19.36	83.72		57.30	23.28	58.91		51.00
Rural Domestic Water Supplies	20.57								
Rural Transport	79.50	94.06	39.29	113.44	53.17	104.42	64.27	124.95	56.71

Source: PID

8.5 Actual 2009 C/S Fund projects by Commune

Commune	Project Type	Project Output		Quantity	Unit	Fund Source (Riels)		
		Description	Type			Total	C/S	Local Contribution
Chhean Laeung	Rural Transport	Laterite road	Repair	1.934	km	4,417,300	3,685,100	732,200
Khna Chhmar	Irrigation	Earth dam	Repair	0.056	km	40,447,800	40,000,000	447,800
Khna Chhmar	Irrigation	Single pipe culvert 0.8m diameter with stop logs	New	1	Place	40,447,800	40,000,000	447,800
Khna Chhmar	Rural Transport	Laterite road	Repair	0.656	km	33,552,200	33,000,000	552,200
Krang Lvea	Rural Transport	Laterite road	Repair	2.53	km	45,900,000	45,000,000	900,000
Peam	Rural Transport	Laterite road	Repair	0.75	km	42,131,100	41,273,100	858,000
Peam	Rural Transport	Laterite road	Repair	1.596	km	42,131,100	41,273,100	858,000
Sedthei	Rural Transport	Laterite road	Repair	1.271	km	63,000,000	62,000,000	1,000,000
Sedthei	Rural Transport	Single pipe culvert 0.6m diameter	New	2	Place	63,000,000	62,000,000	1,000,000
Sedthei	Rural Transport	Laterite road	Repair	0.689	km	63,000,000	62,000,000	1,000,000
Svay	Rural Transport	Laterite road	Repair	0.4	km	876,035,000	875,035,000	1,000,000
Svay	Rural Transport	Laterite road	Repair	0.239	km	876,035,000	875,035,000	1,000,000
Svay	Rural Transport	Laterite road	Repair	1.439	km	876,035,000	875,035,000	1,000,000
Svay Chuk	Rural Transport	Laterite road	Repair	0.4	km	38,259,400	37,500,000	759,400
Svay Chuk	Rural Transport	Laterite road	Repair	1.175	km	38,259,400	37,500,000	759,400
Svay Chuk	Rural Transport	Triple pipe culvert 1.0m diameter	New	1	Place	38,259,400	37,500,000	759,400
Tbaeng Khpos	Rural Transport	Laterite road	Repair	2.255	km	34,520,400	33,750,000	770,400
Thlok Vien	Rural Transport	Laterite road	Repair	0.61	km	35,900,000	35,200,000	700,000
Thlok Vien	Rural Transport	Laterite road	Repair	1.665	km	35,900,000	35,200,000	700,000

Source: PID

9 District level Projects from 2006 to 2009

District Initiative Projects (DIPs) are funded by Danida, DFID and PSDD (UNDP, DFID and SIDA).

Funding for 2006-2008

Between 2006 and 2008 there were 14 provinces funded by PSDD and 10 by Danida and DFID. The list of provinces and who funded these is below

Danida and DFID funded DIPs:

Kampong Cham	Kampong Speu	Koh Kong	Kratie	Monduliri
Pursat	Ratanakiri	Siem Reap	Sihanoukville	Kep

PSDD funded DIPs:

Banteay Meanchey	Battambang	Kampong Chhnang	Kandal	Phnom Penh
Prey Veng	Svay Rieng	Takeo	Kampong Thom	Preah Vihear
Stung Treng	Kampot	Oddar Meanchey	Pailin	

Funding for 2009

In 2009 there was a change to the number of provinces funded by the two streams. Danida and DFID were still funding the same 10 provinces they had been funding the previous three years, but two more provinces were added *Kampong Thom and Kampot*. Now PSDD funds 12 provinces and Danida and DFID fund 12.

9.1 District Initiative Infrastructure Projects from 2006 to 2009

9.1.1 District Initiative Infrastructure Projects for 2006 to 2008

No District Initiative Infrastructure Projects were implemented in this district for 2006-2008

9.1.2 District Initiative Infrastructure Projects in 2009

No District Initiative Infrastructure Projects have been implemented in this district for 2009

9.2 District Initiative Service Projects from 2006 to 2009

9.2.1 District Initiative Service Projects for 2006 to 2008

No District Initiative Service Projects were implemented in this district for 2006-2008

9.2.2 District Initiative Service Projects in 2009

No District Initiative Service Projects have been implemented in this district for 2009

9.3 Inter Commune Council Projects in 2008 and 2009

9.3.1 ICC Projects in 2008

Districts	Project Location	Beneficiary Commune/ Sangkat	Outputs	Project Size	Unit	Contract Cost	Fund Sources	
							ICC Fund	Community
Tuek Phos	Chaong Maong, Akphi Wat	Chaong Maong, Akphi Wat	Bridge construction	1	Unit	\$24,156.00	\$24,055.00	\$101.00
			Laterite road upgrade	119	Metre			
Total for Tuek Phos						\$24,156.00	\$24,055.00	\$101.00
Baribour	AngchagnRong, Popel	AngchagnRong,Popel,PechchangVa,KhonRong	Road culvert construction	5	Unit	\$35,810.00	\$35,780.00	\$30.00
			Laterite road upgrade	3,682	Metre			
Total for Baribour						\$35,810.00	\$35,780.00	\$30.00
Samaki Meanchey	Sethey, Thlokvien	Sethey,Thlok Vien, Tbeng Khpuos, Svay, Kreang Lovea, Khnar Chhmar	Road culvert construction	6	Unit	\$31,068.00	\$30,978.00	\$90.00
			Laterite road upgrade	5,194	Metre			
Total Samkimeanchhey						\$31,068.00	\$30,978.00	\$90.00
Rolea B'ier	Prasneb, Banteay Preal	Prasneb, Banteay Preal, Pongro, Krang Leav	Road culvert construction	4	Unit	\$30,130.00	\$30,000.00	\$130.00
			Laterite road upgrade	2,068	Metre			
Total for Rolea B'ier						\$30,130.00	\$30,000.00	\$130.00
Kampong Tralach	Kampong Tralach, Lonwek	Kampong Tralach, Lonwek, Ampil Tik, Chresh	Twin road culvert	3	Unit	\$32,786.00	\$32,586.00	\$200.00
			Laterite road upgrade	4,045	Metre			
Total for Kampong Tralach						\$32,786.00	\$32,586.00	\$200.00
Total for Kampong Chhnang Province						\$153,950.00	\$153,399.00	\$551.00

9.3.2 ICC Projects in 2009

Districts	Project Location	Beneficiary Commune/ Sangkat	Outputs	Project Size	Unit	Contract Cost	Fund Sources	
							ICC Fund	Community
Samaki Meanchey	Sethey, Thlork Vean	Sethey, Thlork Vean, Khnar Chmar, Kraing Lvea, Tbeng Khpos	New Bridge	13	Meter	\$26,337.00	\$26,287.00	\$50.00
			Culvert	1	Place			
			Laterite road upgrade	570	Meter			
Total for Samaki Meanchey						\$26,337.00	\$26,287.00	\$50.00
Kampong Tralach	Chhouk Sar, Thmor Ith	Chhouk Sar, Thmar Ith, Ta Ches, Peany, Ou Russey	Laterite road upgrade	2,700	Meter	\$24,689.36	\$24,624.36	\$65.00
			Culverts	10	Place			
			New Bridge	1	Place			
	Seb, Chhouk Sar	Seb, Chhouk Sar, Toek Hout, Chouen Kriev	Laterite road upgrade	8,977	Meter	\$32,147.81	\$31,947.81	\$200.00
			Culverts	8	Place			
Total Kampong Tralach						\$56,837.17	\$56,572.17	\$265.00
Boribor	Pich Changvar, Trapeang Chan	Pich Changvar, Trapeang Chan, Punley, Popel, Chhnok tru	Laterite road upgrade	3,450	Meter	\$26,995.00	\$26,945.00	\$50.00
			Culverts	1	Place			
Total for Boribor						\$26,995.00	\$26,945.00	\$50.00
Touek Phos	Cheab	Cheab, Khlong Popok, Akphivath, Tang Krasaing	New Spillway	37	Meter	\$50,580.00	\$30,341.00	\$20,239.00
			Earth Dike Upgrade	1,400	Meter			
			Canal Rehabilitation	1,695	Meter			
			Concrete Dike	2	Place			
Total for Kampong Tralach						\$50,580.00	\$30,341.00	\$20,239.00
Total for Kampong Chhnang						\$160,749.17	\$140,145.17	\$20,604.00

Source: ICC project, Ministry of Interior (DoLA), -UNDP project for Local Governance – DDLG

9.4 Other Projects in 2008 and 2009

9.4.1 RPRP

There are no RPRP projects being implemented in this district or province at this time. The RPRP is only being implemented in Svay Rieng and Prey Veng

9.4.1.1 RPRP Projects from 2006 to 2008

No RPRP projects in this district at this time

9.4.1.2 RPRP Projects in 2009

No RPRP projects in this district at this time

9.4.2 Seth Korma

9.4.2.1 Seth Koma 2007

There are no Seth Korma projects being implemented in this district or province at this time.

Source: UNICEF

9.4.2.2 Seth Koma 2008

There are no Seth Korma projects being implemented in this district or province at this time.

Source: UNICEF

9.4.2.3 Seth Koma 2009

There are no Seth Korma projects being implemented in this district or province at this time.

Source: UNICEF

SECTION D: SERVICES AND ORGANIZATIONS

10 Infrastructure

10.1 Length of and Expenditure on Roads in 2008, by District

Roads	KCH	Kampong Chhnang	Boribor	Roleap Ear	Teuk Phos	Kapong Leng	Choul Kiri	Kampong Tralach	Samaky Meanchey
Length of paved road in the district	148	28	30	38	10	0	0	33	9
Length of unpaved roads in the district	235	51	6	56	41	32	0	39	11
Amount spent on construction of roads in 2008 (\$)	664,381	252,250	0	299,684	112,447	0	0	0	0
Amount spent on repair and rehabilitation of roads in 2008 (\$)	433,793	52,986	86,086	77,872	104,578	0	0	86,055	26,217

Note 1: Please note that these data are not necessarily complete or correct. The data are derived from government agencies at provincial and district level which used different recording systems, did not always have complete data or were, sometimes, less than willing to share their data.

Note 2: Please be aware that these data are incomplete due to the fact that the amounts for the construction, repair and rehabilitation recorded reflect only funds provided by the government, not the contributions by any other parties.

10.2 Scale of and Expenditure on Irrigation in 2008, by District

Irrigation	KCH	Kampong Chhnang	Boribor	Roleap Ear	Teuk Phos	Kapong Leng	Choul Kiri	Kampong Tralach	Samaky Meanchey
Number of irrigation schemes operating in 2008	3	0	0	1	0	0	1	1	0
Total nr of hectares under irrigation in dry season 2008	674	0	0	159	0	0	197	318	0
Total funds spent in 2008 on construction of irrigation systems (\$)	n/a	0	0	n/a	0	0	n/a	n/a	n/a
Total funds spent in 2008 on rehabilitation/repair of irrigation systems (\$)	n/a	0	0	n/a	0	0	n/a	n/a	n/a
Total funds spent in 2008 on operation and maintenance (\$)	n/a	0	0	n/a	0	0	n/a	n/a	n/a

Note 1: Please note that these data are not necessarily complete or correct. The data are derived from government agencies at provincial and district level which used different recording systems, did not always have complete data or were, sometimes, less than willing to share their data.

Note 2: Please be aware that the data above are incomplete as these only reflect funds provided by the government, not the contributions by farmers or other parties.

10.3 Power Supply in 2008, by District

Electricity	KCH	Kampong Chhnang	Boribor	Roleap Ear	Teuk Phos	Kapong Leng	Choul Kiri	Kampong Tralach	Samaky Meanchey
Total number of electricity connections to households	5,790	3,236	330	802	509	0	0	913	0
Total number of electricity connections to agencies, companies, organizations	n/a	n/a	n/a	n/a	n/a	0	0	n/a	0
Total volume in KWh of electricity consumed last in 2008	3,204,489	2,869,179	43,300	104,884	60,526	0	0	126,600	0
Total amount collected from users for consumed electricity (\$)	1,173,336	929,614	30,626	89,535	49,454	0	0	74,107	0
Per capita electricity consumption in 2008 in Kwh	32	887	131	131	119	0	0	139	0

Note 1: Please note that these data are not necessarily complete or correct. The data are derived from government agencies at provincial and district level which used different recording systems, did not always have complete data or were, sometimes, less than willing to share their data.

Note 2: These data only record electricity provided by electricity companies and does not include homes powered by generators or batteries (for this information see Section B: General Profile, Part 1: General Information; table 1.3.1 and chart 1.3.4).

Note 3: In most provinces electricity is only provided through town-based networks

Note 4: Per capita consumption is calculated by dividing the total volume of electricity produced in 2008 by the number of people living in each district as per the 2008 census (for the provincial data it is calculated against the number of people living in the province)

11 Health Facilities

Please note that the Operational District (health) boundaries are different to the administrative district boundaries. Therefore the data provided here shows the facilities, staff, NGOs etc in each Operational District within the province NOT the administrative district.

Acronyms

Com Cov	Commune Covered	MW2	Secondary Midwives
CPA	Complementary Package of Activities	NU1	Primary Nurse
Dr	Doctor	NU2	Secondary Nurse
FDH	Former District Hospital	OD	Operational District
HC	Health Center	Others	Other Staff
HC (NB)	Health Center no building	PHD	Provincial Health Department
HP	Health Post	Pop 04-05	Population Covered 2004 or 2005
MA	Medical Assistant	RH	Referral Hospital
MPA	Minimum Package of Activities	Vil Cov	Village Covered
MW1	Primary Midwives	VIL-HC	Distance from Village to Health Center

11.1 Health Facilities in the Province, by Operational District

Kompong Chhang	OD	RH	HC	HP
Kampong Chhnang.	1	1	23	3
Kampong Tralach	1	1	11	
Total	2	2	34	3
Total	10	10	135	0

11.2 Health Facilities and Staff in the province, by Operational District

This table shows health facilities, staff and coverage of health facilities in each operational district.

No	Facility Name	Type	Class	Dr	Ma	Nu2	Nu1	Mw2	Mw1	Others	Com Cov	Vil Cov	Pop. 04-05
Kampong Chhnang.													
1	Akphivoadth	FDH	CPA+MPA	1	0	2	6	2	2	1	4	24	19,801
2	Cheung Kreav	HC	MPA	0	0	1	2	1	2	3	2	15	8,769
3	Chhnok Tru	HC	MPA	0	0	4	2	1	0	2	2	8	7,623
4	Chieb	HC	MPA	0	0	1	5	0	0	4	3	28	13,545
5	Chranouk	HC	MPA	0	0	0	5	0	2	0	2	6	8,358
6	Chrey Bak	FDH	MPA	0	0	1	6	1	2	1	2	19	11,620
7	Kampong Chhnang	HC	MPA	1	1	2	2	1	0	2	3	17	17,638
8	Kampong Hau	FDH	CPA+MPA	0	0	1	10	3	1	4	3	17	13,788
9	Krang Skear	HC	MPA	0	0	1	3	0	0	6	2	9	11,781

District Data Book 2009: Services and Organizations

No	Facility Name	Type	Class	Dr	Ma	Nu2	Nu1	Mw2	Mw1	Others	Com Cov	Vil Cov	Pop. 04-05
10	Krasang Doh Laeung	HP	Nil	0	0	0	1	0	0	0	1	1	-
11	Peam Chhkaok	HC	MPA	0	0	0	3	0	2	2	3	11	10,815
12	Pech Changvar	HP	Nil	0	0	0	1	0	0	0	1	1	-
13	Phsar	HC	MPA	0	0	1	2	2	1	5	4	20	14,717
14	Phsar Chhnang	HC	MPA	1	0	1	3	1	3	0	2	9	17,717
15	Pongro	HC	MPA	0	0	2	5	1	3	3	4	34	18,267
16	Ponley	FDH	CPA+MPA	1	2	0	10	2	3	4	3	24	17,825
17	Pralay Meas	HC	MPA	0	0	1	3	1	3	1	3	13	8,878
18	Preah Kosamak	HC	MPA	0	1	0	1	0	2	4	2	10	7,730
19	Prey Khmer	HC	MPA	0	0	0	4	2	4	1	3	21	18,358
20	Prey Kri	FDH	CPA+MPA	0	1	2	5	2	2	1	2	8	13,700
21	Srae Thmei	HC	MPA	0	0	3	3	0	2	1	1	12	9,729
22	Svay Chrum	HC	MPA	0	0	2	3	0	0	3	1	22	12,778
23	Svay Rumppear	HC	MPA	0	0	1	4	1	1	0	3	10	11,032
24	Tang Krasang	HC	MPA	0	0	1	1	1	0	4	2	12	8,461
Total:				4	5	27	90	22	35	52	58	351	282,930
Kampong Tralach													
1	Trapeang Chan	HC	MPA	0	0	1	0	1	1	8	3	16	10,880
2	Ampil Tuek	HC	MPA	0	0	0	2	0	3	4	1	11	28,532
3	Kampong Tralach Leu	HC	MPA	0	0	1	4	0	3	6	2	19	35,046
4	Koh Thkov	HC	MPA	1	0	1	2	0	1	4	1	10	17,562
5	Krang Lvea	HC	MPA	0	0	1	3	0	2	2	3	13	18,571
6	Longveaek	HC	MPA	1	0	0	4	0	2	4	5	18	23,935
7	Saeb	HC	MPA	0	1	1	3	1	0	3	3	18	42,024
8	Sala Lek Pram	HC	MPA	1	1	1	2	0	2	4	5	20	23,896
9	Svay	HC	MPA	1	0	1	1	0	4	1	3	25	148,349
10	Svay Chuk	HC	MPA	0	0	0	4	0	3	6	3	30	32,064
11	Ta Ches	HC	MPA	0	1	0	3	0	2	3	2	20	133,224
Total:				4	3	7	28	2	23	45	31	200	514,083
Total All				8	8	34	118	24	58	97	89	551	797,013

Source: MEDiCAM – Infrastructure - (http://www.medicam-cambodia.org/hsi/health_system/srch/index.asp?cboLcn=6&cmdSearch=Search&cboCHName=&cboType=)

11.3 Deliveries in 2007 in the Province, by Operational District

OD	Deliveries	Deliveries at home		Deliveries	Total deliveries	Total deliveries
	at HC	By Health Staff	ByTBAs	at RH	by Health Staff	by health staff and TBAs
Kampong Chhnang	1630	723	2367	667	3020	5387
Kampong Tralach	1283	157	1597	398	1838	3435
Boribo	1241	119	1103	0	1360	2463
<i>Sub-total</i>	<i>4154</i>	<i>999</i>	<i>5067</i>	<i>1065</i>	<i>6218</i>	<i>11285</i>

Source: MoH, Annual Statistics 2007

12 Education³

12.1 Schools, Classes, Students, Staff, for all levels, for 2007/2008 by District

District	Number of Schools	Disadv. Schools	Number of Classes	Classes in Pagoda	Enrollment		Repeaters		Teaching Staff		Non-Teaching Staff		Total Staff	
					Total	Girl	Total	Girl	Total	Female	Total	Female	Total	Female
Baribo	43	0	328	0	13,456	6,443	1,341	521	319	104	93	17	412	121
Chulkiri	27	0	202	4	8,553	3,931	1,424	581	130	37	28	5	158	42
Kampong Chhnang	16	0	290	0	12,819	6,051	551	187	434	206	109	48	543	254
Kampong Leng	37	0	262	3	10,897	5,168	1,498	655	193	65	43	13	236	78
Kampong Tralach	59	0	488	2	21,553	10,064	1,855	786	414	131	99	22	513	153
Rolea Pa-ir	93	0	584	0	22,058	10,693	1,709	675	652	309	142	45	794	354
Samaki Meanchey	40	0	371	3	17,684	8,523	1,854	747	295	62	69	7	364	69
Teuk Phos	51	0	366	2	15,036	7,363	829	357	294	80	60	13	354	93
Whole Province	366	0	2,891	14	122,056	58,236	11,061	4,509	2,731	994	643	170	3,374	1,164
- Urban Area	16	0	290	0	12,819	6,051	551	187	434	206	109	48	543	254
- Rural Area	350	0	2,601	14	109,237	52,185	10,510	4,322	2,297	788	534	122	2,831	910

12.2 Characteristics of Schools and School Principals for 2007/2008 by Commune

Commune	Number of Schools				2 - Shift	Floating	Schools	Attached	Schools Without			Characteristics of School Principals (Incharge)			
	Pre-Sch	Primary	College	Lycee	Schools	Schools	in Pagoda	Pre-Sch	Water Sup.	Latrine		Avg. Age	Avg. Service	U.Sec+ Ed.	Female
Chhean Laeung	0	3	0	0	3	0	0	0	1	1		53.0	26.3	0	1
Khna Chhmar	0	3	1	0	3	0	0	0	0			44.4	23.3	0	0
Krang Lvea	1	3	0	0	3	0	0	1	0	1		44.3	17.0	1	0
Peam	1	6	1	0	5	0	2	1	4	1		45.9	15.5	2	0
Sedthei	0	4	1	0	4	0	0	0	1			44.5	20.2	1	0
Svay	1	3	1	0	3	0	0	1	1	1		50.5	23.6	1	1
Svay Chuk	0	4	1	0	3	0	1	0	1	1		51.5	24.6	0	0
Tbaeng Khpos	0	2	1	0	2	0	0	0	1			46.8	20.0	1	0
Thlok Vien	0	2	0	1	3	0	0	0	0			56.2	25.3	0	0

³ All the data for section 12 comes from the Ministry of Education, Youth and Sport (MoEYS)

12.3 Enrolment by Level of Education, 2006/2007 by Commune

Commune	School	Pre school		Primary School		Lower Secondary School		Upper Secondary School		Enrolment	
		Total	Female	Total	Female	Total	Female	Total	Female	Total	Female
Chhean Laeung	3	0	0	875	430	0	0	0	0	875	430
Khna Chhmar	3	0	0	1183	584	0	0	0	0	1183	584
Krang Lvea	4	73	42	1866	907	0	0	0	0	1939	949
Peam	7	32	16	1840	863	0	0	0	0	1872	879
Sedthei	4	0	0	1809	915	0	0	0	0	1809	915
Svay	5	126	82	1723	789	564	265	0	0	2413	1136
Svay Chuk	5	0	0	2009	1028	850	397	0	0	2859	1425
Tbaeng Khpos	3	0	0	2013	950	273	118	0	0	2286	1068
Thlok Vien	3	0	0	1075	511	1328	559	324	100	2727	1170

12.4 Enrolment by Level of Education, 2007/2008 by Commune

Commune	School	Pre school		Primary School		Lower Secondary School		Upper Secondary School		Enrolment	
		Total	Female	Total	Female	Total	Female	Total	Female	Total	Female
Chhean Laeung	3	0	0	813	401	0	0	0		813	401
Khna Chhmar	4	0	0	1133	565	170	86	0		1303	651
Krang Lvea	4	152	70	1687	842	0	0	0		1839	912
Peam	8	27	11	1754	792	161	88	0		1942	891
Sedthei	5	0	0	1721	878	292	131	0		2013	1009
Svay	5	260	128	1503	734	541	257	0		2304	1119
Svay Chuk	5	0	0	1867	975	835	409	0		2702	1384
Tbaeng Khpos	3	0	0	1853	887	317	133	0		2170	1020
Thlok Vien	3	0	0	968	461	1185	521	445	154	2598	1136

12.5 Aspects of Enrolment for 2007/2008 by Commune

Commune	% Repeaters (Total)			% Over-age Enrollment (Total)			% Repeaters (Girl)			% Over-age Enrollment (Girl)		
	Primary	L.Sec.	U.Sec.	Primary	L.Sec.	U.Sec.	Primary	L.Sec.	U.Sec.	Primary	L.Sec.	U.Sec.
Chhean Laeung	14.3	0.0	0.0	19.9	0.0	0.0	11.0	0.0	0.0	19.0	0.0	0.0
Khna Chhmar	16.6	0.0	0.0	20.7	24.1	0.0	14.5	0.0	0.0	19.8	25.6	0.0
Krang Lvea	13.0	0.0	0.0	27.6	0.0	0.0	12.5	0.0	0.0	29.0	0.0	0.0
Peam	15.6	1.2	0.0	24.9	30.4	0.0	12.4	2.3	0.0	25.9	25.0	0.0
Sedthei	10.5	2.7	0.0	34.7	53.4	0.0	10.4	1.5	0.0	34.1	48.1	0.0
Svay	13.4	3.1	0.0	26.1	64.3	0.0	9.8	3.9	0.0	26.6	62.3	0.0
Svay Chuk	10.9	1.7	0.0	17.4	56.5	0.0	9.3	0.7	0.0	16.7	50.4	0.0
Tbaeng Khpos	11.9	2.5	0.0	25.5	55.8	0.0	9.0	2.3	0.0	24.1	48.1	0.0
Thlok Vien	15.8	3.6	1.1	23.0	55.4	47.6	11.5	1.7	1.3	24.3	47.6	39.0

12.6 School Buildings for all schools in the District for 2007/2008, by Commune

Commune	Total Number of		Concrete/Brick Structure		Wooden Structure		Bamboo Structure		New Buildings		Buildings Without Good		
	Buildings	Rooms	Buildings	Rooms	Buildings	Rooms	Buildings	Rooms	Repaired	Constructed	Floor	Roof	Wall
Chhean Laeung	4	14	3	13	0	0	1	1	1	1	1	0	1
Khna Chhmar	6	26	5	23	1	3	0	0	0	2	0	1	1
Krang Lvea	8	33	6	27	2	6	0	0	0	0	2	2	2
Peam	10	41	9	40	0	0	1	1	0	3	0	0	1
Sedthei	9	33	7	29	2	4	0	0	1	2	1	1	1
Svay	9	43	9	43	0	0	0	0	0	0	0	0	0
Svay Chuk	11	47	9	43	2	4	0	0	0	0	1	1	1
Tbaeng Khpos	10	42	9	38	1	4	0	0	0	0	0	0	0
Thlok Vien	12	41	11	40	1	1	0	0	0	0	1	1	1

12.7 Conditions of Classrooms and Existence of Separate School Office and Library, by Commune

Commune	Number of Class rooms	Number of Classrooms			Classrooms Without Good			Number of Furniture needed				Schools with Separate	
		in Pagoda	New Repaired	New Constr.	Floor	Roof	Wall	Desks	Chairs	Black-board	Teacher Table	Office	Library
Chhean Laeung	10	0	5	3	5	0	1	2	1	0	1	0	0
Khna Chhmar	21	0	0	10	0	3	3	24	24	0	0	2	1
Krang Lvea	23	0	0	0	6	6	6	0	0	0	0	1	2
Peam	29	0	0	9	0	0	2	0	10	0	0	3	3
Sedthei	24	0	3	10	3	3	1	0	0	0	3	1	2
Svay	31	3	0	0	0	0	0	25	0	0	0	4	2
Svay Chuk	38	0	0	0	3	3	3	0	20	0	3	5	1
Tbaeng Khpos	24	0	0	0	0	0	0	0	0	1	2	2	1
Thlok Vien	31	0	0	0	1	1	1	0	0	0	0	3	3

12.8 Community Participation and Financing across all schools in the District for 2007/2008 by Commune

Commune	Parent Association				Comm. Teachers	Teaching Monks	PAP Fund (Riel)		Number of Schools Obtaining Funds from				
	Exists	Held Meet	Total	Female			per Student	per School	Sch. Income	Community	Gvt. For building	Abroad	IOs/NGOs
Chhean Laeung	3	3	2	0	0	0	8,285	2,416,333	0	0	0	0	0
Khna Chhmar	3	3	5	1	0	0	8,795	3,468,333	0	0	1	0	0
Krang Lvea	3	3	5	1	0	0	8,394	4,768,000	0	0	0	0	0
Peam	7	6	4	1	0	0	76,631	20,143,089	0	0	0	0	0
Sedthei	4	4	6	1	0	0	6,056	2,738,650	0	1	0	0	0
Svay	4	4	9	1	0	0	10,707	6,121,750	0	0	0	0	0
Svay Chuk	5	5	5	1	0	0	10,470	5,986,600	0	0	0	0	0
Tbaeng Khpos	3	3	8	1	0	0	9,975	6,753,000	0	0	0	0	0
Thlok Vien	3	3	7	1	0	0	8,604	4,624,500	0	0	0	0	0

12.9 Percentage Student Flow Rates and Graduation by level 2006/2007, by Commune

Commune	Primary Level (Grades 1-6)			Lower Secondary Level (Grades 7-9)			Upper Secondary Level (Grades 10-12)			Successful Candidates		
	Promotion	Repetition	Dropout	Promotion	Repetition	Dropout	Promotion	Repetition	Dropout	Grade 6	Grade 9	Grade 12
Chhean Laeung	80.1	13.3	6.6	0.0	0.0	0.0	0.0	0.0	0.0	97	0	0
Khna Chhmar	81.4	15.9	2.7	0.0	0.0	0.0	0.0	0.0	0.0	171	0	0
Krang Lvea	78.2	11.8	10.0	0.0	0.0	0.0	0.0	0.0	0.0	205	0	0
Peam	82.4	14.8	2.7	0.0	0.0	0.0	0.0	0.0	0.0	279	0	0
Sedthei	81.0	10.0	9.0	0.0	0.0	0.0	0.0	0.0	0.0	192	0	0
Svay	77.3	11.7	11.0	68.3	3.0	28.7	0.0	0.0	0.0	223	71	0
Svay Chuk	83.7	10.2	6.1	65.3	1.6	33.1	0.0	0.0	0.0	259	62	0
Tbaeng Khpos	77.4	11.0	11.6	61.2	2.9	35.9	0.0	0.0	0.0	197	0	0
Thlok Vien	80.1	14.2	5.7	76.7	3.2	20.0	79.3	1.5	19.1	161	226	32

13 Staff and Resources at the District

This chapter presents data from the District Information System, collected around the middle of 2009 unless otherwise specified.

13.1 District Councilors elected in 2009

Name	Sex	Year of Birth	Function	Phone
កៅ ហុន	M	15-10-1953	Chairperson of The Council	092-925 348
ឌិន ធី	M	11-09-1950	Councillor	012-621 041
ឌី សៀង	M	10-12-1953	Councillor	092-403 812
យឹម ឡើង	M	11-03-1949	Councillor	012-554 851
នី សៀន	M	15-04-1953	Councillor	012-688 386
ស៊ូ សំរេច	M	02-11-1952	Councillor	092-399 707
ម៉ៅ ពៅ	M	03-04-1954	Councillor	092-413 984
សែ កែម	F	16-07-1958	Councillor	017-436 239
ឡាច សារុន	M	09-03-1953	Councillor	012-207 165
ស៊ឹម ធី	M	01-01-1963	Councillor	012-785 374
ចិន វិចិត្រ	M	10-08-1952	Councillor	017-805 447
ហែម ក្រាវែន	M	07-12-1946	Councillor	085-715 108
ប៉ាត វ៉ានា	M	21-06-1973	Councillor	092-291 566
ឆាំ សារ៉ុម	F	17-08-1964	Councillor	092-527 231
សៅ ហន	M	15-01-1966	Councillor	092-957 309
ឈន ឈឿន	M	05-08-1966	Councillor	092-698 859
ជៀប ប៊ុនធឿន	M	06-07-1948	Councillor	012-457 309

13.2 Committees of the Council

Please note at the time of producing the district data books the composition of the committees was not known for all district councils and therefore data were not available for 13.2.1, 13.2.2, 13.2.3.

13.2.1 Technical Facilitation Committee

13.2.2 Women's and Children's Affairs Committee

13.2.3 Procurement Committee

13.3 Board of Governors

Name	Sex	DoB	Function	Salary Level	Body	Phone
មូ សំបុន	M	18-04-1953	District Governor	ក២.៣	High Ranking Civil Servant	012-991 563
ចាន់ ឿន	M	05-03-1955	District Deputy Governor	ខ១.១	Medium Civil Servant	012-790 065
អោម សំអឿន	M	27-12-1954	District Deputy Governor	ខ១.១	Medium Civil Servant	012-257 918
ជា ម៉ៅ	F	17-05-1968	District Deputy Governor	គ១.៥	Secretary	012-226 413
ក្រុង ម៉ារ៉ា	M	09-03-1975	District Deputy Governor	ខ៣.១០	Medium Civil Servant	016-786 226

13.4 Offices under Sala Krong, Sala Srok and Sala Khan

Office Name	Chief		Deputy Chief		No. of Staff				Office Area (m2)	No of vehicle (public or program)	
					State		Contract				
	M	F	M	F	M	F	M	F		vehicle	moto
District/ Khan Cabinet	1	0	1	0	11	1	0	0	70	0	0
Adminnistration Office	1	0	1	0	0	2	0	0	0	0	0
Economy Office	1	0	1	0	1	0	0	0	0	0	0
Social Affair Office	0	1	1	0	1	0	0	0	0	0	0

13.5 Municipality/District/Khan line offices

Office Name	Chief		Deputy Chief		No. of Staff				Office Area (m2)	No of vehicle (public or program)	
					State		Contract				
	M	F	M	F	M	F	M	F		vehicle	moto
District/ Khan Police Headquarter	1	0	4	0	102	1	0	0	60	1	12
District/ Khan Military Police Headquarter	1	0	2	0	1	0	0	0	24	0	0
District/ Khan Military Subregion	1	0	2	0	15	0	0	0	60	0	0
Planning Office	1	0	1	0	0	0	0	0	Borrow	0	0
Women Affairs Office	0	1	0	0	0	0	0	1	Borrow	0	0
Environment Office	1	0	0	0	0	0	0	0	Borrow	0	0
Education Office	1	0	1	0	4	2	0	0	54	0	0
Agriculture Office	1	0	2	0	5	0	0	0	63	0	1
Social Affairs Office	1	0	1	0	2	0	0	0	Borrow	0	0
Cult and Religion Office	1	0	0	0	0	0	0	0	Borrow	0	0
Finance Office	1	0	1	0	0	0	0	0	Borrow	0	0
Information Office	1	0	1	0	0	0	0	0	Borrow	0	0
Public Work Office	0	0	1	0	0	0	0	0	Borrow	0	0
Post Office	1	0	0	0	0	0	0	0	Borrow	0	0
Lan Management Office	1	0	1	0	3	0	0	0	35	0	0
Water Resources Office	0	0	0	0	2	0	0	0	Borrow	0	0
Custom and Levy Office	1	0	0	0	0	0	0	0	Borrow	0	0

13.6 Properties and Equipment of District Administration

13.6.1 Buildings

Description	Unit	Number	Remark
Office building type			
- Concrete	building	0	
- Wood	building	1	
- Mixed	building	1	
Total floor space	m2		
- Concrete	m2	0	
- Wood	m2	245.3	
- Mixed	m2	70	
Building condition			
- Concrete	%	0	
- Wood	%	10	
- Mixed	%	10	
Office reserved land area	m2	0	
Total office land area	m2	12,920	

13.6.2 Means of Transport available at the District Administration

Description	Unit	Number	Remark
Vehicle (type, size and condition)	Vehicle	0	
Motorcycle (type, size and condition)	Motor	0	

13.6.3 Equipment in District Offices

Description	Unit	Number	Remark
Generator	per set	0	
Photocopy machine at the office	per set	0	
Private photocopy machine at the district town	place	0	
Telephone network (mobile line service)	network	4	012, 016, 011, 097
Telephone network (land line service)	network	0	
Fax (include Fax number)	per set	0	
Computer	per set	1	
Printer	per set	0	
Scanner	Per set	0	
Number of computers those can access Internet and email services in the municipality/ district/khan office (including the technical line offices (please provide the email address)	set	0	
Typewriters (including the technical line offices)	per set	1	
Staff of Municipality/district/khan office can use computer	person	1	

13.6.4 Equipment and facilities at the District Town

Description	Unit	Number	Remark
Availability of electricity at noon	Nr Hours	0	
Private internet and email services in the municipality/ district/khan town.	place	0	

13.7 Registered Revenue of the District Administration in 2008⁴

Sources of Revenue	Revenue Collecting Agency	Estimated annual revenue (In Riels)
Slaughter Hosue	Provincial Department of Agriculture	2,240,000
Craft	Provincial Department of Agriculture	54,000
Patent	District/ Khan Taxation Unit	1,000,000
Transportation Tax	District/ Khan Taxation Unit	91,000,000
Tamp Tax	District/ Khan Taxation Unit	300,000
Turn Over Tax	District/ Khan Taxation Unit	1,500,000
Fine	District/ Khan Taxation Unit	800,000
Land (Tax, Certification and Tenure)	Provincial Department of Land Management	1,200,000
Tax imposed on merchants	Salasrok	1,200,000
Non-fiscal revenue	District/ Khan Taxation Unit	300,000

13.8 Services in the District

13.8.1 Public Sector Services

Type of Infrastructure/services	Unit	Number	
		Public	Private
Schools			
Pre-school	room	7	0
Primary School	room	262	0
Secondary school	room	46	0
High School	room	47	0
University	room		
Health			
Health post	place	0	1
Health center	place	0	4
Referral Hospital	bed		

13.9 Civil Society Organizations active in the District

13.9.1 NGOs, Associations, Programs and Projects

Name	Abbr.	Sector Activities	No. of Target Communes	No. of Target Villages	Office in District
NA	ACLEDA	ឥណទាន	0	0	No
NA	WFP	ស្បៀង-វិស័យអប់រំ	7	0	No
NA	ADHOC	សិទ្ធិមនុស្ស	0	0	No
NA	NA	បរិស្ថាន	0	0	No
NA	RAC	សុខភាព	9	85	No
NA	EDF-CAM	អប់រំ	9	0	No
NA	NA	ឥណទាន	0	0	No

⁴ Please note that the data in this table are at best estimates. If the table appears blank it does not mean there is no revenue, just that the data have not been recorded/entered.

Name	Abbr.	Sector Activities	No. of Target Communes	No. of Target Villages	Office in District
NA	LMDS	ជួយជនពិការ	4	33	No
NA	LICADHO	សិទ្ធិមនុស្ស	0	0	No
NA	LWF	អភិវឌ្ឍន៍ចំរុះ	6	55	Yes
NA	WVC	អភិវឌ្ឍន៍ចំរុះ	4	31	Yes
NA	API	គំរោងបើកចំហ៍ព័ត៌មាន	1	9	No

13.9.2 Political Parties active in the Municipality, District and Khan

Name	Abbr.	Office in District
Cambodian People Party	CPP	Yes
FUNCINPEC Party	FUNCINPEC	Yes
Human Rights Party	HRP	Yes
NRP	NRP	Yes
SAM RAINSY Party	Sam Rainsy Party	Yes

13.10 Private Sector Organizations

13.10.1 Registered Companies in 2008, by District

On private sector at commune and/or district level	KCH	Kampong Chhnang	Boribor	Roleap Ear	Teuk Phos	Kapong Leng	Choul Kiri	Kampong Tralach	Samaky Meanchey
Businesses and Companies									
Number of registered agricultural enterprises (except family farms)	1	0	0	1	0	0	0	0	0
Number of registered shops, restaurants, transporters and other services	1,398	863	150	169	78	0	0	138	0
Number of manufacturing companies	9	2	0	3	0	0	0	3	1
Number of registered forestry enterprises	34	0	3	16	3	5	0	6	1
Number of registered mining companies (Rock)	3	0	0	2	0	0	1	0	0
Number of financial institutions	n/a	n/a	n/a	n/a	n/a	n/a	n/a	n/a	n/a
Number of other commercial institutions	6	1	0	1	0	0	0	3	1
Estimated number of informal enterprises (not registered)	n/a	n/a	n/a	n/a	n/a	n/a	n/a	n/a	n/a
Employment									
Number of people employed in 2008 by companies or any other enterprises	8,195	1,448	558	2,032	425	178	107	2,039	1,408
Investment									
Amount invested in 2008 by private sector (\$)	n/a	n/a	n/a	n/a	n/a	n/a	n/a	n/a	n/a
Markets									
Number of markets, operating at least weekly	9	2	3	0	1	1	0	2	0

Note: These data are not comprehensive as different companies and business are registered with different departments and not all departments were able or willing to provide detailed information. The number of informal enterprises reflects a rough estimate, made at provincial level and could not be verified.

Source: Unofficially collected at Provincial Level

13.10.2 Farmers in 2008, by District

Credit	KCH	Kampong Chhnang	Boribor	Roleap Ear	Teuk Phos	Kapong Leng	Choul Kiri	Kampong Tralach	Samaky Meanchey
Volume of credit provided to farmers in 2008 (\$)	n/a	n/a	n/a	n/a	n/a	n/a	n/a	n/a	n/a
Number of farmers receiving credit in 2008	n/a	n/a	n/a	n/a	n/a	n/a	n/a	n/a	n/a
Volume of credit provided to companies in 2008 (\$)	n/a	n/a	n/a	n/a	n/a	n/a	n/a	n/a	n/a

Note: Please note that these data are not necessarily complete or correct. The data are derived from government agencies at provincial and district level which used different recording systems, did not always have complete data or were, sometimes, less than willing to share their data.

Source: Unofficially collected at Provincial Level

SECTION E: POVERTY DATA

14 Data on Poverty

14.1 Predicted Poverty Rates for 2009, by commune

The **Predicted Family Poverty Rate** is based on a statistical model (robust multilevel mixed effect regression) at village level developed by the NCDD M&E Unit and uses CDB data for making an estimate of the predicted poverty rate (this is: *the portion of total families in the district or commune who are expected to be poor*) for the following year using current year data.

The basis for this predicted poverty rate also uses IDPoor (a project of the Ministry of Planning with technical assistance provided by GTZ) data

Commune	2004	2009
Chhean Laeung	44.60%	35.90%
Khna Chhmar	38.70%	33.80%
Krang Lvea	39.40%	35.10%
Peam	39.50%	32.10%
Sedthei	40.60%	32%
Svay	40.40%	32.40%
Svay Chuk	40.40%	34%
Tbaeng Khpos	41.50%	37%
Thlok Vien	39%	33.80%

14.2 Poverty data from survey

14.2.1 Identification of Poor Households Program (IDPoor)

The Ministry of Planning IDPoor Program has developed standardized Procedures for Identification of Poor Households in rural areas. These Procedures are implemented using a participatory and consultative process by sub-national government structures and community representatives.

The IDPoor Program is managed by the Ministry of Planning (MOP), in cooperation with the Ministry of Interior's Department of Local Administration (DOLA). The program is supported by the Federal Republic of Germany, with technical assistance provided by German Technical Cooperation (GTZ). In 2009, AusAID also provided funding support to the Program.

Objective

The IDPoor Program aims to implement the Procedures for Identification of Poor Households in rural areas as widely as possible, in order to provide data on the level of poverty of areas and households that can be used by a large range of institutions and organizations for targeting services and development assistance to poor areas and poor households.

Coverage: During 2007, 2008 and 2009 the IDPoor Procedures have been implemented in 18 provinces (with partial or complete coverage), covering a total of around 7000 rural villages. The MOP and a number of NGO partners who are Health Equity Fund Operators have collaborated in collecting this data from different areas.

Categorization: Identified poor households are classified under two poverty categories: Poor Level 1 (very poor), and Poor Level 2 (poor). Households are classified based on data collected using a standard questionnaire, together with consideration by villagers of these households' special circumstances.

Further information: Please go to the IDPoor Program webpage at www.mop.gov.kh/Projects/IDPoor/tabid/154/Default.aspx

This District has not yet been covered by IDPoor